

STATE OF OREGON }
COUNTY OF DOUGLAS } ss.

I, J. M. HARTONG, BEING FIRST DULY SWORN, SAY:
THAT I AM A CIVIL ENGINEER BY PROFESSION; THAT I HAVE CORRECTLY SURVEYED
AND MARKED WITH PROPER MONUMENTS THE LAND REPRESENTED ON THE WITHIN
PLAT; THAT I PLANTED A PROPER MONUMENT, TO WIT, A GALVANIZED IRON PIPE
THREE FEET IN LENGTH AND TWO INCHES IN DIAMETER AT THE INITIAL POINT OF
SAID SURVEY, SAID INITIAL POINT BEING ON THE NORTH LINE OF SEC. 25 IN T. 27 S., R. 6 W.
W.M. IN OREGON, 2848 FT. EAST OF THE N. W. CORNER OF SAID SECTION; THAT I PLANTED
SAID PIPE SIX INCHES BELOW THE SURFACE OF THE GROUND; THAT THE LAND SO
PLATTED IS PARTICULARLY BOUNDED AND DESCRIBED AS FOLLOWS, TO-WIT,
BEGINNING AT A POINT ON THE NORTH LINE OF SEC. 25 T. 27 S. R. 6 W. W.M. IN
OREGON, 2898 FT. EAST OF THE N. W. CORNER OF SAID SECTION; THENCE WEST 1578.0 FT.
THENCE NORTH 1288.0 FT.; THENCE WEST 906.0 FT.; THENCE NORTH 2100 FT. TO THE SOUTH
LINE OF THE COOS BAY ROAD, THENCE WESTERLY ALONG SAID LINE 8127.5 FT.; THENCE
SOUTH 200 FT.; THENCE EAST 2852 FT. TO THE CORNER OF SEC'S 22, 23, 26 AND 27
IN SAID TOWNSHIP AND RANGE; THENCE SOUTH 7977 FT.; THENCE EAST 3923.0 FT.;
THENCE NORTH 496 FT. TO THE WEST BANK OF THE SOUTH UMPQUA RIVER, THENCE
NORTH ALONG SAID BANK OF SAID RIVER 10361.5 FT. TO POINT OF BEGINNING.
CONTAINING 1600 ACRES MORE OR LESS.

(SGD.) J. M. HARTONG

SUBSCRIBED AND SWORN TO BEFORE ME THIS 4TH DAY OF SEPT. 1909.

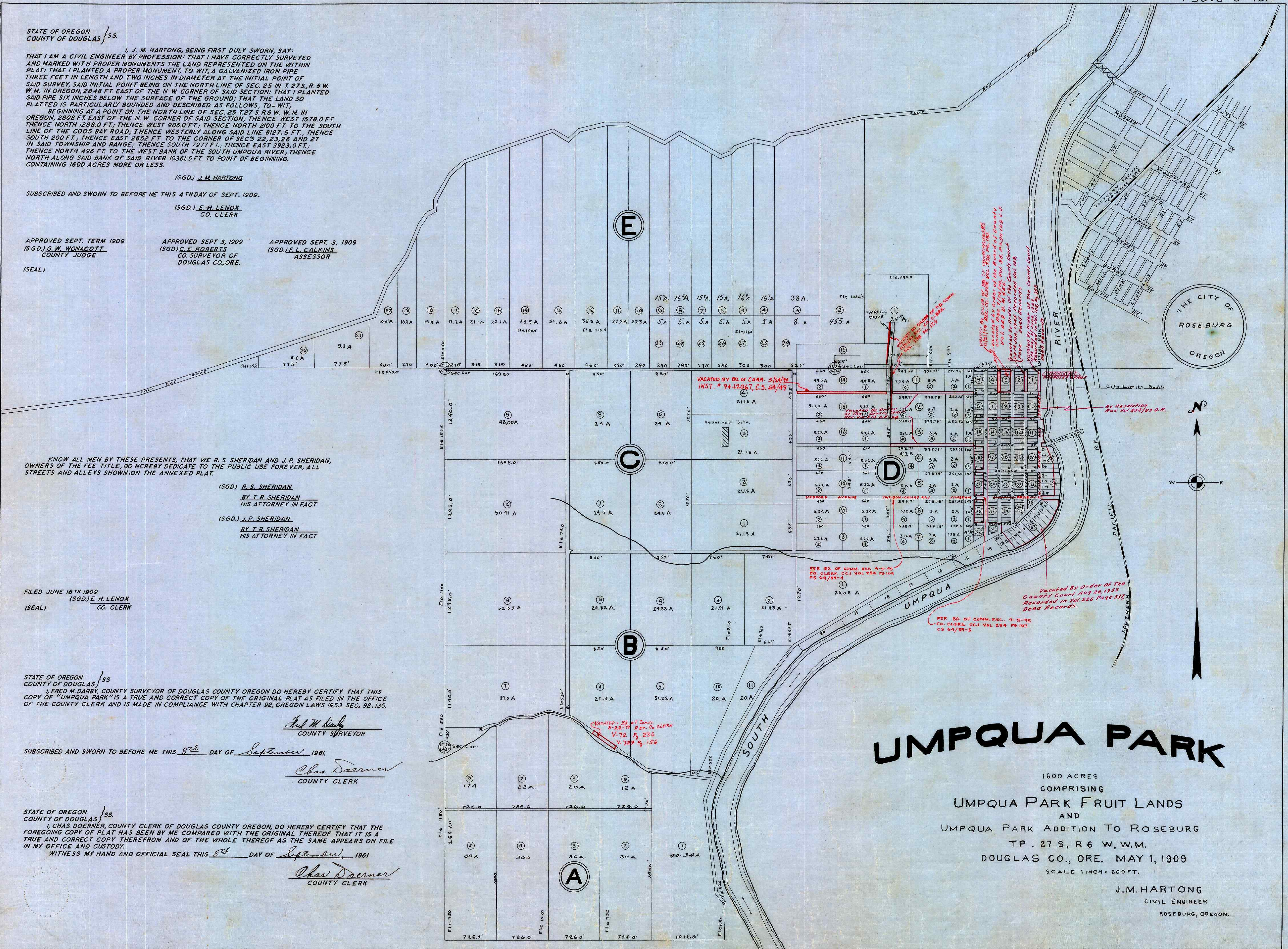
(SGD.) E. H. LENOX
CO. CLERK

APPROVED SEPT. TERM 1909
(SGD.) G. W. WOHACOTT
COUNTY JUDGE

APPROVED SEPT. 3, 1909
(SGD.) C. E. ROBERTS
CO. SURVEYOR OF
DOUGLAS CO., ORE.

APPROVED SEPT. 3, 1909
(SGD.) F. L. CALKINS
ASSESSOR

(SEAL)



KNOW ALL MEN BY THESE PRESENTS, THAT WE R. S. SHERIDAN AND J. P. SHERIDAN,
OWNERS OF THE FEE TITLE, DO HEREBY DEDICATE TO THE PUBLIC USE FOREVER, ALL
STREETS AND ALLEYS SHOWN ON THE ANNEXED PLAT.

(SGD.) R. S. SHERIDAN
BY T. R. SHERIDAN
HIS ATTORNEY IN FACT

(SGD.) J. P. SHERIDAN
BY T. R. SHERIDAN
HIS ATTORNEY IN FACT

FILED JUNE 18TH 1909
(SGD.) E. H. LENOX
CO. CLERK

STATE OF OREGON }
COUNTY OF DOUGLAS } ss.

I, FRED M. DARBY, COUNTY SURVEYOR OF DOUGLAS COUNTY OREGON DO HEREBY CERTIFY THAT THIS
COPY OF "UMPQUA PARK" IS A TRUE AND CORRECT COPY OF THE ORIGINAL PLAT AS FILED IN THE OFFICE
OF THE COUNTY CLERK AND IS MADE IN COMPLIANCE WITH CHAPTER 92, OREGON LAWS 1953 SEC. 92.130.

Fred M. Darby
COUNTY SURVEYOR

SUBSCRIBED AND SWORN TO BEFORE ME THIS 8th DAY OF September, 1961.

Chas Doerner
COUNTY CLERK

STATE OF OREGON }
COUNTY OF DOUGLAS } ss.

I, CHAS DOERNER, COUNTY CLERK OF DOUGLAS COUNTY OREGON, DO HEREBY CERTIFY THAT THE
FOREGOING COPY OF PLAT HAS BEEN BY ME COMPARED WITH THE ORIGINAL THEREOF THAT IT IS A
TRUE AND CORRECT COPY THEREFROM AND OF THE WHOLE THEREOF AS THE SAME APPEARS ON FILE
IN MY OFFICE AND CUSTODY.

WITNESS MY HAND AND OFFICIAL SEAL THIS 8th DAY OF September, 1961

Chas Doerner
COUNTY CLERK

UMPQUA PARK

1600 ACRES
COMPRISING
UMPQUA PARK FRUIT LANDS
AND
UMPQUA PARK ADDITION TO ROSEBURG
TP. 27 S., R. 6 W., W.M.
DOUGLAS CO., ORE. MAY 1, 1909
SCALE 1 INCH = 600 FT.

J. M. HARTONG
CIVIL ENGINEER
ROSEBURG, OREGON.