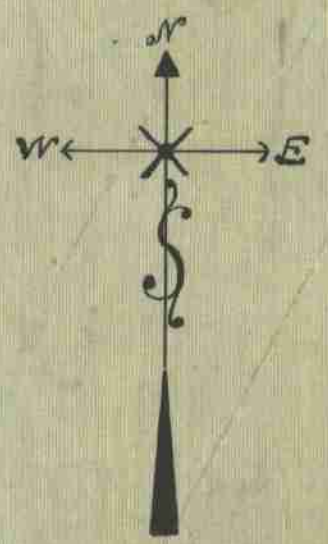
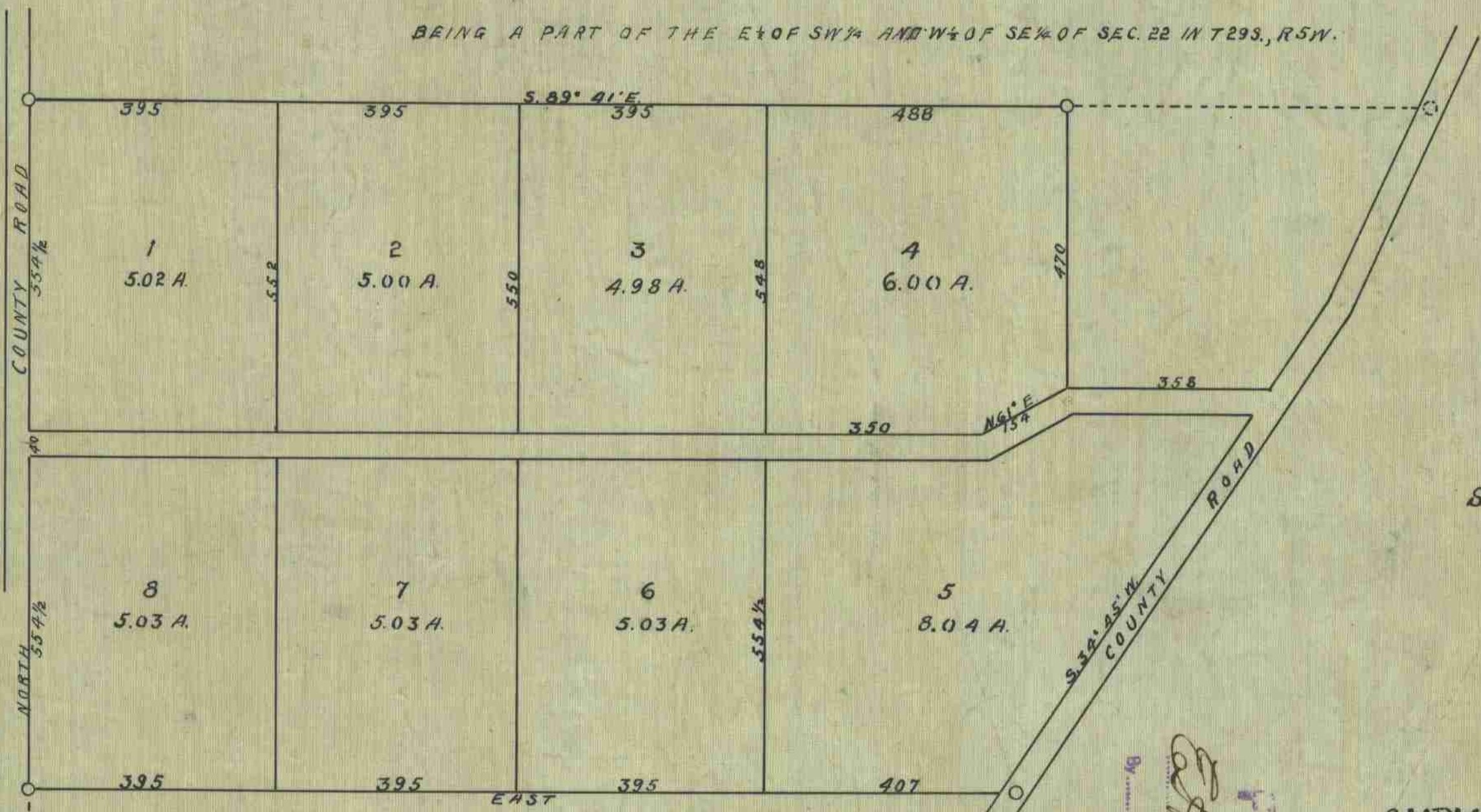


MYRTLE FRUIT LANDS

DOUGLAS COUNTY OREGON

BEING A PART OF THE E½ OF SW¼ AND W½ OF SE¼ OF SEC. 22 IN T29S., R5W.



Scale - 200' to 1 inch

DESCRIPTION:

BEGINNING AT A POINT 19.62 CHS. AND 16.42 CHS. N. OF THE SW. COR. OF SEC. 22 IN T. 29S., R. 5W. THENCE NORTH 1109 FT., THENCE S89°41'E 1673 FT. THENCE SOUTH 470 FT., THENCE EAST 358 FT., THENCE S34°45'N 782 FT. THENCE W 1592 FT. TO PLACE OF BEGINNING.

By *[Signature]*
 DEPUTY CLERK
 1909

SURVEYED and PLATTED
 BY
ROBERTS AND GERMOND
 ENGINEERS
 1909

5811
 1541
 11092

21 22
 SEC. COR. 19.62 CHS. WEST.
 23 27
 T29S., R5W.
 15-2