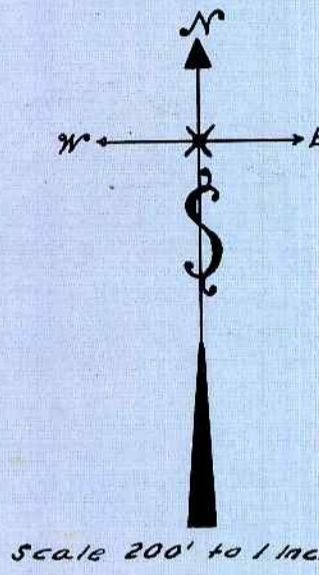
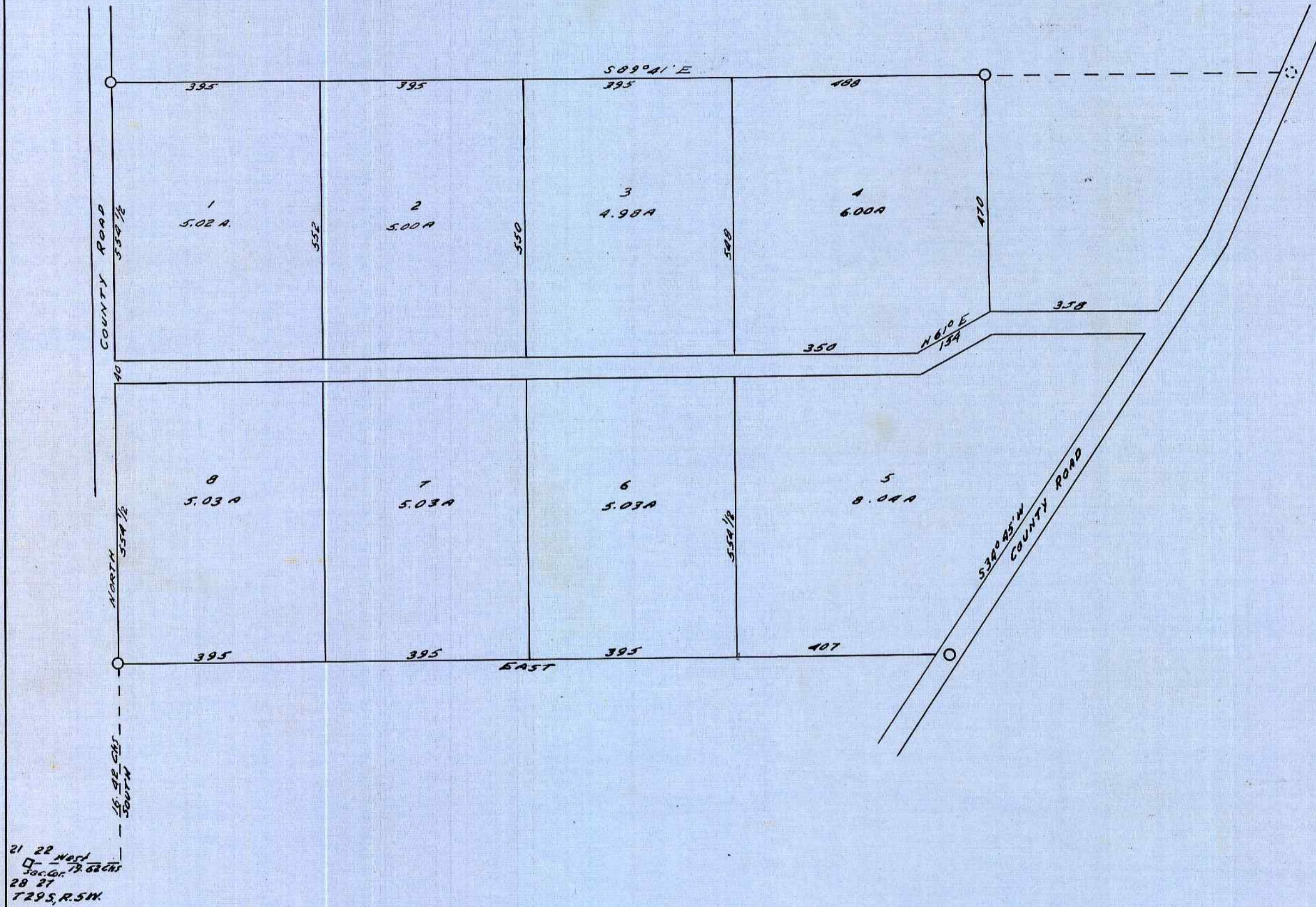


MYRTLE FRUIT LANDS DOUGLAS COUNTY OREGON

BEING A PART OF THE E 1/2 OF S.W. 1/4 AND W 1/2 OF S.E. 1/4 OF SEC. 22 IN T. 29 S., R. 5 W.
SURVEYED AND PLATTED BY ROBERTS AND GERMOND, ENGINEERS 1909

DESCRIPTION
BEGINNING AT A POINT 19.62 CHS. E. AND 16.42 CHS. N. OF THE SW CORNER OF SEC. 22 IN T. 29 S., R. 5 W.
THENCE NORTH 1109 FT., THENCE S 89° 41' E 167.3 FT. THENCE SOUTH 470 FT., THENCE EAST 358 FT.
THENCE S. 34° 45' W. 782 FT., THENCE W. 1592 FT. TO PLACE OF BEGINNING.

FILED APRIL 29, 1909
(SGD) E. H. LENOX, COUNTY CLERK



STATE OF OREGON } ss
COUNTY OF DOUGLAS }
I, FRED M. DARBY, COUNTY SURVEYOR OF DOUGLAS COUNTY OREGON, DO HEREBY CERTIFY THAT THIS COPY OF "MYRTLE FRUIT LANDS" IS A TRUE AND CORRECT COPY OF THE ORIGINAL PLAT AS FILED IN THE OFFICE OF THE COUNTY CLERK, AND IS MADE IN COMPLIANCE WITH CHAPTER 92 OREGON LAWS 1953 SEC. 92-130

Fred M. Darby
COUNTY SURVEYOR

SUBSCRIBED AND SWORN TO BEFORE ME THIS 26th DAY OF March, 1958.

Chas Doerner
COUNTY CLERK

STATE OF OREGON } ss
COUNTY OF DOUGLAS }
I, CHAS. DOERNER, COUNTY CLERK OF DOUGLAS COUNTY OREGON, DO HEREBY CERTIFY THAT THE FORE - GOING COPY OF PLAT HAS BEEN BY ME COMPARED WITH THE ORIGINAL THEREOF THAT IT IS A TRUE AND CORRECT COPY THEREFROM AND OF THE WHOLE THEREOF AS THE SAME APPEARS ON FILE IN MY OFFICE AND CUSTODY. WITNESS MY HAND AND OFFICIAL SEAL THIS 26th DAY OF March, 1958.

Chas Doerner
COUNTY CLERK

21 22 Mar
28 27
T. 29 S., R. 5 W.