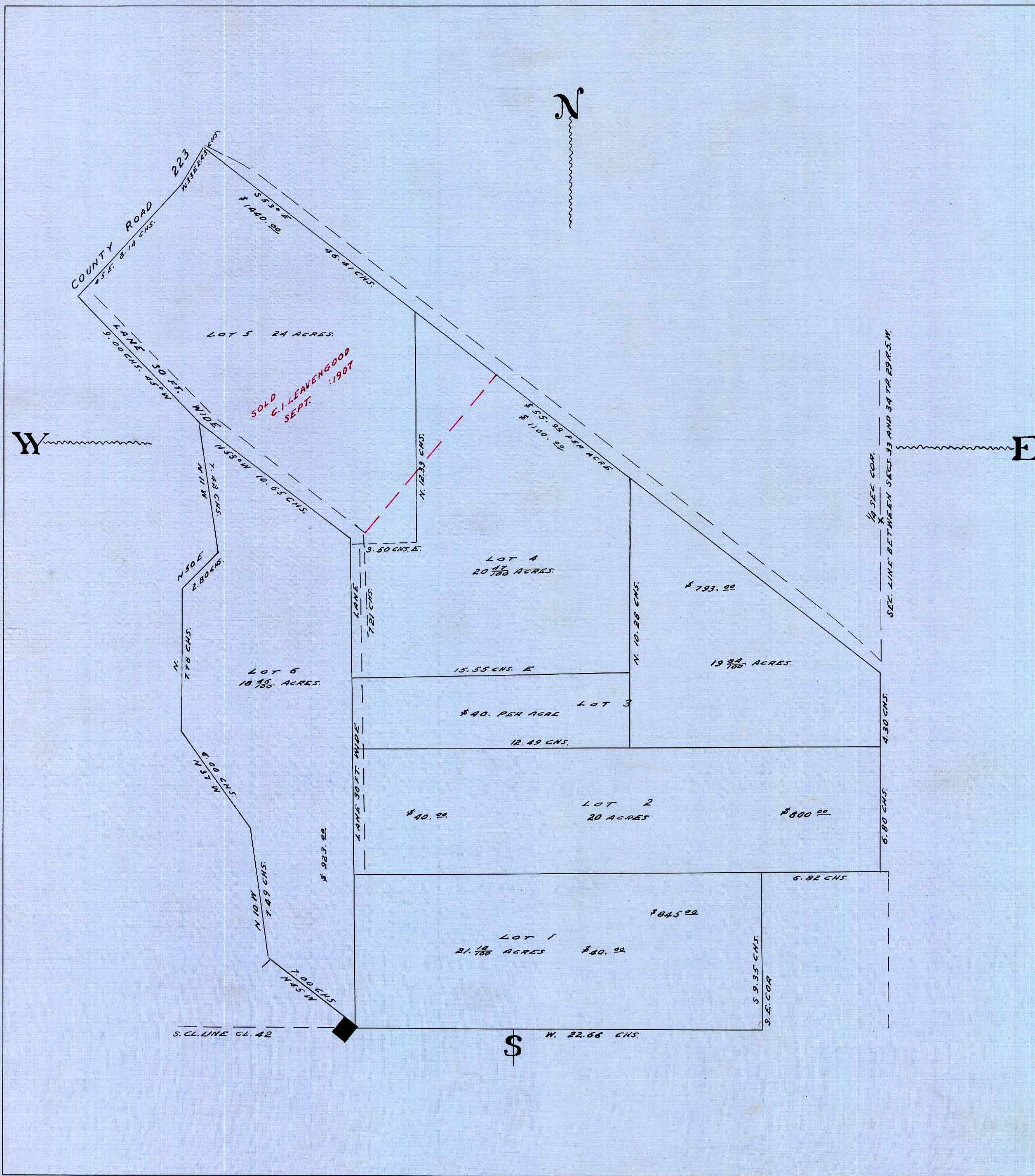


SUBDIVISION OF 122.36 ACRES

IN
~~SEC. 30~~ ^{SEC. 33 4/27/82} T. 29 S. OF R. 5 W.
d.h.

NOTE: THE DISTANCE GIVEN FROM E. LINE OF CL. 42 EAST TO SECTION LINE ON GOVERNMENT PLATS IS NOT CORRECT, THE TRUE DISTANCE IS GIVEN BELOW.

FILED NOV. 1, RECORDED NOV. 14, 1907
 (S.G.D.) Z. N. AGEE, COUNTY CLERK



STATE OF OREGON }
 COUNTY OF DOUGLAS } ss
 I, FRED M. DARBY, COUNTY SURVEYOR OF DOUGLAS COUNTY OREGON DO HEREBY CERTIFY THAT THIS COPY OF "SUBDIVISION OF 122.36 ACRES IN SEC. 30 T. 29 S. OF R. 5 W." IS A TRUE AND CORRECT COPY OF THE ORIGINAL PLAT AS FILED IN THE OFFICE OF THE COUNTY CLERK AND IS MADE IN COMPLIANCE WITH CHAPTER 92 OREGON LAWS 1953 SEC. 92 -130.

Fred M. Darby
 COUNTY SURVEYOR

SUBSCRIBED AND SWORN TO BEFORE ME THIS 26th DAY OF March, 1958

Chas. Doerner
 COUNTY CLERK

STATE OF OREGON }
 COUNTY OF DOUGLAS } ss
 I, CHAS. DOERNER, COUNTY CLERK OF DOUGLAS COUNTY OREGON, DO HEREBY CERTIFY THAT THE FOREGOING COPY OF PLAT HAS BEEN BY ME COMPARED WITH THE ORIGINAL THEREOF THAT IT IS A TRUE AND CORRECT COPY THEREFROM AND OF THE WHOLE THEREOF AS THE SAME APPEARS ON FILE IN MY OFFICE AND CUSTODY. WITNESS MY HAND AND OFFICIAL SEAL THIS 26th DAY OF March, 1958.

Chas. Doerner
 COUNTY CLERK