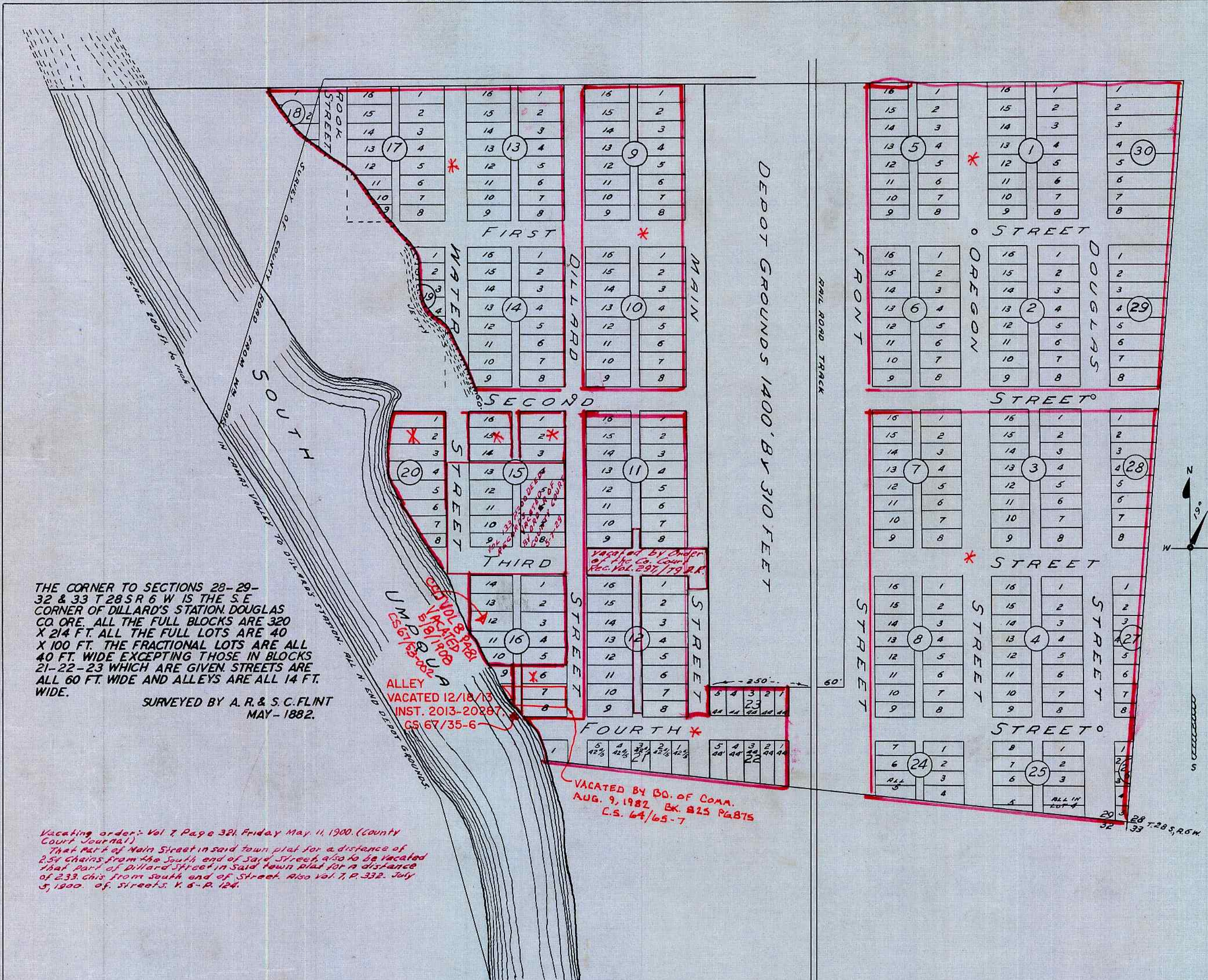


DILLARD'S STATION

RECORDED MAY 12, 1882
(SGD) T. R. SHERIDAN, CO. CLERK
BY W. T. WRIGHT, DEPUTY

FOR ORIGINAL PLATTING SEE
VOL. 13, P. 27 DEED RECORDS

* C.C.J. VOL. 6 PG 124-125 FILED MARCH 1894 AND
C.S. FILE 67/53-001 7-27-2022
SEE FILE FOR DESCRIPTION.



THE CORNER TO SECTIONS 28-29-32 & 33 T 28 S R 6 W IS THE S.E. CORNER OF DILLARD'S STATION DOUGLAS CO. ORE. ALL THE FULL BLOCKS ARE 320 X 214 FT. ALL THE FULL LOTS ARE 40 X 100 FT. THE FRACTIONAL LOTS ARE ALL 40 FT. WIDE EXCEPTING THOSE IN BLOCKS 21-22-23 WHICH ARE GIVEN. STREETS ARE ALL 60 FT. WIDE AND ALLEYS ARE ALL 14 FT. WIDE.

SURVEYED BY A. R. & S. C. FLINT
MAY - 1882.

ALLEY
VACATED 12/18/73
INST. 2013-20287
CS 67/35-6

VACATED BY BO. OF COM.
AUG. 9, 1982 BK. 825 P. 875
C.S. 64/65-7

Vacating order: Vol 7 Page 321 Friday May 11, 1900. (County Court Journal)
That part of Main Street in said town plat for a distance of 254 chains from the south end of said street, also to be vacated that part of Dillard Street in said town plat for a distance of 233 chains from south end of street. Also Vol 7, p. 332, July 5, 1900. of streets. K. S. R. 126.

STATE OF OREGON }
COUNTY OF DOUGLAS } ss
I, BEN B. IRVING, COUNTY SURVEYOR OF DOUGLAS COUNTY OREGON DO HEREBY CERTIFY THAT THIS COPY OF "DILLARD'S STATION" IS A TRUE AND CORRECT COPY OF THE ORIGINAL PLAT AS FILED IN THE OFFICE OF THE COUNTY CLERK AND IS MADE IN COMPLIANCE WITH CHAPTER 92 OREGON LAWS 1953 SEC. 92-130.

Ben B. Irving
COUNTY SURVEYOR

SUBSCRIBED AND SWORN TO BEFORE ME THIS 15th DAY OF December 1955.

Chas. Doerner
COUNTY CLERK

STATE OF OREGON }
COUNTY OF DOUGLAS } ss
I, CHAS. DOERNER, COUNTY CLERK OF DOUGLAS COUNTY OREGON DO HEREBY CERTIFY THAT THE FOREGOING COPY OF PLAT HAS BEEN BY ME COMPARED WITH THE ORIGINAL THEREOF THAT IT IS A TRUE AND CORRECT COPY THEREFROM AND OF THE WHOLE THEREOF AS THE SAME APPEARS ON FILE IN MY OFFICE AND CUSTODY.
WITNESS MY HAND AND OFFICIAL SEAL THIS 15th DAY OF December 1955.

Chas. Doerner
COUNTY CLERK