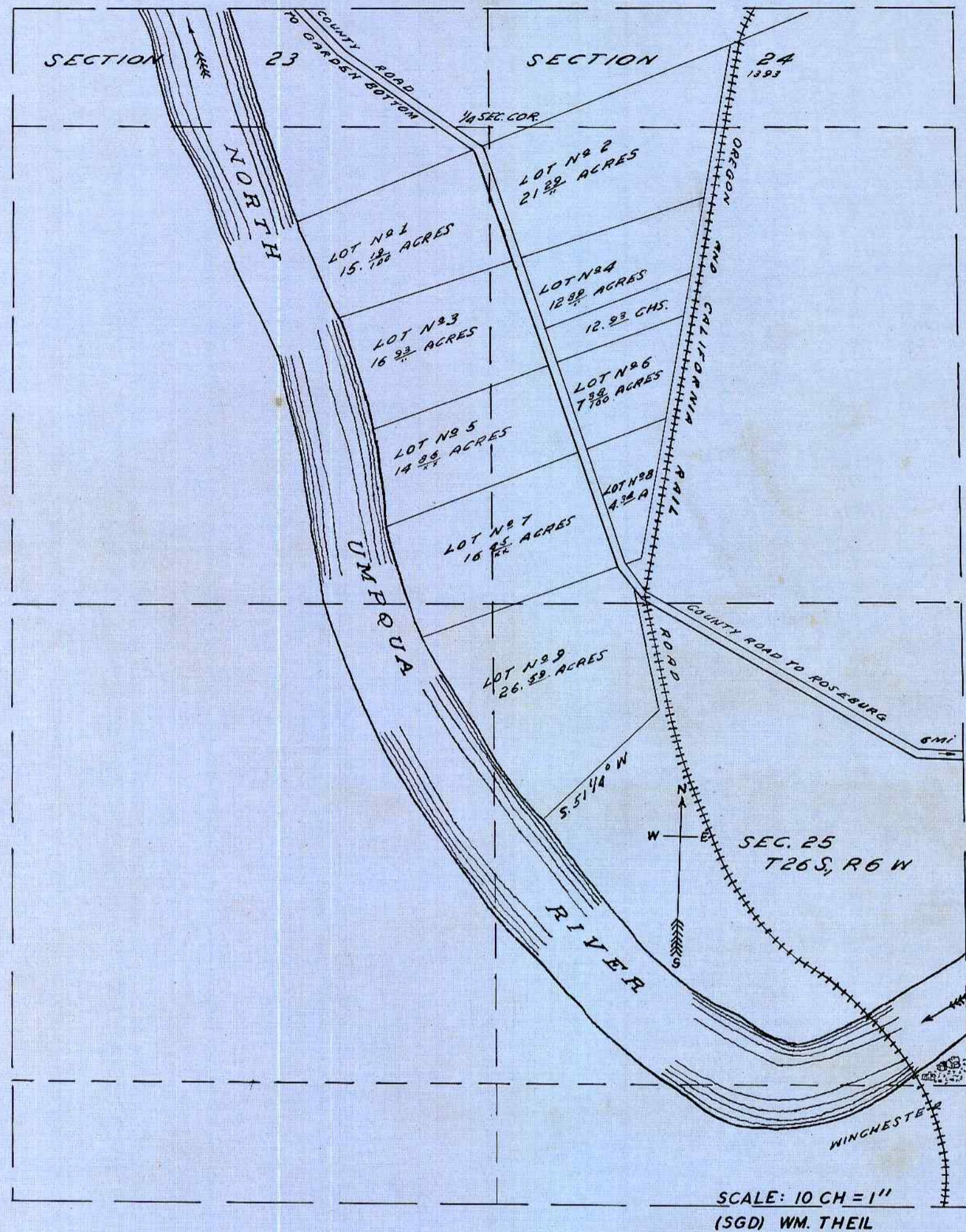


SANTA ROSA



RECORDED AT REQUEST OF THOS. GUTHRIE.
 ORIGINAL PLAT: RECORDED VOL. 37 P. 506 DEED RECORD.
 RECORDED DEC. 24th 1898.

(SGD.) J. F. GAZLEY, CO. CLERK.
 BY C. S. JACKSON, DEPUTY.

STATE OF OREGON }
 COUNTY OF DOUGLAS } SS

I, FRED M. DARBY, COUNTY SURVEYOR OF DOUGLAS COUNTY OREGON DO HEREBY CERTIFY THAT THIS COPY OF "SANTA ROSA" IS A TRUE AND CORRECT COPY OF THE ORIGINAL PLAT AS FILED IN THE OFFICE OF THE COUNTY CLERK AND IS MADE IN COMPLIANCE WITH CHAPTER 92 OREGON LAWS 1953 SEC. 92-130.

Fred M. Darby
 COUNTY SURVEYOR

LOT NO 1

BEGINS AT A DOUBLE PINE S. W. CORNER OF EWART BRO'S LAND RUNS N. 68° 30' E. 16 CHAINS TO MIDDLE OF COUNTY ROAD S. 30° E. 2.68 CHAINS. S. 17° 5' E. 7.30 CHAINS. S. 74° 45' W. 17.25 CHAINS. TO A POST FROM WHICH A BLACK OAK 12" IN DIAMETER BEARS S. 6° E. 87 LKS. THENCE N. 12° 15' W. 8.15 CHNS. TO BEGINNING.

LOT NO 2

BEGINNING AT THE N. E. CORNER OF LOT 1 FROM WHICH THE 1/4 SEC. COR. BETWEEN SEC. 23 AND 24 BEARS N. 68 1/2° E. 25 LKS. AND N. 22 1/2° E. 143 LKS. RUNS N. 68° 30' E. 23.20 CHS. TO RIGHT OF WAY OF O & C R. R. THENCE S. 11° 10' - 13.93 CHS. S. 74° 45' W. 15.95 CHS. TO MIDDLE OF COUNTY ROAD THENCE N. 17° 5' W. 7.35 CHS. N. 30° W. 2.68 CHAINS TO BEGINNING.

LOT NO 3

BEGINS AT S. W. COR. OF LOT NO. 1 RUNS N. 74° 45' E. 17-25 CHAINS S. 17° 5' E. 9.50 CHAINS S. 74° 45' W. 18.45 CHNS. TO A POST FROM WHICH A BLACK OAK 16" IN DIAM. BEARS S. 25 1/4° E. 55 LKS. THENCE N. 10° W. 9.50 CHAINS TO PLACE OF BEGINNING.

LOT NO 4

BEGINNING AT S. W. CORNER OF LOT NO 2 FROM WHICH A WHITE OAK 7" IN DIAMETER BEARS N. 74° 45' E. 45 LKS. AND SOUTH 16 3/4° E. 65 LKS. RUN N. 74° 45' E. 15.95 CHAINS S. 9° W. 10.47 CHAINS S. 74 1/4° W. 11.20 CHS. N. 17° 5' W. 9.50 CHS. TO BEGINNING.

LOT NO 5

BEGINS AT S. W. COR. OF LOT NO. 3 RUNS N. 74 1/4° E. 18.45 CHS. S. 17° 5' E. 8 CHS. S. 74° 45' W. 18.30 CHS. TO POST FROM WHICH A BLACK OAK 12" IN DIAMETER BEARS N 15° W 52 LKS. THENCE N. 15° 15' W. 8 CHNS TO BEGINNING.

LOT NO 6

BEGINS AT S. W. COR. LOT 4 RUNS N. 74° 45' E. 11.20 CH. S. 9° 30' W. 8.81 CHS. S. 74° 45' W. 7.25 CHS. N. 17° 05' W. 8 CHS. TO BEGINNING.

LOT NO 7

BEGINS AT S. W. COR. LOT NO. 5, RUNS N. 74° 45' E. 18.70 CHS. S. 17° E. 5.38 CHS. S. 31° E. 3.62 CHS. S. 74° 45' W. 18.17 CHS. TO A POST FROM WHICH A BLACK OAK 4" BEARS N. 85° E. THENCE N. 25° 50' W. 8.22 CHS. TO PLACE OF BEGINNING.

LOT NO 8

BEGINS AT S. W. CORNER OF LOT 6, RUNS N. 74° 45' E. 7.25 CHS. N. 9° 30' W. 9.94 CHNS S. 74° 45' W. 1.70 CHNS. N. 33° 45' W. 3.85 CHNS. N. 16° 55' W. 5.36 CHNS. TO BEGINNING FROM WHICH A BLACK OAK 30" IN DIAMETER BEARS N. 32° E. 260 LKS.

LOT NO 9

BEGINNING AT S. W. CORNER LOT NO. 7 RUNS N. 74° 45' E. 18.17 CHS. S. 34° 5' E. 3.17 CHS. S. 80° E. 4 CHNS. S. 19° 50' E. 5.20 CHAINS TO A POST FROM WHICH A BLACK OAK 24" IN DIAM. BEARS S. 45° W. 70 LINKS, THENCE S. 51° 15' W. 16.30 CHNS. TO A PLACE FROM WHICH A BLACK OAK 30" IN DIA. BEARS N. 66 1/2° E. 66 LINKS, THENCE N. 27° 50' W. 19.10 CHS. TO BEGINNING.

STATE OF OREGON }
 COUNTY OF DOUGLAS } SS

I, CHAS. DOERNER, COUNTY CLERK OF DOUGLAS COUNTY OREGON DO HEREBY CERTIFY THAT THE FOREGOING COPY OF PLAT HAS BEEN BY ME COMPARED WITH THE ORIGINAL THEREOF, THAT IT IS A TRUE AND CORRECT COPY THEREFROM AND OF THE WHOLE THEREOF AS THE SAME APPEARS ON FILE IN MY OFFICE AND CUSTODY.

WITNESS MY HAND AND OFFICIAL SEAL THIS 26th DAY OF March 1958.

Chas Doerner
 COUNTY CLERK

SUBSCRIBED AND SWORN TO BEFORE ME THIS 26th DAY OF March 1958.