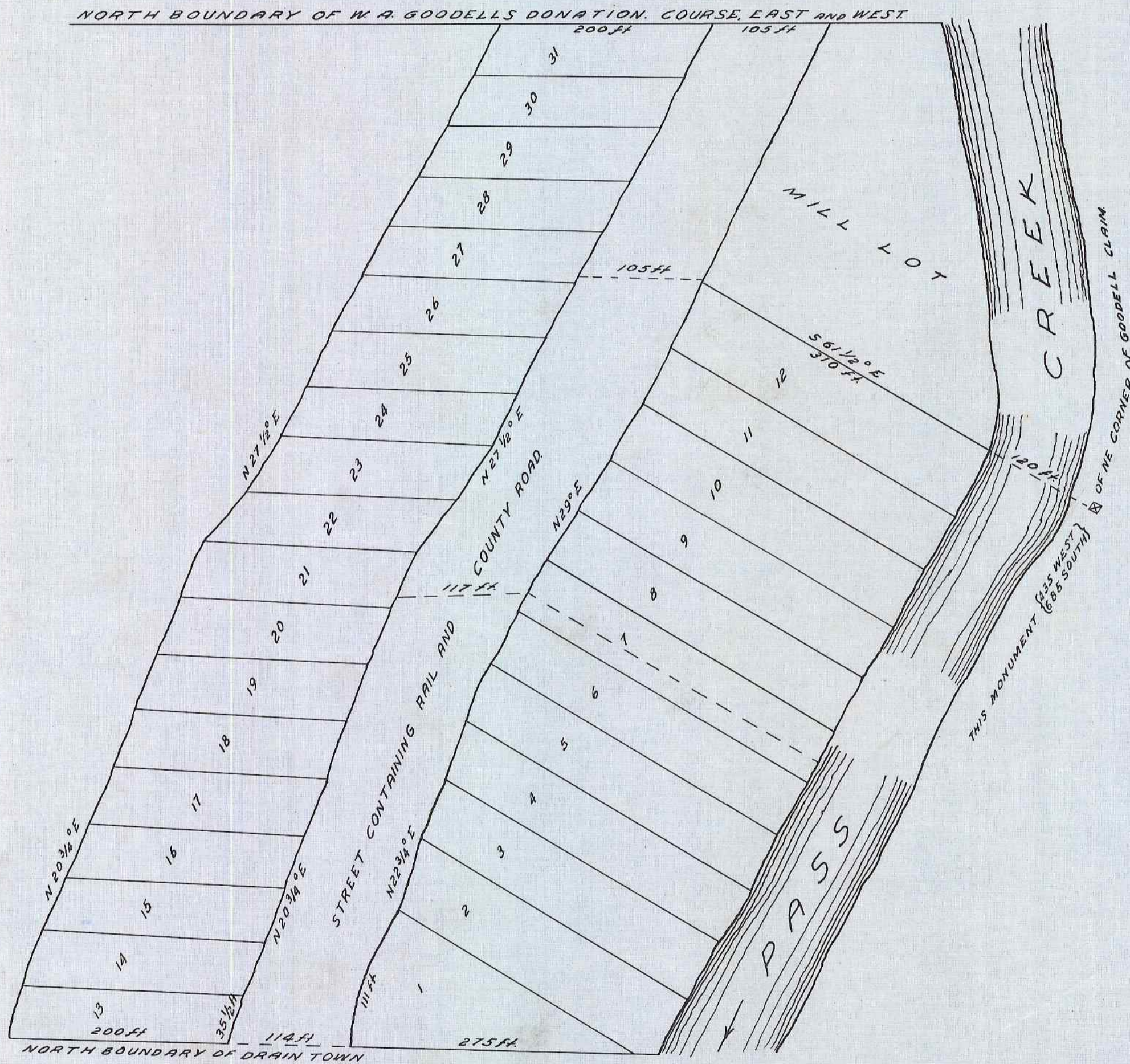


DRAIN'S ADDITION TO DRAIN

SEE VOL. 10 PAGE 181 DEED RECORDS
FOR FIELD NOTES

RECORDED JULY 28, 1878
(SGD.) T. R. SHERIDAN, CO. CLERK

NOTE: FOR COPY OF ABOVE DOCUMENT
SEE C. S. 58/236.
7-12-80 J.R.



STATE OF OREGON }
 COUNTY OF DOUGLAS } ss
 I, BEN B. IRVING, COUNTY SURVEYOR OF DOUGLAS COUNTY OREGON DO HEREBY CERTIFY THAT THIS COPY OF
 "DRAIN'S ADDITION TO DRAIN" IS A TRUE AND CORRECT COPY OF THE ORIGINAL PLAT AS FILED IN THE OFFICE OF THE
 COUNTY CLERK AND IS MADE IN COMPLIANCE WITH CHAPTER 92 OREGON LAWS 1953 SEC. 92-130.

Ben B. Irving
 COUNTY SURVEYOR

SUBSCRIBED AND SWORN TO BEFORE ME THIS 15th DAY OF December 1955.

Chas Doerner
 COUNTY CLERK

STATE OF OREGON }
 COUNTY OF DOUGLAS } ss
 I, CHAS DOERNER, COUNTY CLERK OF DOUGLAS COUNTY OREGON DO HEREBY CERTIFY THAT THE FOREGOING
 COPY OF PLAT HAS BEEN BY ME COMPARED WITH THE ORIGINAL THEREOF THAT IT IS A TRUE AND CORRECT COPY
 THEREFROM AND OF THE WHOLE THEREOF AS THE SAME APPEARS ON FILE IN MY OFFICE AND CUSTODY.
 WITNESS MY HAND AND OFFICIAL SEAL THIS 15th DAY OF December 1955.

Chas Doerner
 COUNTY CLERK