

GARDINER

SCALE 200 FT = 1 INCH

(SGD) W^m THIEL SUR

FOR ORIGINAL PLAT SEE VOL. 11 PAGE 293 DEED RECORDS RECORDED MARCH 15th 1880
(SGD) T. R. SHERIDAN CO. CLERK

BLOCKS 2 & 3 CONTAIN EACH 8 LOTS EACH 50 X 125 FT BLOCKS 6, 7, 8, 9, 11 & 12 CONTAIN EACH 4 LOTS 50 X 100 FT BLOCK 10 CONTAINS 4 LOTS 1, 2, 4 & 5 EACH 50 X 100 FT AND LOT 3-30 X 100 FT BLOCKS 13, 14, 16, 11, 18 & 19 CONTAIN 8 LOTS EACH 50 X 80 FEET BLOCK 15 CONTAINS 8 LOTS 1, 2, 4, 5, 6, 7, 9 & 10 EACH 50 X 80 FT. LOTS 3 & 8-30 X 80' BLOCK 20 CONTAINS 7 LOTS EACH 50 X 80 FT. BLOCK 21 CONT. LOTS 2, 3, 5, 6, 7 EACH 50 X 80 FT LOTS 1 & 8 EACH 33 1/2 X 80' LOT 4 IS 40 X 80 FT. BLOCK 22 CONT. 2 LOTS 75 X 150 FT. THE FLAG STAFF AT THE S. W. CORNER OF BLOCK 22 IS 9.95 CHNS N. IS 1.05 CHNS. E OF MEANDER POST BETWEEN SECS. 22 & 27 T. 21 S. R. 12 W. STREETS ARE 50 FT. WIDE & RUN N. 78° 15' E & N. 11° 45' W.

STATE OF OREGON }
COUNTY OF DOUGLAS }
I, BEN B. IRVING, COUNTY SURVEYOR OF DOUGLAS COUNTY OREGON DO HEREBY CERTIFY THAT THIS COPY OF GARDINER IS A TRUE AND CORRECT COPY OF THE ORIGINAL PLAT AS FILED IN THE OFFICE OF THE COUNTY CLERK AND IS MADE IN COMPLIANCE WITH CHAPTER 92 OREGON LAWS 1953 SEC. 92-130.

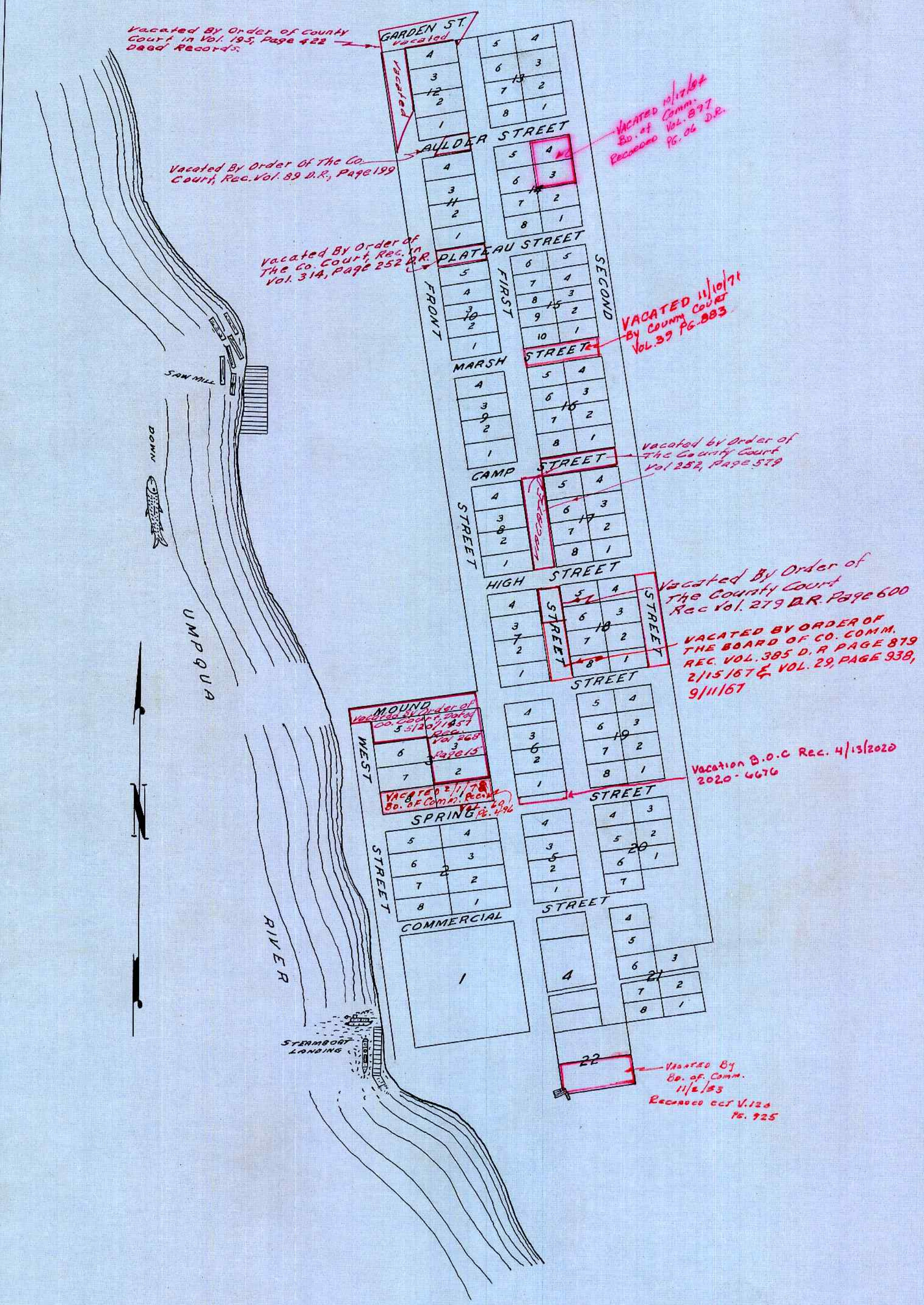
Ben B. Irving
COUNTY SURVEYOR

SUBSCRIBED AND SWORN TO BEFORE ME THIS 15th DAY OF December 1955.

Chas Doerner
COUNTY CLERK

STATE OF OREGON }
COUNTY OF DOUGLAS }
I, CHAS DOERNER, COUNTY CLERK OF DOUGLAS COUNTY OREGON DO HEREBY CERTIFY THAT THE FOREGOING COPY OF PLAT HAS BEEN BY ME COMPARED WITH THE ORIGINAL THEREOF THAT IT IS A TRUE AND CORRECT COPY THEREFROM AND OF THE WHOLE THEREOF AS THE SAME APPEARS ON FILE IN MY OFFICE AND CUSTODY.
WITNESS MY HAND AND OFFICIAL SEAL THIS 15th DAY OF December 1955.

Chas Doerner
COUNTY CLERK



NOTE: SEE C.S. FILE M 11-24 FOR "AMENDED" PLAT -