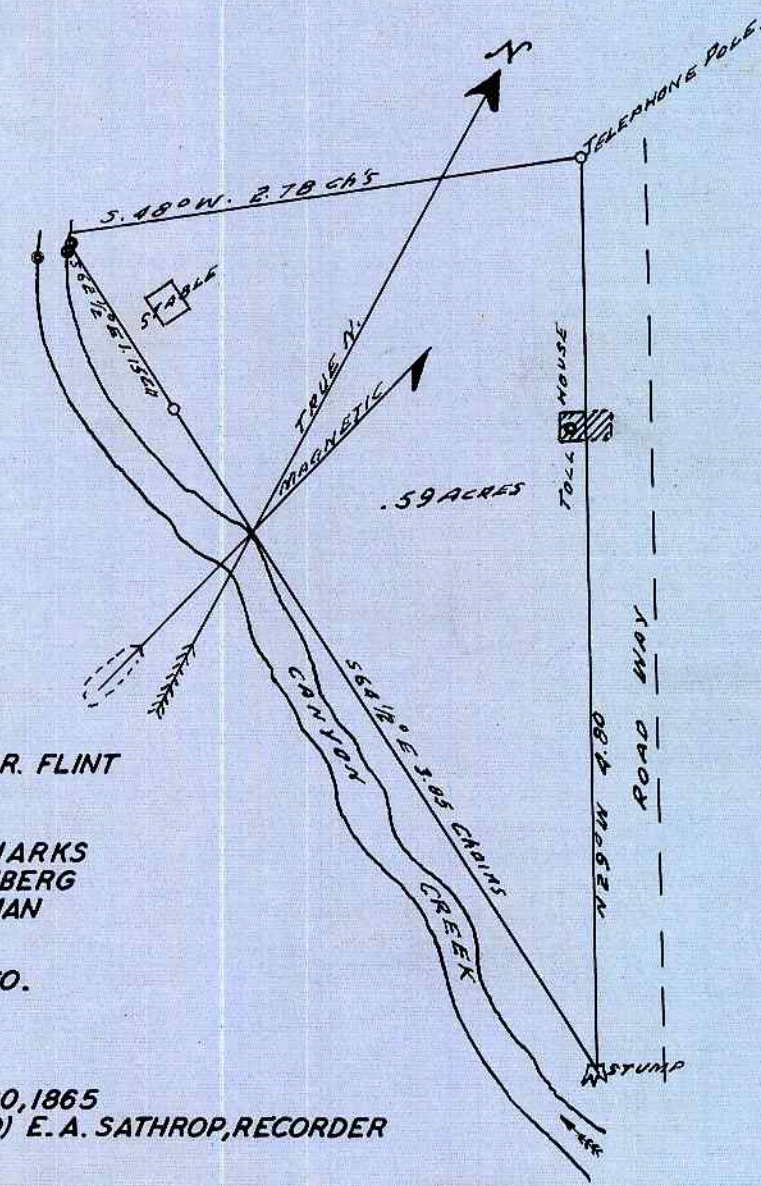


N.W 1/4 OF THE N.W 1/4 OF SEC. 17 TP. 22 S., R. 5 W. W.M.

LOTS ARE 50 FT. WIDE

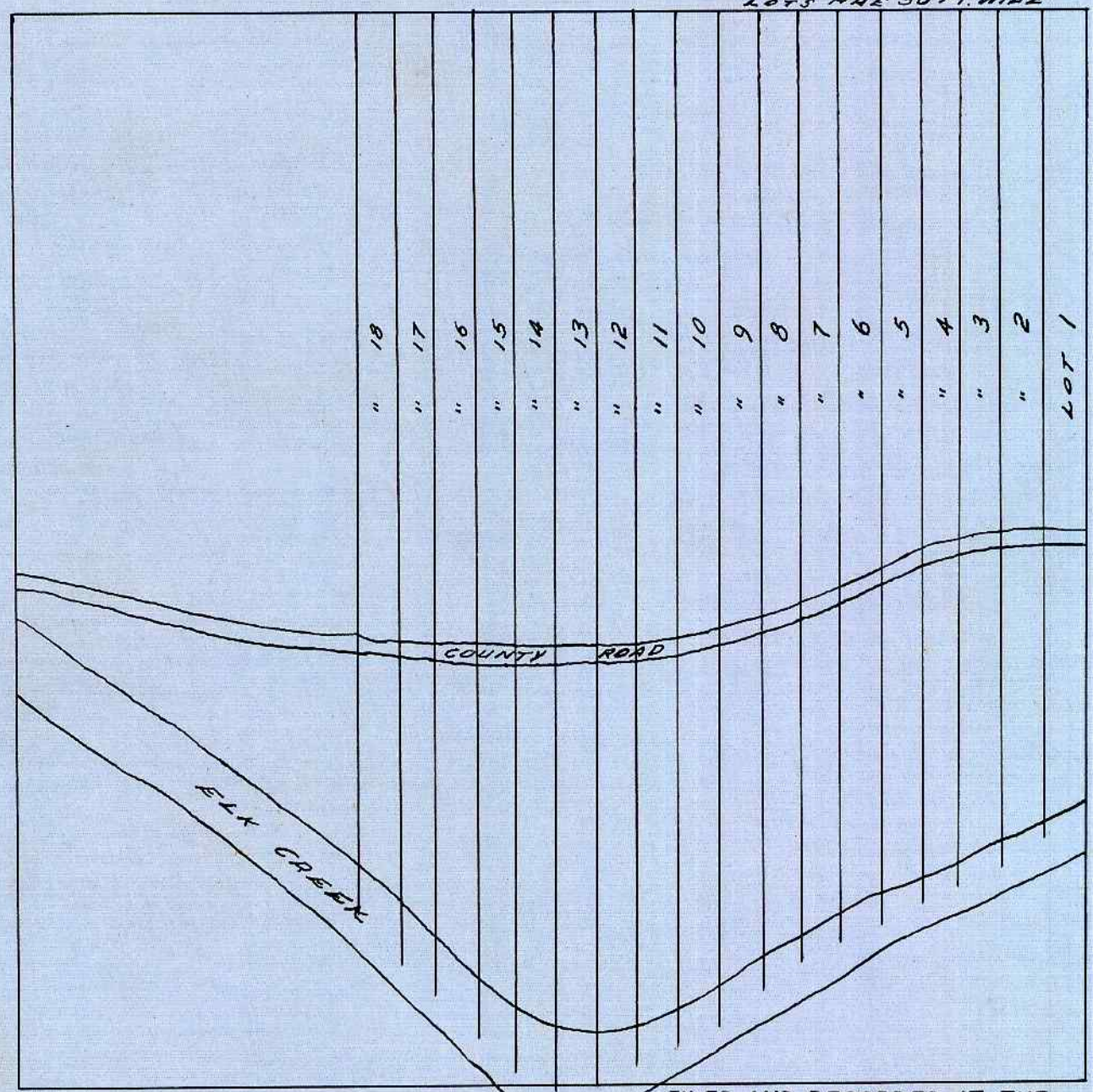


AS SURVEYED BY A. R. FLINT
 JULY 19, 1865

(SGD) SAMUEL MARKS
 (SGD) H. WOLLENBERG
 (SGD) B. J. SIDEMAN
 TO
 CANYON ROAD CO.

RECORDED SEPT. 30, 1865
 (SGD) E. A. SATHROP, RECORDER

FOR ORIGINAL PLAT SEE V. 3, P. 236 DEED RECORDS



FILED AND RECORDED AT THE
 REQUEST OF T. K. GARDNER ON
 JAN. 24 " 1889.
 (SGD) G. A. TAYLOR, CO. CLERK
 BY F. W. BENSON, DEPUTY

FOR ORIGINAL PLAT SEE VOL. 20, P. 568
 DEED REC.

STATE OF OREGON }
 COUNTY OF DOUGLAS } SS

I, FRED M. DARBY, COUNTY SURVEYOR OF DOUGLAS COUNTY OREGON, DO HEREBY CERTIFY THAT THIS COPY OF "VOL. 2, PAGE 27 OF PLATS" IS A TRUE AND CORRECT COPY OF THE ORIGINAL PLAT AS FILED IN THE OFFICE OF THE COUNTY CLERK AND IS MADE IN COMPLIANCE WITH CHAPTER 92 OREGON LAWS 1953 SEC. 92-130.

Fred M. Darby
 COUNTY SURVEYOR

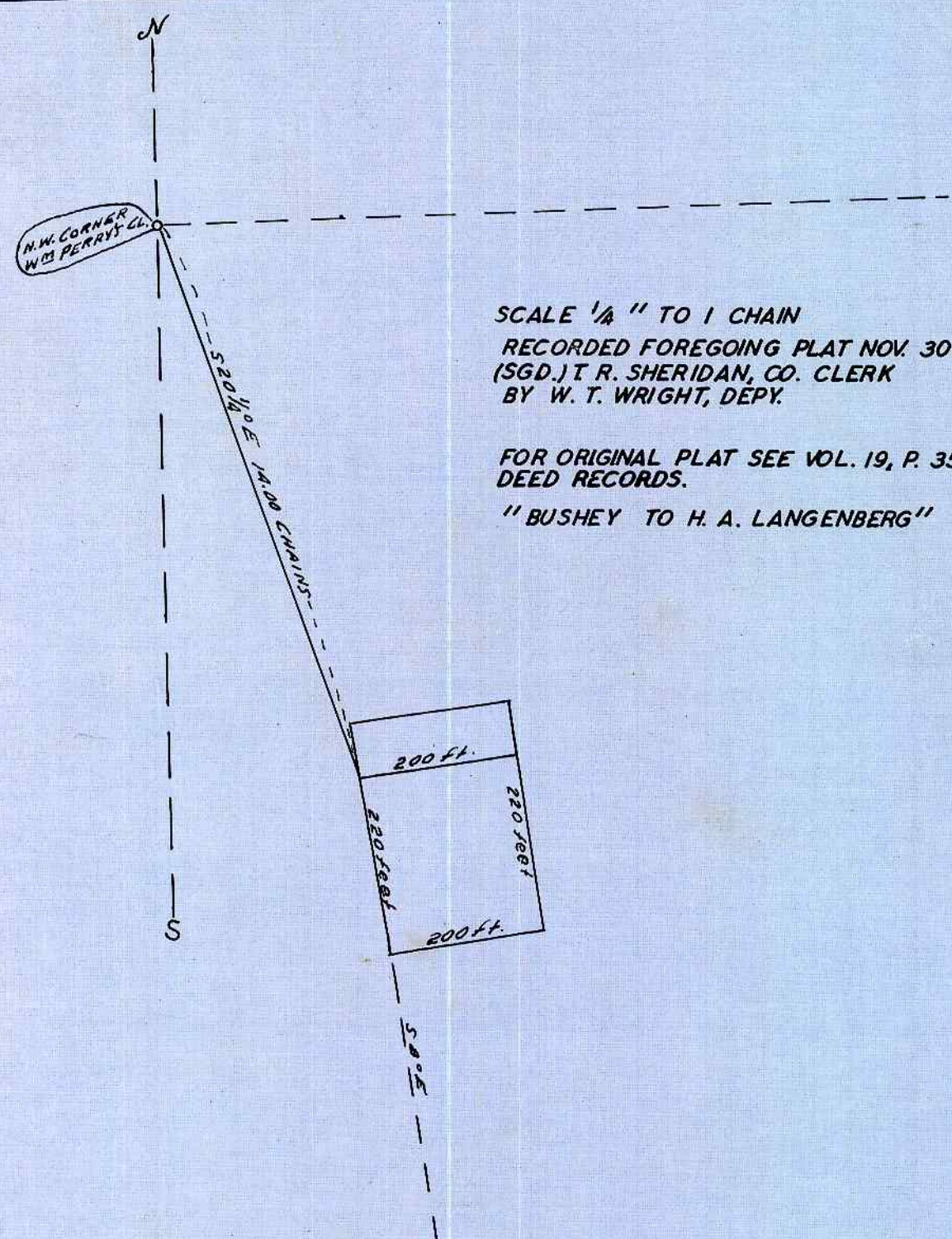
SUBSCRIBED AND SWORN TO BEFORE ME THIS 16th DAY OF April, 1958.

Chas Doerner
 COUNTY CLERK

STATE OF OREGON }
 COUNTY OF DOUGLAS } SS

I, CHAS DOERNER, COUNTY CLERK OF DOUGLAS COUNTY OREGON, DO HEREBY CERTIFY THAT THE FOREGOING COPY OF PLAT HAS BEEN BY ME COMPARED WITH THE ORIGINAL THEREOF THAT IT IS A TRUE AND CORRECT COPY THEREFROM AND OF THE WHOLE THEREOF AS THE SAME APPEARS ON FILE IN MY OFFICE AND CUSTODY. WITNESS MY HAND AND OFFICIAL SEAL THIS 16th DAY OF April, 1958.

Chas Doerner
 COUNTY CLERK



SCALE 1/4 " TO 1 CHAIN
 RECORDED FOREGOING PLAT NOV. 30 " 1887
 (SGD) I. R. SHERIDAN, CO. CLERK
 BY W. T. WRIGHT, DEPY.

FOR ORIGINAL PLAT SEE VOL. 19, P. 357
 DEED RECORDS.

"BUSHEY TO H. A. LANGENBERG"