

# CANYONVILLE OREGON

FIELD NOTES  
(RESURVEY)

BEGINNING AT THE NORTH WEST CORNER OF JOSEPH ROBERTS DONATION LAND CLAIM VIZ: CLAIM NO 59 IN SECTIONS NO 27 AND 34 TOWNSHIP 30 SOUTH RANGE 5 WEST THENCE SOUTH 30° 30' EAST 23.62 CHAINS SET A LARGE STONE MARKED WITH A CROSS (X) AND A DRILLED HOLE FOR BEGINNING POINT AND WHICH IS 14.23 CHAINS EAST AND 34 LINKS SOUTH OF CORNER TO SECTIONS 27-28-33 AND 34 FROM THIS POINT AS THE MIDDLE POINT OF INTERSECTION OF FIFTH (5TH) AND GROVE STREETS PROCEEDED TO LAY OFF SAID PER ACCOMPANYING PLAT, PLANTING STONES SIMILAR TO ONES ALREADY DESCRIBED, THE INTERSECTION OF 1ST 3RD AND 5TH (FIRST, THIRD, AND FIFTH) STREETS WITH ALL STREETS BY THEM INTERSECTED. ALL BLOCKS EXCEPT NOS 15-17-18 AND 29 ARE 200 FT SQUARE DIVIDED INTO 8 LOTS 50 X 100, BLOCK NO 15 IS 200 FEET BY 250 FEET DIVIDED INTO 4 LOTS 50 FEET WIDE BY 250 LONG, BLOCKS 17 & 18 ARE 150 X 200 FEET AND ARE DIVIDED INTO SIX LOTS EACH SAME SIZE AS OTHER LOTS OF THE REGULAR BLOCKS. BLOCK NO 29 IS 200 BY 207 FEET DIVIDED INTO 8 LOTS: NOS 1 & 8 CONTAINING THE EXTRA SEVEN FEET. THE STREETS ARE LOCATED AT RT. ANGLES NORTH 30° WEST OR SOUTH 30° EAST AND NORTH 60° EAST OR SOUTH 60° WEST, 1ST, 2ND, 3RD, 4TH & 5TH STREETS ARE ALL OF UNIFORM WIDTH - 60 FEET EACH, MAIN STREET IS 80 FEET WIDE, WALL STREET ONLY 46 FEET AND ALL OTHERS 50 FEET WIDE. CANYONVILLE IS LOCATED ON THE NORTH AND WEST SIDE OF CANYON CREEK IN DOUGLAS COUNTY OREGON ON THE CLAMES AND SECTIONS ABOVE DESCRIBED.

I HEREBY CERTIFY THAT THE FOREGOING NOTES AND ACCOMPANYING PLAT IS A CORRECT DESCRIPTION OF THE TOWN OF CANYONVILLE LOCATED AS ABOVE DESCRIBED AS SURVEYED AND MARKED BY ME JULY 21-22- AND 23: 1880.

(SGD) W. H. BYARS, SURVEYOR  
RECORDED JULY 31, 1880  
(SGD) T. R. SHERIDAN, CO. CLERK  
BY W. T. WRIGHT, DEPY

STATE OF OREGON }  
COUNTY OF DOUGLAS } SS  
I, BEN B. IRVING, COUNTY SURVEYOR OF DOUGLAS COUNTY OREGON DO HEREBY CERTIFY THAT THIS COPY OF CANYONVILLE (RESURVEY), IS A TRUE AND CORRECT COPY OF THE ORIGINAL PLAT AS FILED IN THE OFFICE OF THE COUNTY CLERK, AND IS MADE IN COMPLIANCE WITH CHAPTER 92 OREGON LAWS 1953 SEC. 92-130.

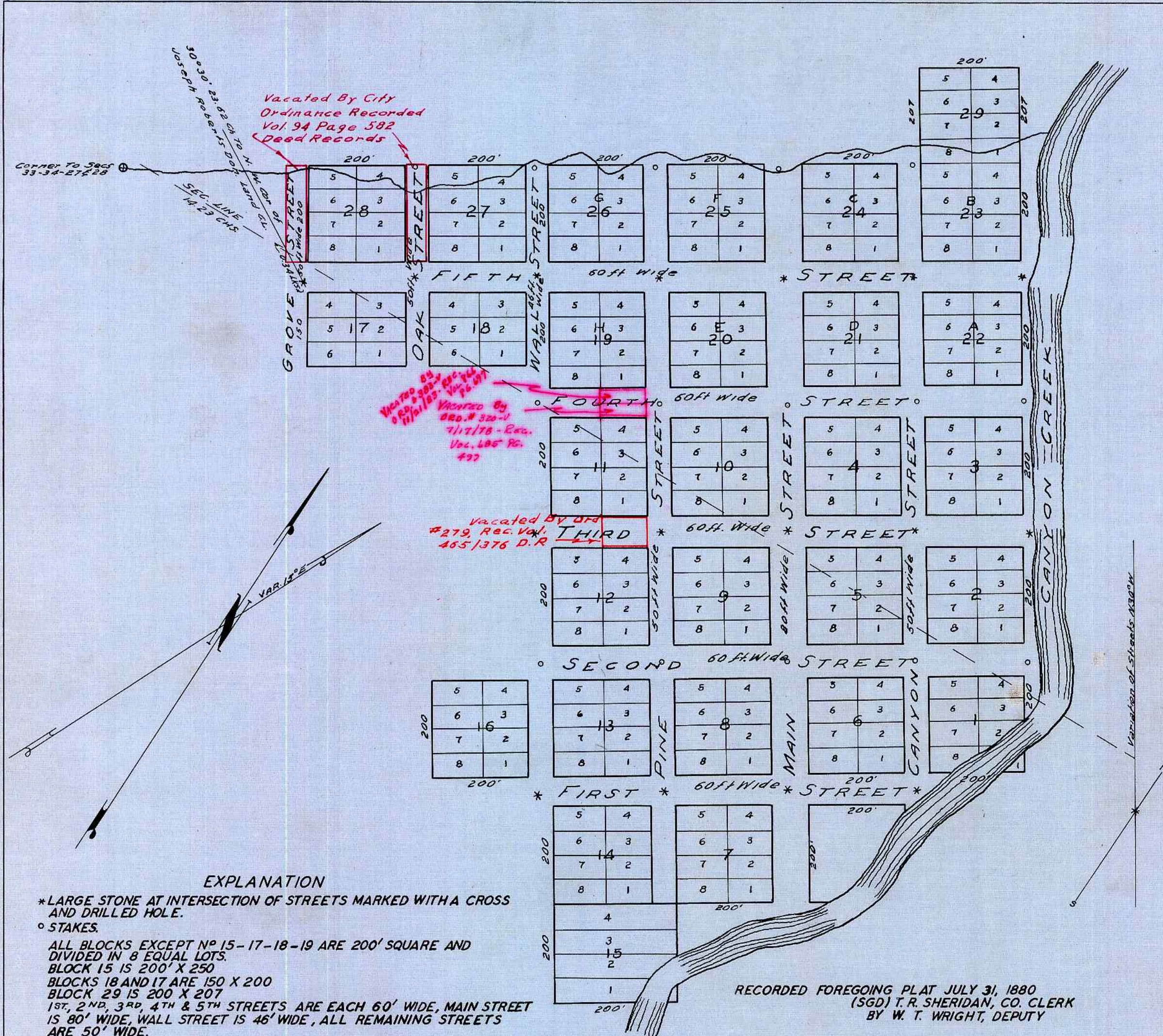
*Ben B. Irving*  
COUNTY SURVEYOR

SUBSCRIBED AND SWORN TO BEFORE ME THIS 15<sup>th</sup> DAY OF December 1955.

*Chas Doerner*  
COUNTY CLERK

STATE OF OREGON }  
COUNTY OF DOUGLAS } SS  
I, CHAS DOERNER, COUNTY CLERK OF DOUGLAS COUNTY OREGON DO HEREBY CERTIFY THAT THE FOREGOING COPY OF PLAT HAS BEEN BY ME COMPARED WITH THE ORIGINAL THEREOF THAT IT IS A TRUE AND CORRECT COPY THEREFROM AND OF THE WHOLE THEREOF AS THE SAME APPEARS ON FILE IN MY OFFICE AND CUSTODY.  
WITNESS MY HAND AND OFFICIAL SEAL THIS 15<sup>th</sup> DAY OF December 1955.

*Chas Doerner*  
COUNTY CLERK



**EXPLANATION**  
\* LARGE STONE AT INTERSECTION OF STREETS MARKED WITH A CROSS AND DRILLED HOLE.  
o STAKES.  
ALL BLOCKS EXCEPT NO 15-17-18-19 ARE 200' SQUARE AND DIVIDED IN 8 EQUAL LOTS.  
BLOCK 15 IS 200' X 250  
BLOCKS 18 AND 17 ARE 150 X 200  
BLOCK 29 IS 200 X 207  
1ST, 2ND, 3RD, 4TH & 5TH STREETS ARE EACH 60' WIDE, MAIN STREET IS 80' WIDE, WALL STREET IS 46' WIDE, ALL REMAINING STREETS ARE 50' WIDE.

RECORDED FOREGOING PLAT JULY 31, 1880  
(SGD) T. R. SHERIDAN, CO. CLERK  
BY W. T. WRIGHT, DEPUTY

FOR ORIGINAL PLAT SEE VOL. 11, PAGE 479 OF DEED RECORDS