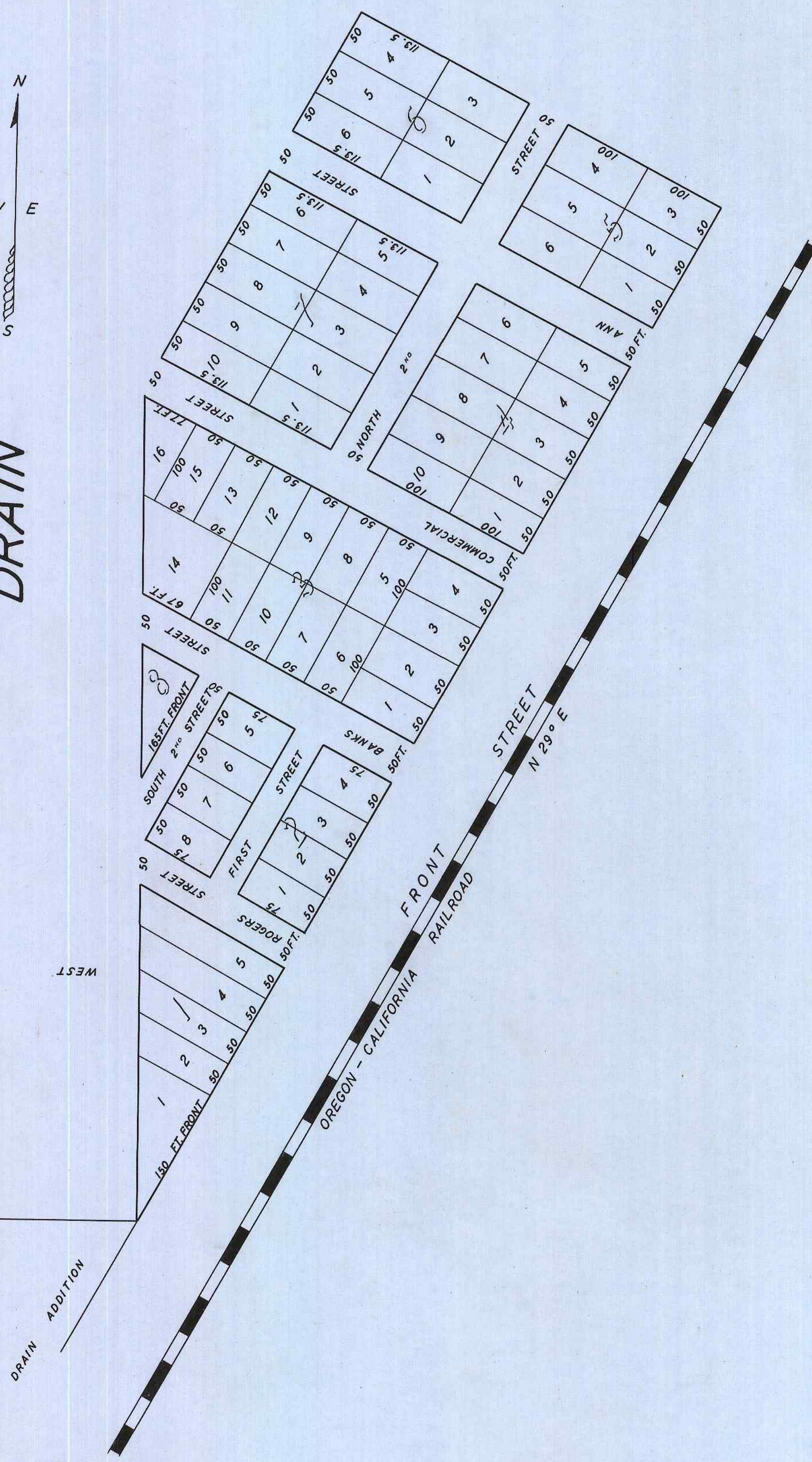
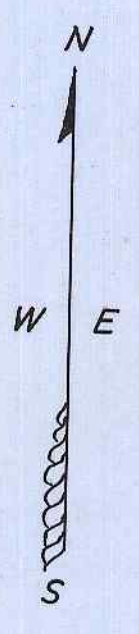


KREWSON'S ADDITION TO DRAIN



STATE OF OREGON } S.S.
 COUNTY OF DOUGLAS }
 I, ROY AGEE, COUNTY CLERK OF DOUGLAS COUNTY, OREGON, DO HEREBY CERTIFY THAT THE FOREGOING COPY OF PLAT HAS BEEN BY ME COMPARED WITH THE ORIGINAL THEREOF, THAT IT IS A TRUE AND CORRECT COPY THEREFROM, AND OF THE WHOLE THEREOF, AS THE SAME APPEARS ON FILE IN MY OFFICE AND CUSTODY. WITNESS MY HAND AND OFFICIAL SEAL THIS 30th DAY OF October, 1952.

Roy Agee
 COUNTY CLERK

RECORDED MARCH 22, 1879
 T.R. SHERIDAN (S'G'D.)
 CO. CLERK

FOR FIELD NOTES SEE PAGE 546, VOL. 10, DEED RECORD