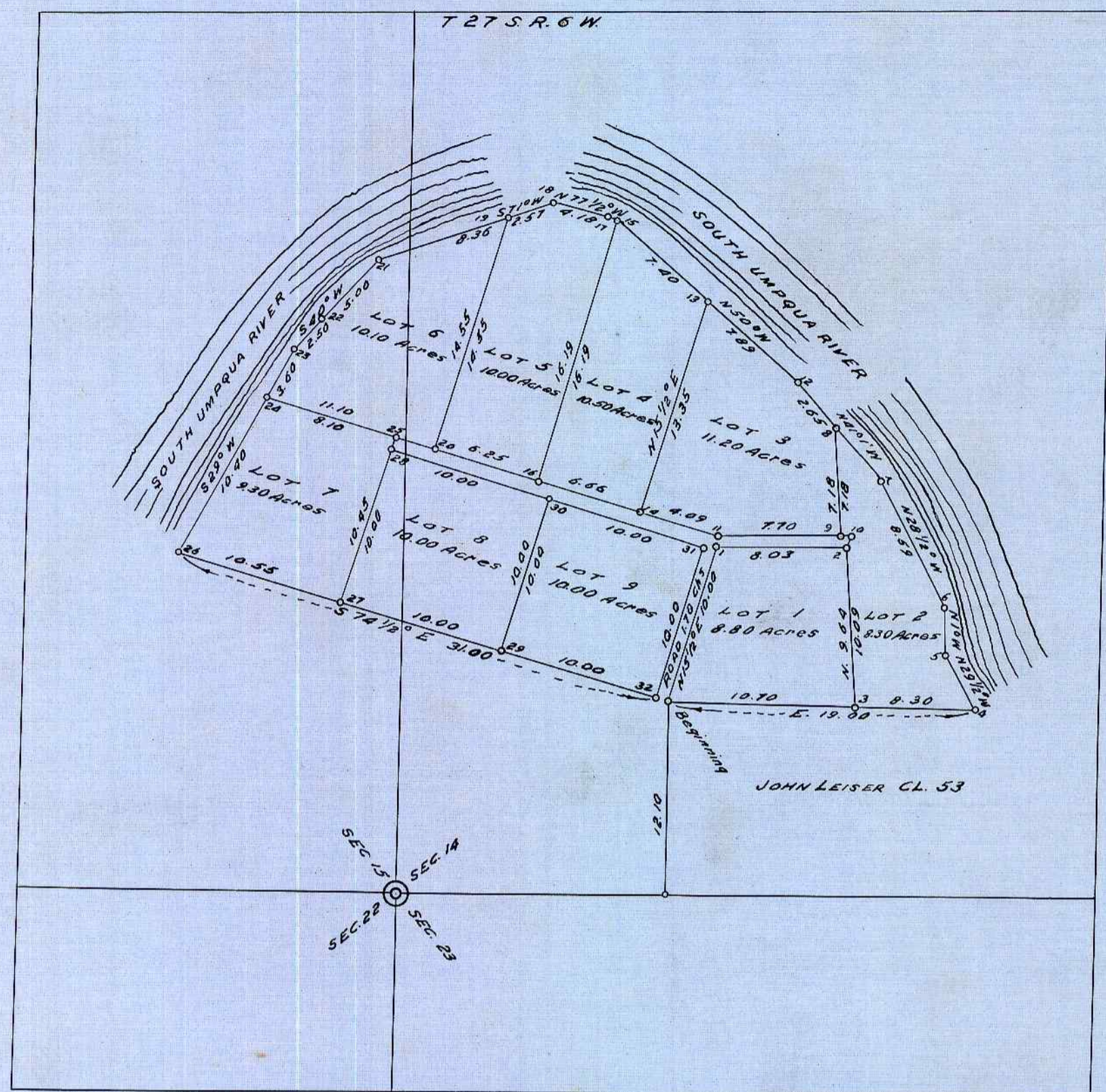


WILES FRUIT TRACT

SCALE 10" TO MILE
1893, (SGD) W. F. BRIGGS, CO. SUR.

FOR ORIGINAL SEE PLAT
RECORDED VOL. 31 P. 390
DEED RECORDS

RECORDED MAY 14 - 1894
(SGD) F. W. BENSON, CO. CLERK



STATE OF OREGON }
COUNTY OF DOUGLAS } SS

I, BEN B. IRVING, COUNTY SURVEYOR OF DOUGLAS COUNTY OREGON DO HEREBY CERTIFY THAT THIS COPY OF "WILES FRUIT TRACT" IS A TRUE AND CORRECT COPY OF THE ORIGINAL PLAT AS FILED IN THE OFFICE OF THE COUNTY CLERK, AND IS MADE IN COMPLIANCE WITH CHAPTER 92, OREGON LAWS 1953 SEC. 92-130.

Ben B. Irving
COUNTY SURVEYOR

SUBSCRIBED AND SWORN TO BEFORE ME THIS 15th DAY OF December 1955

Chas. Doerner
COUNTY CLERK

STATE OF OREGON }
COUNTY OF DOUGLAS } SS

I, CHAS. DOERNER, COUNTY CLERK OF DOUGLAS COUNTY OREGON DO HEREBY CERTIFY THAT THE FOREGOING COPY OF PLAT HAS BEEN BY ME COMPARED WITH THE ORIGINAL THEREOF, THAT IT IS A TRUE AND CORRECT COPY THEREFROM AND OF THE WHOLE THEREOF AS THE SAME APPEARS ON FILE IN MY OFFICE AND CUSTODY.

WITNESS MY HAND AND OFFICIAL SEAL THIS 15th DAY OF December 1955.

Chas. Doerner
COUNTY CLERK