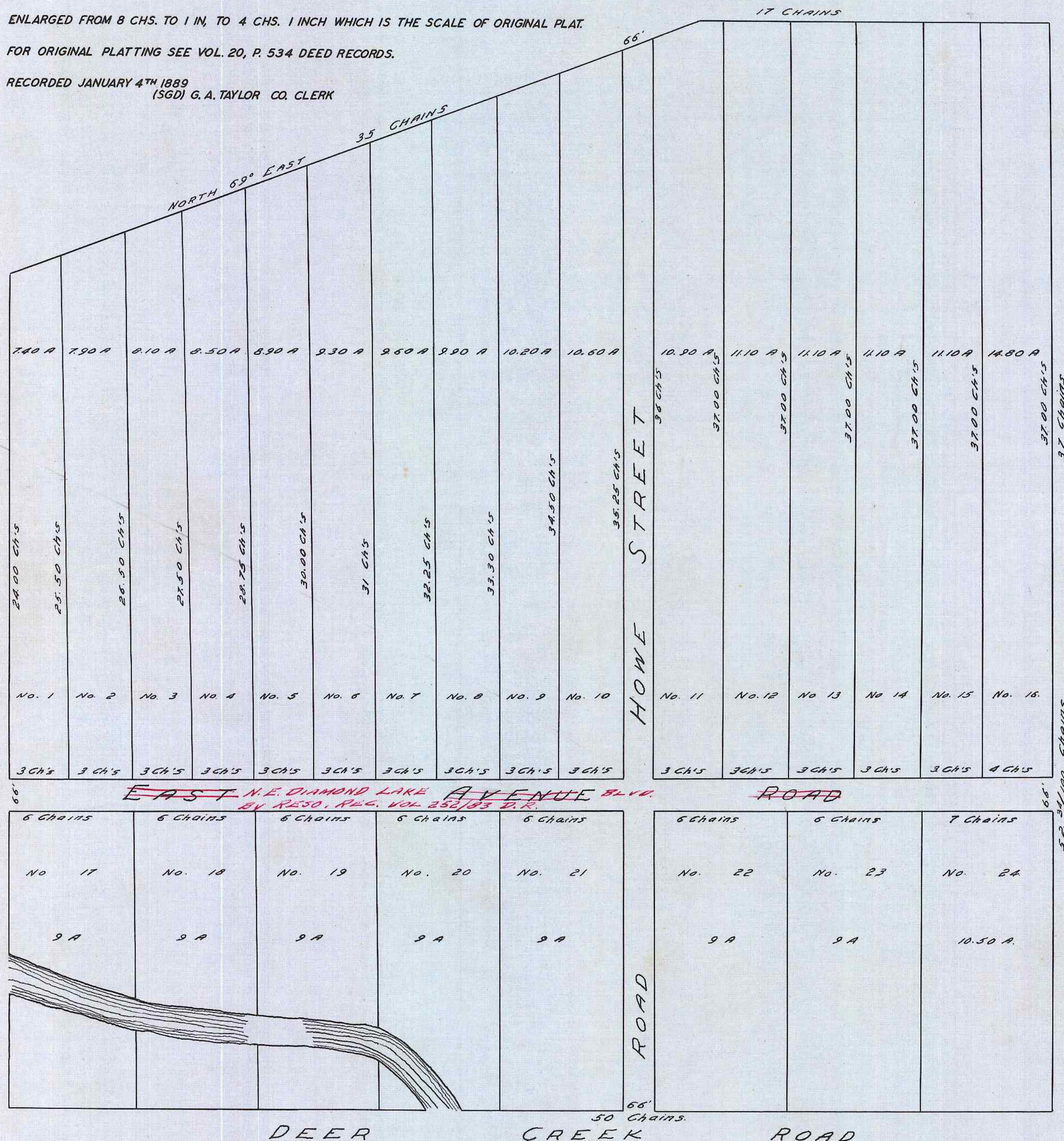


ENLARGED FROM 8 CHS. TO 1 IN. TO 4 CHS. 1 INCH WHICH IS THE SCALE OF ORIGINAL PLAT.  
FOR ORIGINAL PLATTING SEE VOL. 20, P. 534 DEED RECORDS.

RECORDED JANUARY 4<sup>TH</sup> 1889  
(SGD) G. A. TAYLOR CO. CLERK



# FIRST ADDITION OF BROOKSIDE TO ROSEBURG

STATE OF OREGON }  
COUNTY OF DOUGLAS } SS  
I, BEN B. IRVING COUNTY SURVEYOR OF DOUGLAS COUNTY OREGON DO HEREBY CERTIFY THAT THIS COPY OF "FIRST ADDITION OF BROOKSIDE TO ROSEBURG" IS A TRUE AND CORRECT COPY OF THE ORIGINAL PLAT AS FILED IN THE OFFICE OF THE COUNTY CLERK AND IS MADE IN COMPLIANCE WITH CHAPTER 92 OREGON LAWS 1953 SEC 92-130.

*Ben B. Irving*  
COUNTY SURVEYOR

SUBSCRIBED AND SWORN TO BEFORE ME THIS 15<sup>th</sup> DAY OF December 1955

*Chas Doerner*  
COUNTY CLERK

STATE OF OREGON }  
COUNTY OF DOUGLAS } SS  
I, CHAS DOERNER COUNTY CLERK OF DOUGLAS COUNTY OREGON DO HEREBY CERTIFY THAT THE FOREGOING COPY OF PLAT HAS BEEN BY ME COMPARED WITH THE ORIGINAL THEREOF THAT IT IS A TRUE AND CORRECT COPY THEREFROM AND OF THE WHOLE THEREOF AS THE SAME APPEARS ON FILE IN MY OFFICE AND CUSTODY.  
WITNESS MY HAND AND OFFICIAL SEAL THIS 15<sup>th</sup> DAY OF December 1955

*Chas Doerner*  
COUNTY CLERK