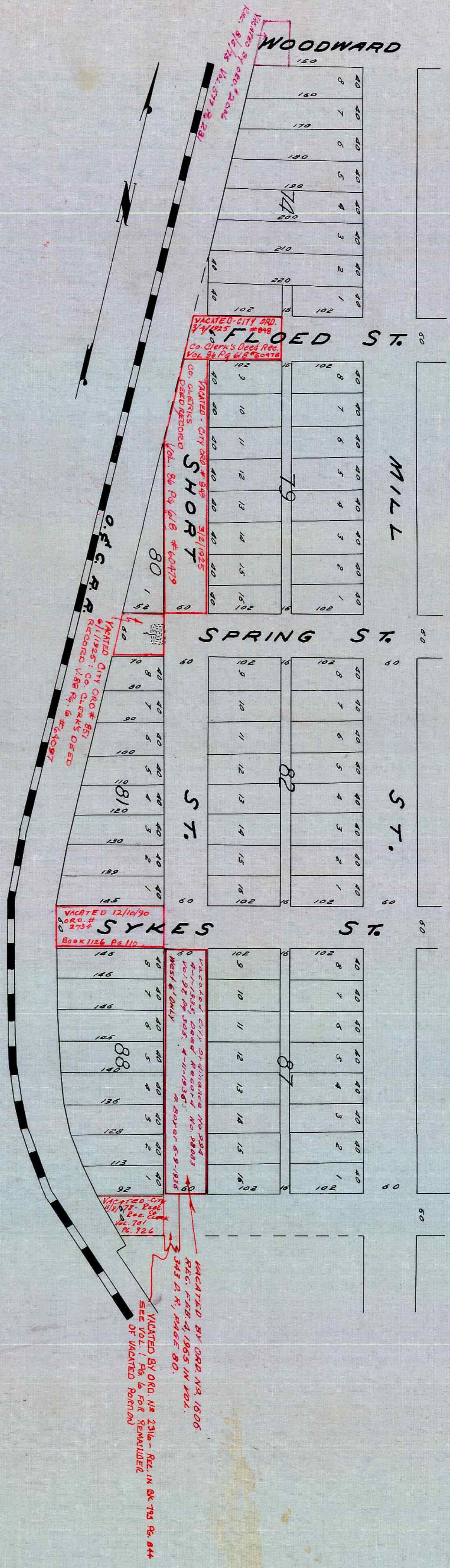


ROSE'S 2ND SOUTHERN ADDITION TO ROSEBURG

FILED FOR RECORD AT 11:30 P.M. APRIL 28, 1888.
RECORDED APRIL 28, 1888.
(SGD) T. R. SHERIDAN, COUNTY CLERK
BY W. F. WRIGHT, DEPUTY

FOR ORIGINAL PLATTING SEE VOL. 20 PAGE DEED RECORDS



STATE OF OREGON }
 COUNTY OF DOUGLAS } SS
 I, BEN B. IRVING, COUNTY SURVEYOR OF DOUGLAS COUNTY OREGON DO HEREBY CERTIFY THAT THIS COPY OF "ROSE'S 2ND SOUTHERN ADDITION" IS A TRUE AND CORRECT COPY OF THE ORIGINAL PLAT AS FILED IN THE OFFICE OF THE COUNTY CLERK AND IS MADE IN COMPLIANCE WITH CHAPTER 92 OREGON LAWS 1953 SEC. 92-130.

Ben B. Irving
 COUNTY SURVEYOR

SUBSCRIBED AND SWORN TO BEFORE ME THIS 15th DAY OF December 1955.

Chas. Doerner
 COUNTY CLERK

STATE OF OREGON }
 COUNTY OF DOUGLAS } SS
 I, CHAS. DOERNER, COUNTY CLERK OF DOUGLAS COUNTY OREGON DO HEREBY CERTIFY THAT THE FOREGOING COPY OF PLAT HAS BEEN BY ME COMPARED WITH THE ORIGINAL THEREOF THAT IT IS A TRUE AND CORRECT COPY THEREFROM AND OF THE WHOLE THEREOF AS THE SAME APPEARS ON FILE IN MY OFFICE AND IN MY POSSESSION AND CUSTODY.

Chas. Doerner
 COUNTY CLERK