

52PB20A

STERLING'S ADDITION

TO

OAKLAND

I HEREBY CERTIFY THAT THE ABOVE IS CORRECT
(SGD) W. H. BYERS, SURVEYOR
WILBUR, OR. JULY 10, 1870

FOR ORIGINAL PLAT SEE VOL. 4, P. 790 DEED RECORDS

RECORDED 11 A.M. 4TH AUGUST 1870 (SGD) E. C. STEVENS, CLERK OF DOUGLAS CO.
PR. JOE WALTON, DEPUTY

STATE OF OREGON)
COUNTY OF DOUGLAS) SS
I BENJ. BURNING, COUNTY SURVEYOR OF DOUGLAS COUNTY OREGON DO
HEREBY CERTIFY THAT THIS COPY OF STERLING'S ADDITION IS A TRUE AND
CORRECT COPY OF THE ORIGINAL PLAT AS FILED IN THE OFFICE OF THE
COUNTY CLERK AND IS MADE IN COMPLIANCE WITH CHAPTER 92 OREGON LAWS
1953 SEC. 92 - 130.

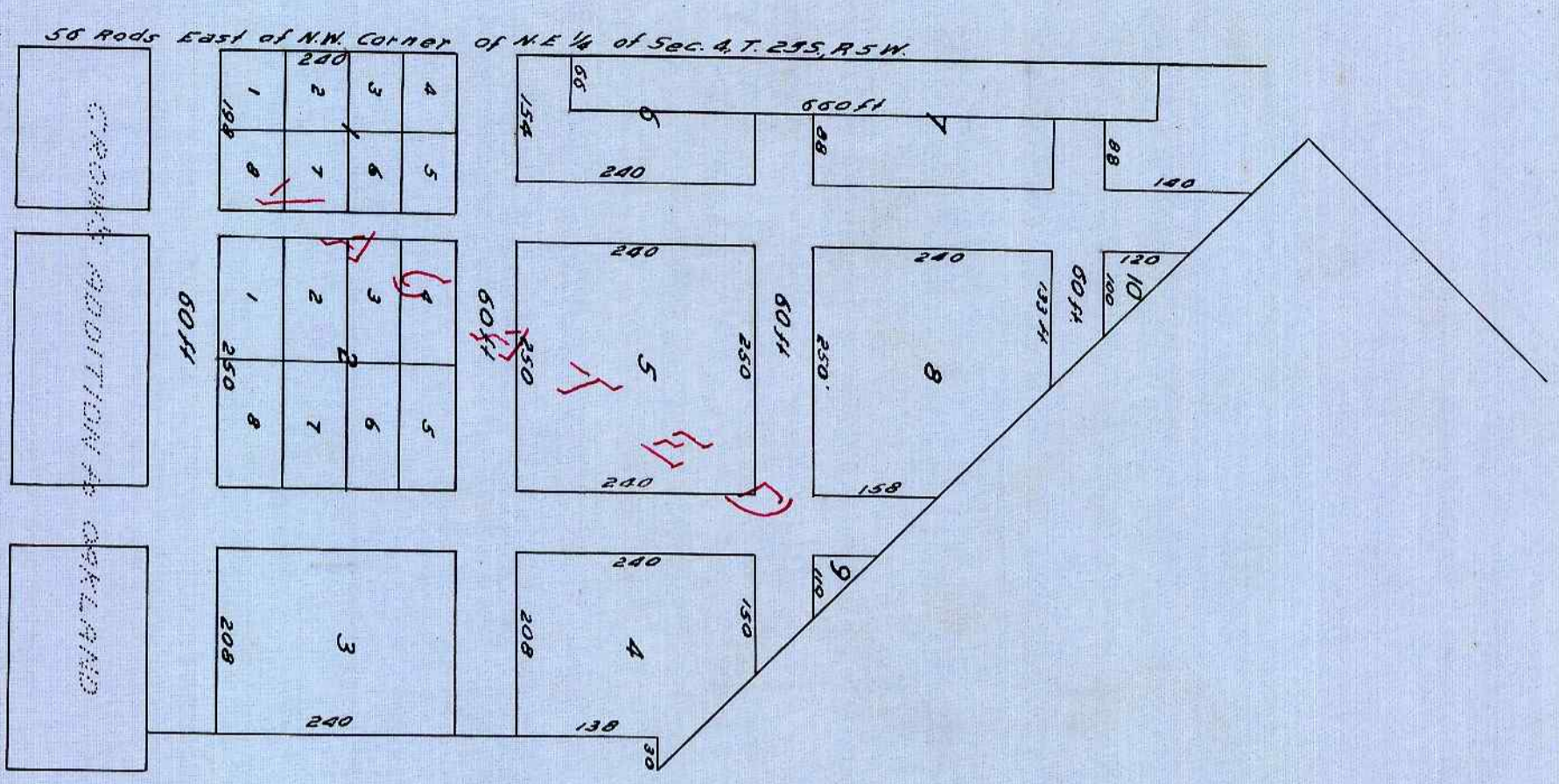
Benjamin Burning
COUNTY SURVEYOR

SUBSCRIBED AND SWORN TO BEFORE ME THIS 15th DAY OF December
1955.

Chas Doerner
COUNTY CLERK

STATE OF OREGON)
COUNTY OF DOUGLAS) SS
I CHAS DOERNER, COUNTY CLERK OF DOUGLAS COUNTY OREGON DO
HEREBY CERTIFY THAT THE FOREGOING COPY OF PLAT HAS BEEN BY ME
COMPARED WITH THE ORIGINAL THEREOF THAT IT IS A TRUE AND CORRECT
COPY THEREOF AND OF THE WHOLE THEREOF AS THE SAME APPEARS ON
FILE IN MY OFFICE AND CUSTODY
WITNESS MY HAND AND OFFICIAL SEAL THIS 15th DAY OF
December 1955.

Chas Doerner
COUNTY CLERK



Platting Order for T-R-533 and March 4 1902. Blocks
1, 2, 3, 4, 5, 6, 7, 8, 9. Streets Unknown in Grid. Addition and
Blocks 1, 2, 3, 4, 5, 6, 7, 8, 9 in Sterling's Add.
SEE C.S. 62/60 FOR B.L. & LOT LOCATIONS.

V02BP25