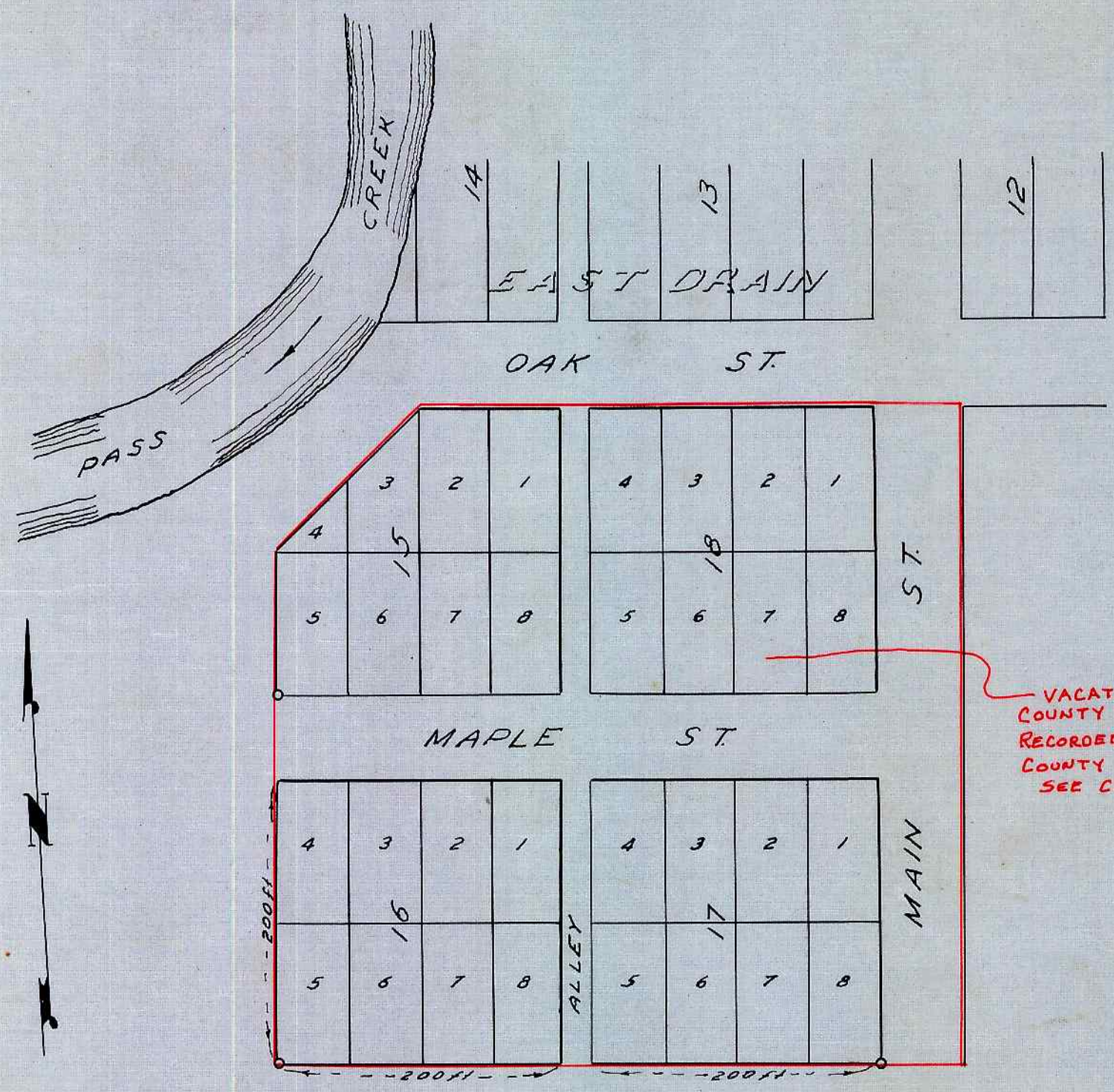


V02BP01

# DRAIN'S 1ST ADDITION TO EAST DRAIN

DOUGLAS COUNTY OREGON  
1908



KNOW ALL MEN BY THESE PRESENTS: THAT WE C. D. DRAIN AND ANNA E. DRAIN, HUSBAND AND WIFE, HAVE SURVEYED AND PLATTED AN ADDITION TO EAST DRAIN, OREGON, SITUATED IN THE WARREN N. GOODELL DONATION CLAIM NO. 40 IN THE NORTH EAST QUARTER OF SECTION 17, TOWNSHIP 22, SOUTH, RANGE 5 WEST, W. M. THE NORTHEAST CORNER OF SAID ADDITION IS 19.78 CHAINS SOUTH AND 18.02 CHAINS WEST OF THE CORNERS TO SECTIONS 8, 9, 16 AND 17, TP. 22, S. R. 5 WEST. SAID ADDITION SHALL BE KNOWN AND DESIGNATED, AS DRAIN'S FIRST ADDITION TO EAST DRAIN, OREGON.

SAID ADDITION CONTAINS FOUR BLOCKS, EACH BLOCK CONTAINING EIGHT LOTS, EACH BLOCK IS 200 FEET SQUARE; LOTS ARE 50 FEET BY 100 FEET; ALLEYS ARE 20 FEET WIDE AND STREETS ARE 60 FEET.

THE ANNEXED PLAT CORRECTLY SHOWS SAID ADDITION, THE BLOCKS AND LOTS DIMENSIONS IN FEET.

NOW THEREFORE, WE C. D. DRAIN AND ANNA E. DRAIN, HIS WIFE HEREBY DEDICATE FOR THE USE OF THE PUBLIC THE STREETS AND ALLEYS DESIGNATED UPON SAID PLAT TO THE FREE USE OF THE PUBLIC SO LONG AS THE SAME ARE USED FOR THE SAME.

IN WITNESS WHEREOF WE HAVE HEREUNTO SET OUR HANDS AND SEALS THIS 7<sup>th</sup> DAY OF JANUARY, A. D. 1909.  
 (SGD) C. D. DRAIN (SEAL)  
 (SGD) ANNA DRAIN (SEAL)

STATE OF OREGON }  
 COUNTY OF DOUGLAS } ss  
 ON THIS 7<sup>th</sup> DAY OF JANUARY, A. D. 1909 PERSONALLY APPEARED C. D. DRAIN AND ANNA E. DRAIN HIS WIFE, WHO EXECUTED THE FOREGOING INSTRUMENT AND THEY EACH ACKNOWLEDGED TO ME THAT THEY EXECUTED THE SAME FREELY AND VOLUNTARILY FOR THE USES AND PURPOSES THEREIN NAMED.

WITNESS MY HAND AND OFFICIAL SEAL THE DAY LAST ABOVE WRITTEN AT MY OFFICE IN DRAIN OREGON.  
 (SGD) IRA WIMBERLY, NOTARY PUBLIC FOR OREGON

FILED NOV. 19, 1908, (SGD) E. H. LENNOX, COUNTY CLERK RECORDED NOV. 19, 1908, VOL. 61 PAGE 55, (SGD) E. H. LENNOX CO. CLERK (SGD) R. C. AGE, DEPUTY

VACATED BY  
 COUNTY COURT MAY 3, 1911  
 RECORDED IN Vol. 9 Pg 198  
 COUNTY CLERK'S RECORDS.  
 SEE C.S. 64/40

STATE OF OREGON }  
 COUNTY OF DOUGLAS } ss  
 I, BEN B. IRVING COUNTY SURVEYOR OF DOUGLAS COUNTY OREGON DO HEREBY CERTIFY THAT THIS COPY OF "DRAIN'S FIRST ADDITION TO EAST DRAIN" IS A TRUE AND CORRECT COPY OF THE ORIGINAL PLAT AS FILED IN THE OFFICE OF THE COUNTY CLERK AND IS MADE IN COMPLIANCE WITH CHAPTER 92 OREGON LAWS 1953 SEC. 92-130.

*Ben B. Irving*  
 COUNTY SURVEYOR

SUBSCRIBED AND SWORN TO BEFORE ME THIS 15<sup>th</sup> DAY OF December 1955

*Chas Doerner*  
 COUNTY CLERK

BLOCKS 200 FT SQ  
 STREETS 60 FT. WIDE  
 ALLEYS 20 " "  
 "O" DESIGNATES IRON BOLTS

NORTH EAST CORNER OF BLOCK 18 IS 19.78 CHAINS SOUTH AND 18.02 CHS WEST OF THE COR. TO SECS. 8, 9, 16 AND 17 T. 22 S., R. 5 W. W. M.

CERTIFICATION  
 I, M. B. GERMOND, HEREBY CERTIFY THAT THE ANNEXED PLAT IS A CORRECT REPRESENTATION OF THE SURVEY MADE BY ME IN 1908 OF THE FIRST ADDITION TO EAST DRAIN DOUGLAS COUNTY OREGON

APPROVED JAN. TERM 1909 (SGD) G. W. WONACOTT, CO. JUDGE  
 APPROVED JANUARY 12<sup>th</sup> 1909 (SGD) C. E. ROBERTS, COUNTY SURVEYOR  
 APPROVED JANUARY 12<sup>th</sup> 1909 (SGD) FRANK L. CALKINS, ASSESSOR

STATE OF OREGON }  
 COUNTY OF DOUGLAS } ss  
 I, CHAS. DOERNER, COUNTY CLERK OF DOUGLAS COUNTY OREGON DO HEREBY CERTIFY THAT THE FOREGOING COPY OF PLAT HAS BEEN BY ME COMPARED WITH THE ORIGINAL THEREOF, THAT IT IS A TRUE AND CORRECT COPY THEREFROM AND OF THE WHOLE THEREOF AS THE SAME APPEARS ON FILE IN MY OFFICE AND CUSTODY.

WITNESS MY HAND AND OFFICIAL SEAL THIS 15<sup>th</sup> DAY OF December 1955.

*Chas Doerner*  
 COUNTY CLERK

V02BP01