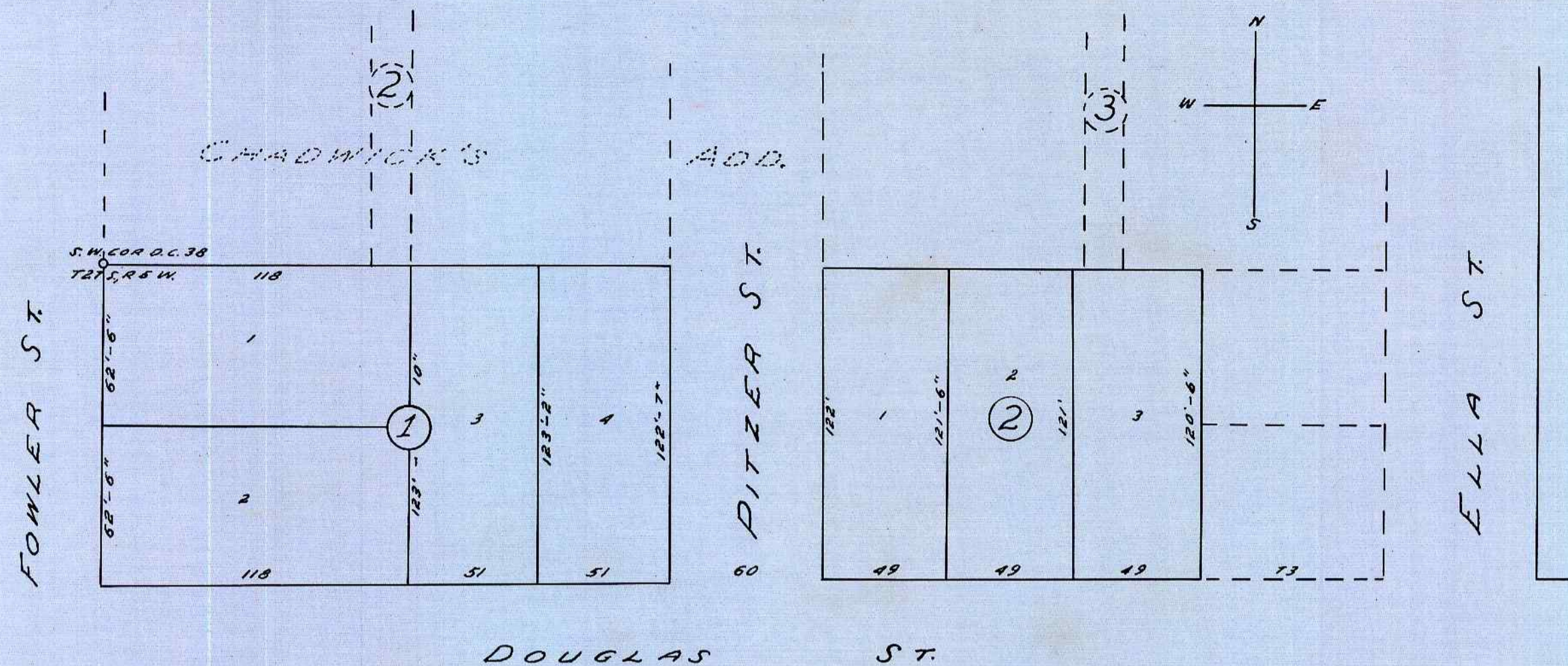


# SUBDIVISION OF THE LONDON TRACT IN ROSEBURG OREGON

SCALE: 1" = 50'

SURVEYED MARCH 25, 1908 BY C. E. ROBERTS, DEPUTY CO. SURVEYOR  
APPROVED MAY 8, 1908  
(SGD) C. E. ROBERTS, CITY SURVEYOR OF ROSEBURG, ORE.  
APPROVED MAY 8, 1908  
(SGD) GEO. W. STALEY, ASSESSOR  
APPROVED MAY TERM, 1908  
(SGD) G. W. WONACOTT, COUNTY JUDGE

FILED MAY 8, 1908  
(SGD) Z. N. AGEE,  
COUNTY CLERK



STATE OF OREGON }  
COUNTY OF DOUGLAS } ss  
I, FRED M. DARBY, COUNTY SURVEYOR OF DOUGLAS COUNTY OREGON  
DO HEREBY CERTIFY THAT THIS COPY OF "SUBDIVISION OF THE LONDON  
TRACT," IS A TRUE AND CORRECT COPY OF THE ORIGINAL PLAT AS FILED  
IN THE OFFICE OF THE COUNTY CLERK AND IS MADE IN COMPLIANCE  
WITH CHAPTER 92 OREGON LAWS 1953, SEC. 92-130.

*Fred M. Darby*  
COUNTY SURVEYOR

SUBSCRIBED AND SWORN TO BEFORE ME THIS 26<sup>th</sup> DAY OF  
March, 1958.

*Chas Doerner*  
COUNTY CLERK

STATE OF OREGON }  
COUNTY OF DOUGLAS } ss  
I, CHAS. DOERNER, COUNTY CLERK OF DOUGLAS COUNTY OREGON, DO  
HEREBY CERTIFY THAT THE FOREGOING COPY OF PLAT HAS BEEN BY ME  
COMPARED WITH THE ORIGINAL THEREOF, THAT IT IS A TRUE AND CORRECT  
COPY THEREFROM AND THE WHOLE THEREOF AS THE SAME APPEARS ON  
FILE IN MY OFFICE AND CUSTODY.

WITNESS MY HAND AND OFFICIAL SEAL THIS 26<sup>th</sup> DAY OF  
March, 1958.

*Chas Doerner*  
COUNTY CLERK