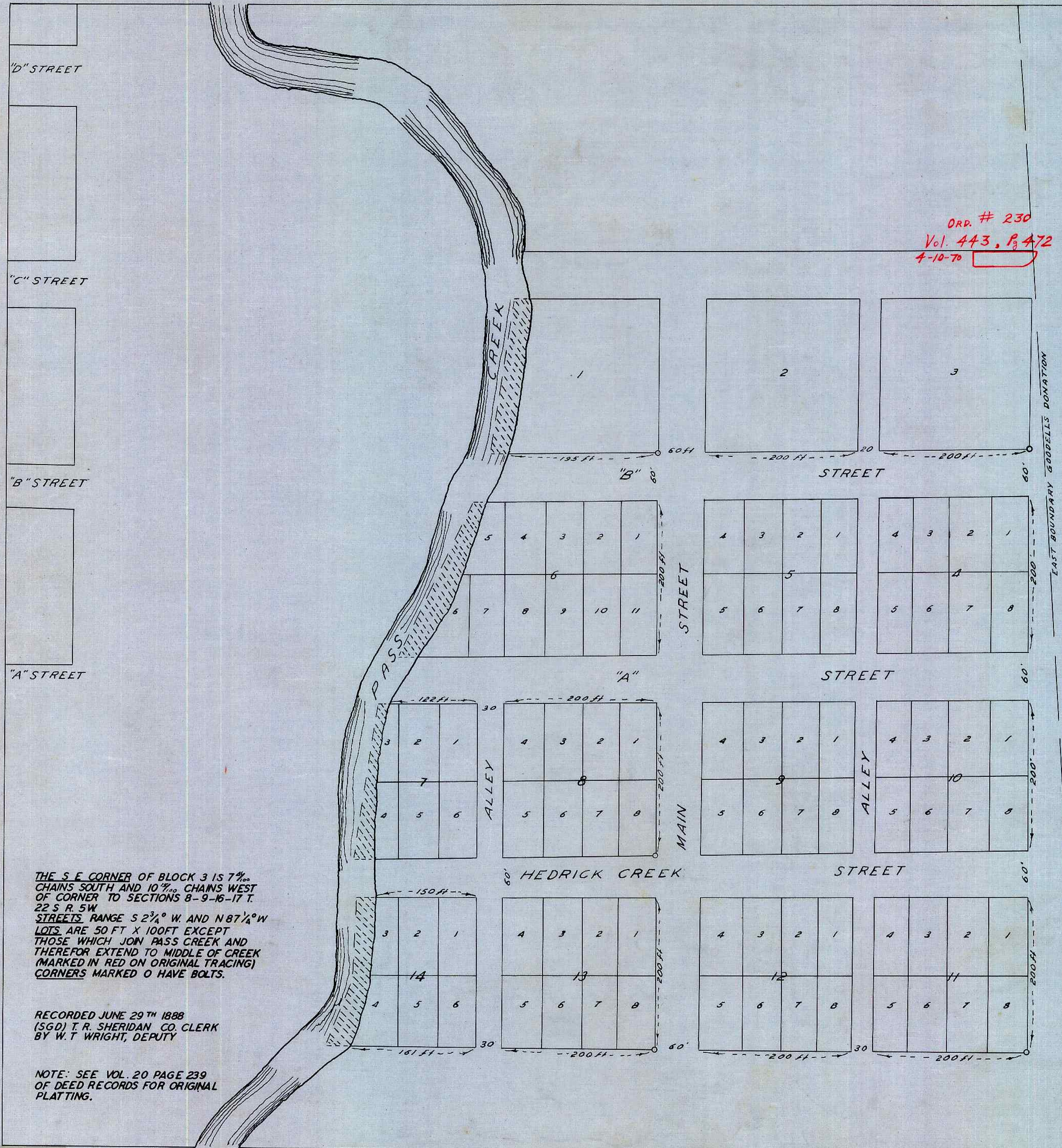


# EAST DRAIN

ORD. # 230  
Vol. 443, P. 472  
4-10-70



THE S.E. CORNER OF BLOCK 3 IS 7 $\frac{1}{100}$  CHAINS SOUTH AND 10 $\frac{1}{100}$  CHAINS WEST OF CORNER TO SECTIONS 8-9-16-17 T. 22 S. R. 5W. STREETS RANGE S 2 $\frac{3}{4}$ ° W. AND N 87 $\frac{1}{4}$ ° W. LOTS ARE 50 FT X 100 FT EXCEPT THOSE WHICH JOIN PASS CREEK AND THEREFOR EXTEND TO MIDDLE OF CREEK (MARKED IN RED ON ORIGINAL TRACING) CORNERS MARKED O HAVE BOLTS.

RECORDED JUNE 29<sup>TH</sup> 1888  
(SGD) T. R. SHERIDAN CO. CLERK  
BY W. T. WRIGHT, DEPUTY

NOTE: SEE VOL. 20 PAGE 239  
OF DEED RECORDS FOR ORIGINAL  
PLATTING.

STATE OF OREGON }  
COUNTY OF DOUGLAS }  
I, BEN B. IRVING COUNTY SURVEYOR OF DOUGLAS COUNTY OREGON DO HEREBY CERTIFY THAT THIS COPY OF "EAST DRAIN" IS A TRUE AND CORRECT COPY OF THE ORIGINAL AS FILED IN THE OFFICE OF THE COUNTY CLERK AND IS MADE IN COMPLIANCE WITH CHAPTER 92 OREGON LAWS 1953 SEC. 92-130.

*Ben B. Irving*  
COUNTY SURVEYOR

SUBSCRIBED AND SWORN TO BEFORE ME THIS 15<sup>TH</sup> DAY OF December 1955.

*Chas Doerner*  
COUNTY CLERK

STATE OF OREGON }  
COUNTY OF DOUGLAS }  
I, CHAS DOERNER, COUNTY CLERK OF DOUGLAS COUNTY OREGON DO HEREBY CERTIFY THAT THE FOREGOING COPY OF PLAT HAS BEEN BY ME COMPARED WITH THE ORIGINAL THEREOF, THAT IT IS A TRUE AND CORRECT COPY THEREFROM AND OF THE WHOLE THEREOF AS THE SAME APPEARS ON FILE IN MY OFFICE AND CUSTODY. WITNESS MY HAND AND OFFICIAL SEAL THIS 15 DAY OF December 1955.

*Chas Doerner*  
COUNTY CLERK.