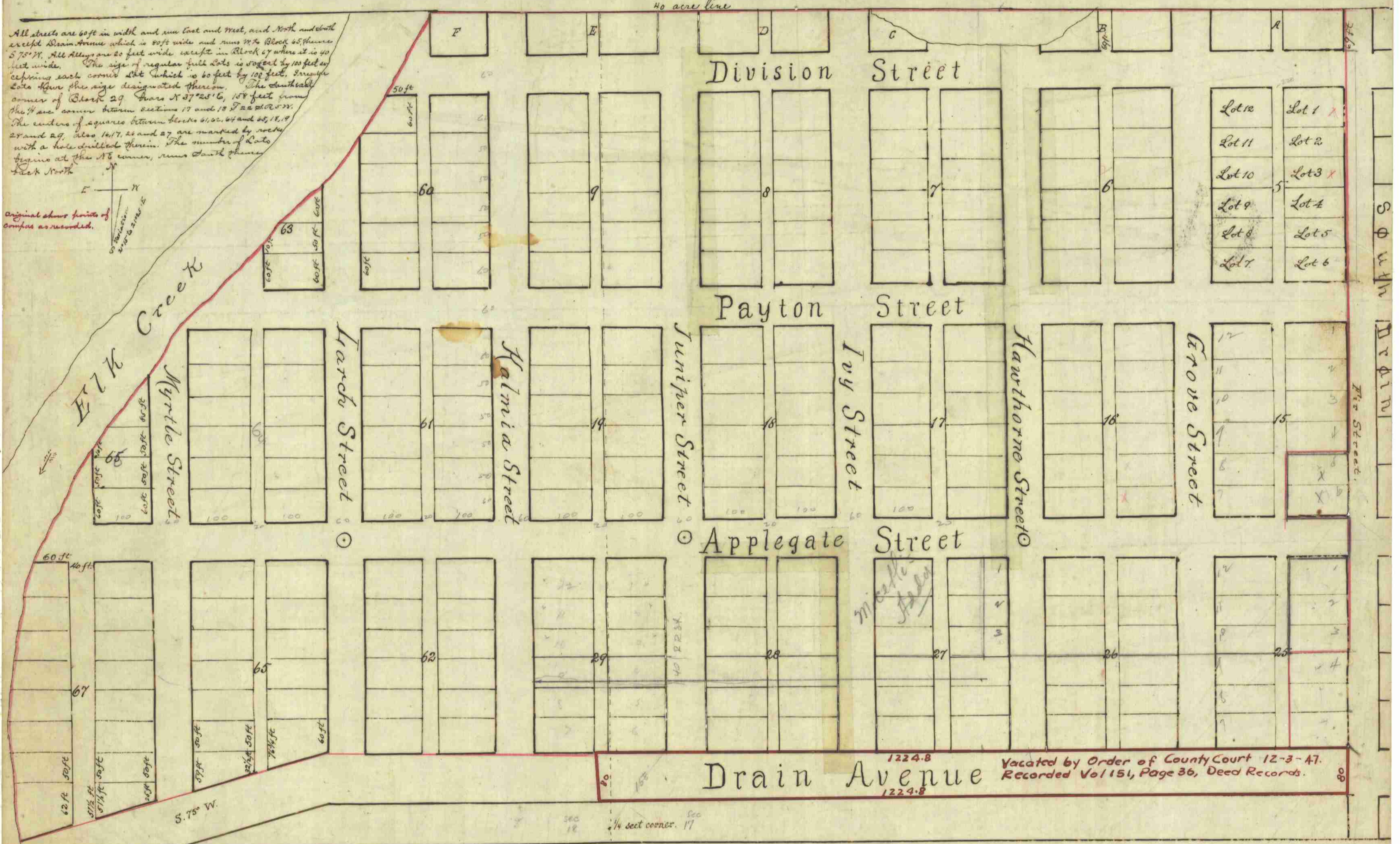
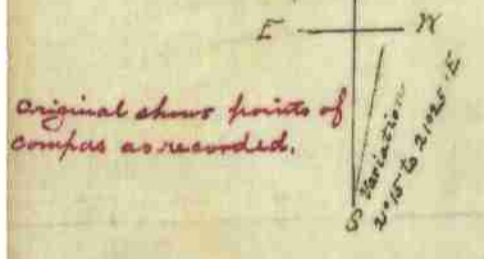


All streets are 60 ft in width and run East and West, and North and South except Drain Avenue which is 80 ft wide and runs N 75° W to Block 65 thence S 75° W. All Alleys are 20 feet wide except in Block 27 where it is 40 feet wide. The size of regular full lots is 60 feet by 100 feet and each corner lot which is 60 feet by 100 feet. Through lots have the size designated thereon. The southeast corner of Block 29 bears N 37° 25' 6" 158 feet from the NE corner between sections 17 and 18 T 22 S R 5 W. The centers of squares between blocks 61, 62, 63 and 65, 18, 19, 27 and 29, also 16, 17, 26 and 27 are marked by rocks with a hole drilled therein. The number of lots begins at the NE corner, runs South thence back North.



Dedication recorded in Vol 22, Page 567 and 568 of Records of Deeds

Filed and recorded April 19th 1890
 G. A. Taylor County Clerk
 By E. W. Benson Deputy

COLTON'S Addition to DRAIN.

Vacating order. Vol. 7. page. 419. Wed. May 8. 1901.
 all of townsite.

1224-8
 Vacated by Order of County Court 12-3-07.
 Recorded Vol 151, Page 36, Deed Records.
 1224-8