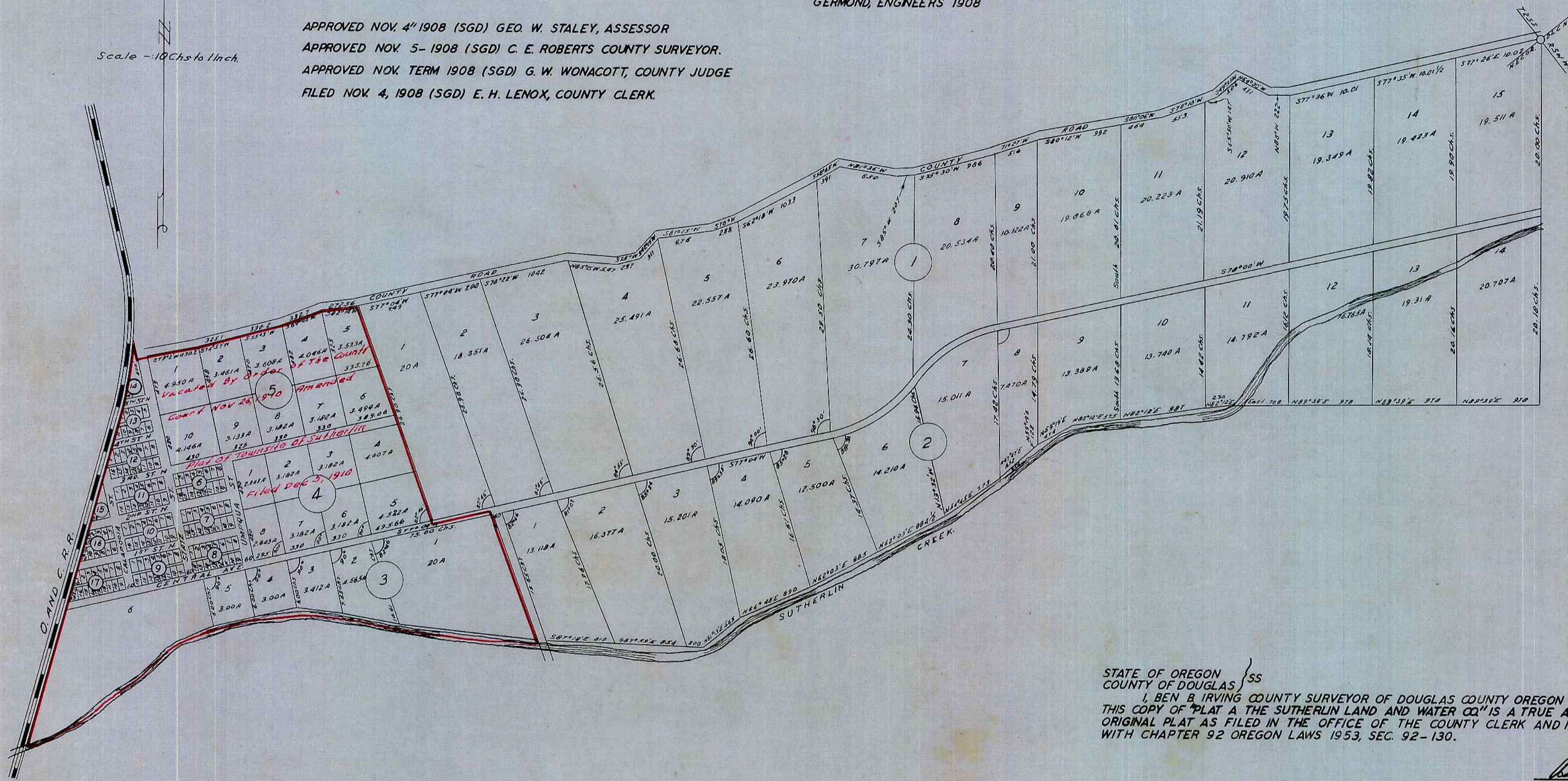


PLAT -A- THE SUTHERLIN LAND AND WATER CO. DOUGLAS COUNTY OREGON

SURVEYED AND PLATTED BY ROBERTS AND
GERMOND, ENGINEERS 1908

APPROVED NOV. 4th 1908 (SGD) GEO. W. STALEY, ASSESSOR
APPROVED NOV. 5- 1908 (SGD) C. E. ROBERTS COUNTY SURVEYOR.
APPROVED NOV. TERM 1908 (SGD) G. W. WONACOTT, COUNTY JUDGE
FILED NOV. 4, 1908 (SGD) E. H. LENOX, COUNTY CLERK

Scale - 10 Chs to 1 Inch.



STATE OF OREGON }
COUNTY OF DOUGLAS } ss

I, CHAS. DOERNER, COUNTY CLERK OF DOUGLAS COUNTY OREGON DO HEREBY CERTIFY THAT THE FOREGOING COPY OF PLAT HAS BEEN BY ME COMPARED WITH THE ORIGINAL THEREOF THAT IT IS A TRUE AND CORRECT COPY THEREFROM AND OF THE WHOLE THEREOF AS THE SAME APPEARS ON FILE IN MY OFFICE AND CUSTODY.

WITNESS MY HAND AND OFFICIAL SEAL THIS 26 DAY OF January 1955

Chas Doerner
COUNTY CLERK

STATE OF OREGON }
COUNTY OF DOUGLAS } ss

I, BEN B IRVING COUNTY SURVEYOR OF DOUGLAS COUNTY OREGON DO HEREBY CERTIFY THAT THIS COPY OF "PLAT A THE SUTHERLIN LAND AND WATER CO" IS A TRUE AND CORRECT COPY OF THE ORIGINAL PLAT AS FILED IN THE OFFICE OF THE COUNTY CLERK AND IS MADE IN COMPLIANCE WITH CHAPTER 92 OREGON LAWS 1953, SEC. 92-130.

Ben B Irving
COUNTY SURVEYOR

SUBSCRIBED AND SWORN TO BEFORE ME THIS 26 DAY OF January 1955.

Chas Doerner
COUNTY CLERK