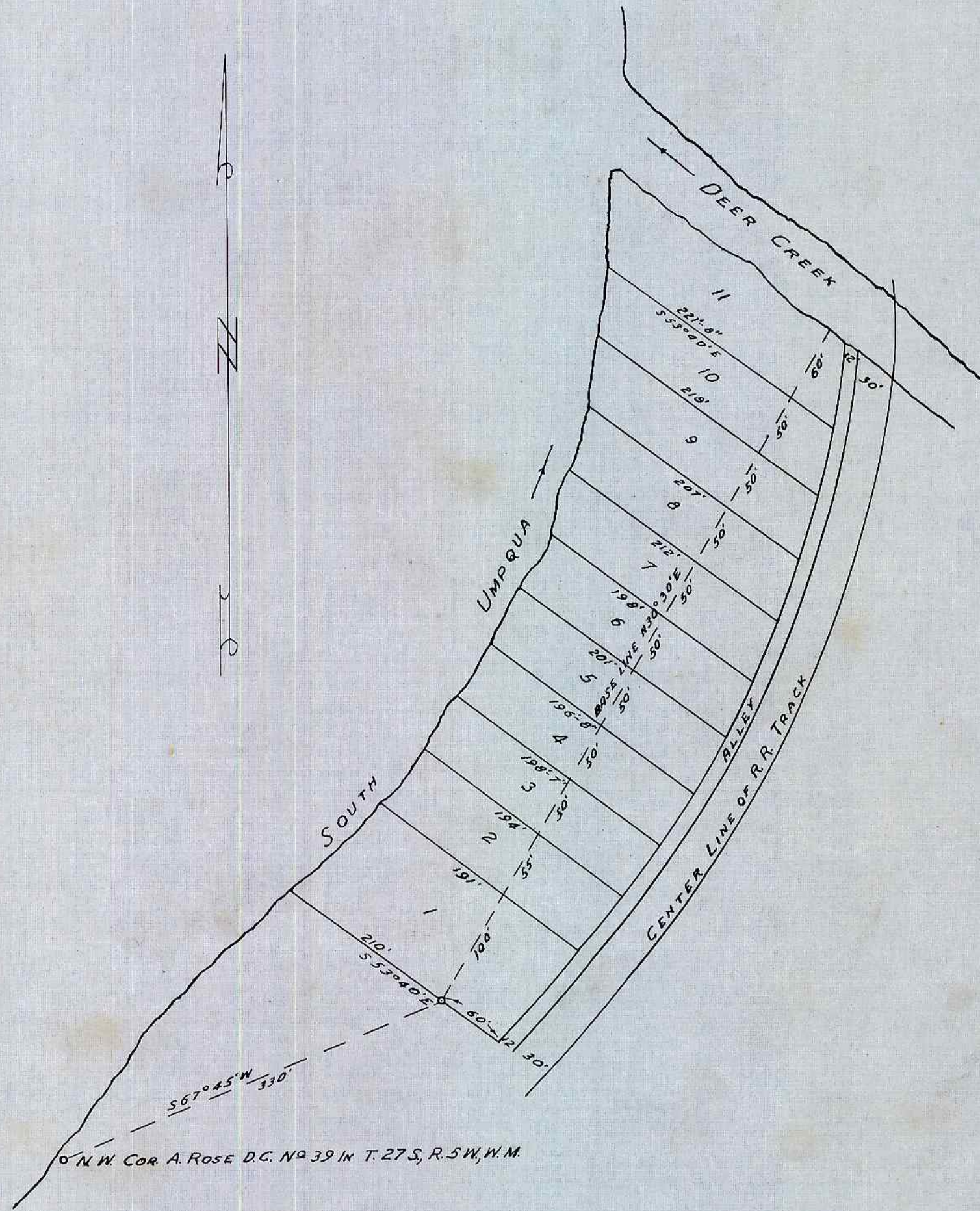


SECOND RAILROAD ADDITION TO ROSEBURG



STATE OF OREGON }
 COUNTY OF DOUGLAS } SS
 I, BEN B. IRVING, COUNTY SURVEYOR OF DOUGLAS COUNTY OREGON DO HEREBY CERTIFY THAT THIS COPY OF "SECOND RAILROAD ADDITION TO ROSEBURG" IS A TRUE AND CORRECT COPY OF THE ORIGINAL PLAT AS FILED IN THE OFFICE OF THE COUNTY CLERK AND IS MADE IN COMPLIANCE WITH CHAPTER 92 OREGON LAWS 1953, SEC. 92-130.

Ben B. Irving
 COUNTY SURVEYOR

SUBSCRIBED AND SWORN TO BEFORE ME THIS 29th DAY OF December 1954

Chas. Doerner
 COUNTY CLERK

SCALE: 1 INCH = 100 FEET
 SURVEYED NOV. 26 - 1904, BY C. E. ROBERTS, CO. SURVEYOR.
 FILED NOV. 29th 1904 BY REQUEST OF S. HAMILTON, (SGD) Z. N. AGEE, COUNTY CLERK

STATE OF OREGON }
 COUNTY OF DOUGLAS } SS
 I, CHAS. DOERNER, COUNTY CLERK OF DOUGLAS COUNTY OREGON DO HEREBY CERTIFY THAT THE FOREGOING COPY OF PLAT HAS BEEN BY ME COMPARED WITH THE ORIGINAL THEREOF THAT IT IS A TRUE AND CORRECT COPY THEREFROM AND OF THE WHOLE THEREOF AS THE SAME APPEARS ON FILE IN MY OFFICE AND CUSTODY.
 WITNESS MY HAND AND OFFICIAL SEAL THIS 29th DAY OF December 1954.

Chas. Doerner
 COUNTY CLERK