

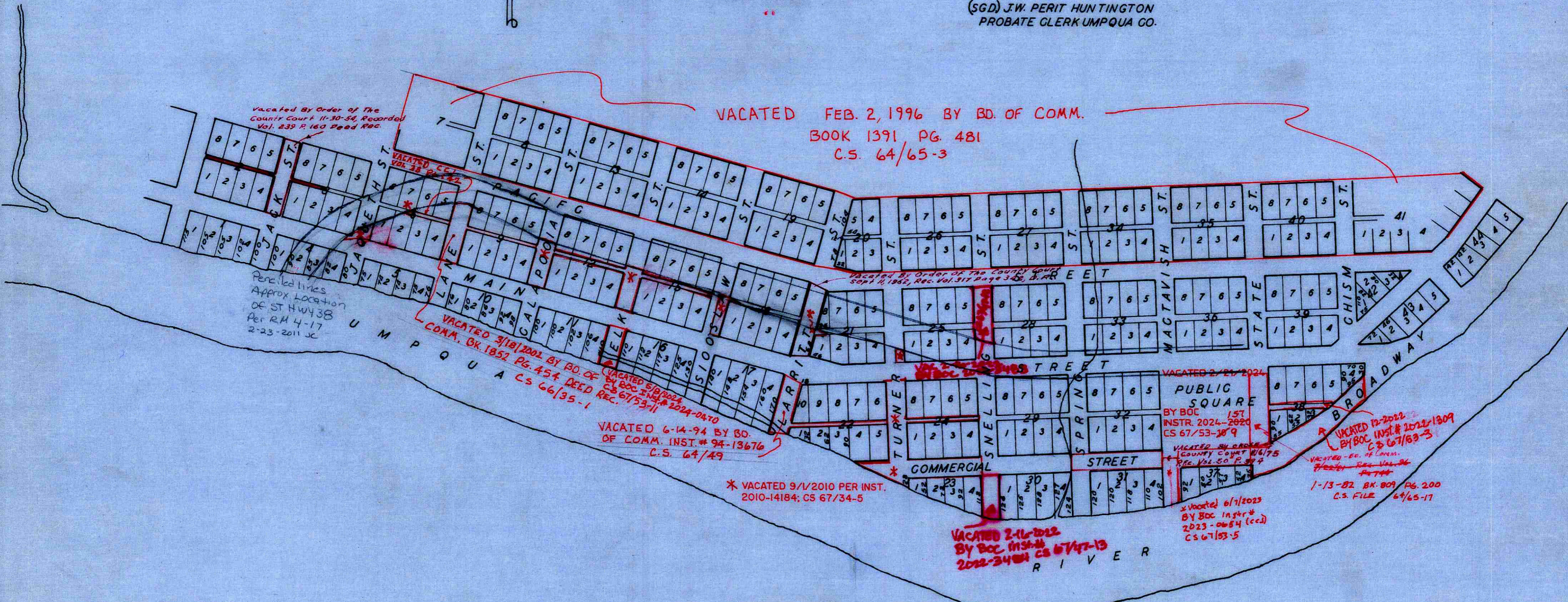
NOTE:
THE LOTS ARE 50 FEET BY 100 FEET
WITH AN ALLEY 10 FT. WIDE AT THE BACK
THE STREETS ARE 50 FEET WIDE.



I, LEVI SCOTT, DO SOLEMNLY SWEAR AND ACKNOWLEDGE THAT THE WITHIN MAP IS A TRUE DESCRIPTION OF THE SAID TOWN OF SCOTTSBURGH OF WHICH I AM THE PROPRIETOR TO THE BEST OF MY KNOWLEDGE AND BELIEF.
(SGD) LEVI SCOTT
SWORN AND SUBSCRIBED BEFORE ME THIS 21ST DAY OF SEPTEMBER A.D. (ILLEGIBLE)
(SGD) J.W. PERIT HUNTINGTON
PROBATE CLERK UMPQUA CO. O.T.
RECORDED APRIL 2ND 1890
G.A. TAYLOR COUNTY CLERK
(SGD) BY F.W. BENSON DEPUTY

PLAN
OF
SCOTTSBURGH
UMPQUA VALLEY
1851
RICHARD W. LARRITT
SURVEYOR

FILED FOR RECORD IN THE OFFICE OF THE PROBATE CLERK OF UMPQUA COUNTY O.T.
THIS 21ST DAY OF SEPT. A.D. 1852.
(SGD) J.W. PERIT HUNTINGTON
PROBATE CLERK UMPQUA CO.



STATE OF OREGON }
COUNTY OF DOUGLAS } SS
I, CHAS. DOERNER, COUNTY CLERK OF DOUGLAS COUNTY OREGON DO HEREBY CERTIFY THAT THE FOREGOING COPY OF PLAT HAS BEEN BY ME COMPARED WITH THE ORIGINAL THEREOF THAT IT IS A TRUE AND CORRECT COPY THEREFROM AND OF THE WHOLE THEREOF AS THE SAME APPEARS ON FILE IN MY OFFICE AND CUSTODY.
WITNESS MY HAND AND OFFICIAL SEAL THIS 13TH DAY OF Dec. 1954

Chas Doerner
COUNTY CLERK

STATE OF OREGON }
COUNTY OF DOUGLAS } SS
I, BEN B. IRVING, COUNTY SURVEYOR OF DOUGLAS COUNTY OREGON DO HEREBY CERTIFY THAT THIS COPY OF SCOTTSBURGH IS A TRUE AND CORRECT COPY OF THE ORIGINAL PLAT AS FILED IN THE OFFICE OF THE COUNTY CLERK AND IS MADE IN COMPLIANCE WITH CHAPTER 92, OREGON LAWS 1953 SEC. 92.130

SUBSCRIBED AND SWORN TO BEFORE ME THIS 13TH DAY OF Dec. 1954

Ben B. Irving
COUNTY SURVEYOR
Chas Doerner
COUNTY CLERK