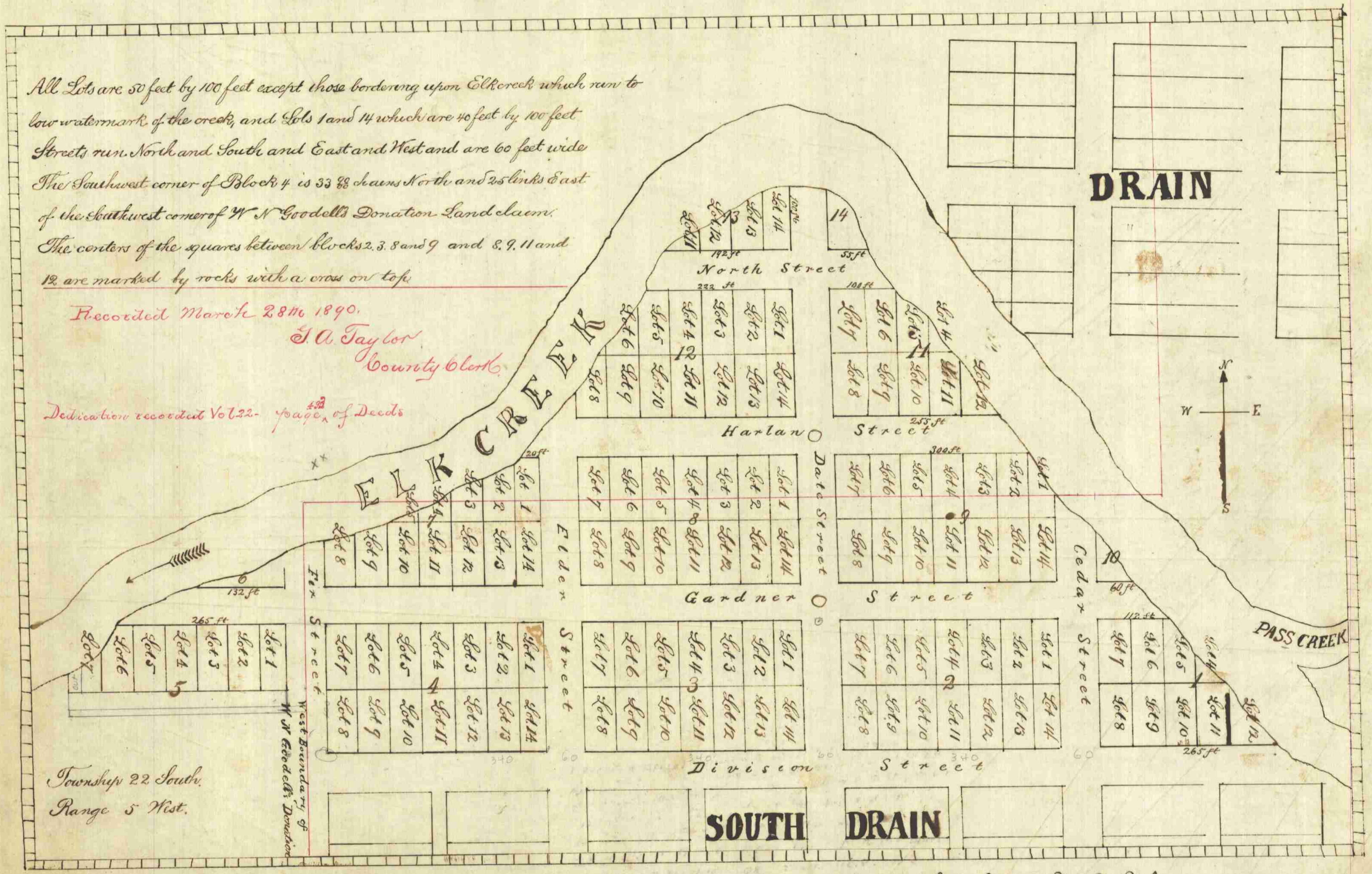


1-3 Vol 10-26-2007  
 Per Clerk's Office  
 Records

All Lots are 50 feet by 100 feet except those bordering upon Elk Creek which run to low watermark of the creek, and Lots 1 and 14 which are 40 feet by 100 feet  
 Streets run North and South and East and West and are 60 feet wide  
 The Southwest corner of Block 4 is 33 88 chains North and 25 links East of the Southwest corner of W N Goodell's Donation Land claim.  
 The centers of the squares between blocks 2, 3, 8 and 9 and 8, 9, 11 and 12 are marked by rocks with a cross on top

Recorded March 28<sup>th</sup> 1890.  
 J. A. Taylor  
 County Clerk

Dedication recorded Vol 22- page 433 of Deeds



Township 22 South,  
 Range 5 West.

**GARDNER'S** Addition to **DRAIN**.

Vacating Order. Vol. 8. p. 36. March 3. 1905.  
 "all Townsite"