

THE TOWN OF MYRTLE CREEK DOUGLAS COUNTY OREGON

COMMENCING 274 FEET W. AND 30 FEET S. OF THE CORNER FOR SECTIONS 21, 22, 27, 28 T. 29 S. R. 5 W. SET STONE NE. CORNER OF BLOCK NO. 15 THENCE S. 43° 05' W. 995 FEET TO THE SE. CORNER OF BLOCK NO. 5 SET STONE THENCE S. 46° 55' EAST 260 FEET TO SE. CORNER OF BLOCK NO. 6 OLD STONE CORNER SET BY D. W. RANSOM.

RECORDED AT REQUEST OF JOHN HALL JUNE 15, 1895
(SGD) F. W. BENSON, CO. CLERK
BY H. R. BENSON, DEPUTY

STATE OF OREGON }
COUNTY OF DOUGLAS } SS
I, BEN B. IRVING, COUNTY SURVEYOR OF DOUGLAS COUNTY OREGON DO HEREBY CERTIFY THAT THIS COPY OF "THE TOWN OF MYRTLE CREEK" IS A TRUE AND CORRECT COPY OF THE ORIGINAL PLAT AS FILED IN THE OFFICE OF THE COUNTY CLERK AND IS MADE IN COMPLIANCE WITH CHAPTER 92, OREGON LAW 1953, SEC. 92-130.

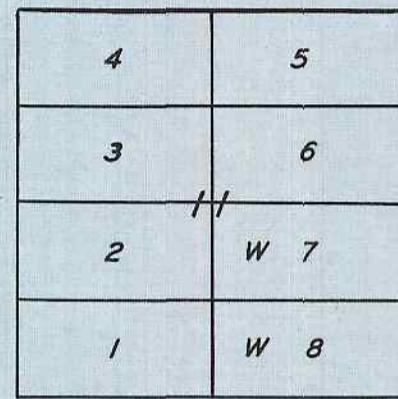
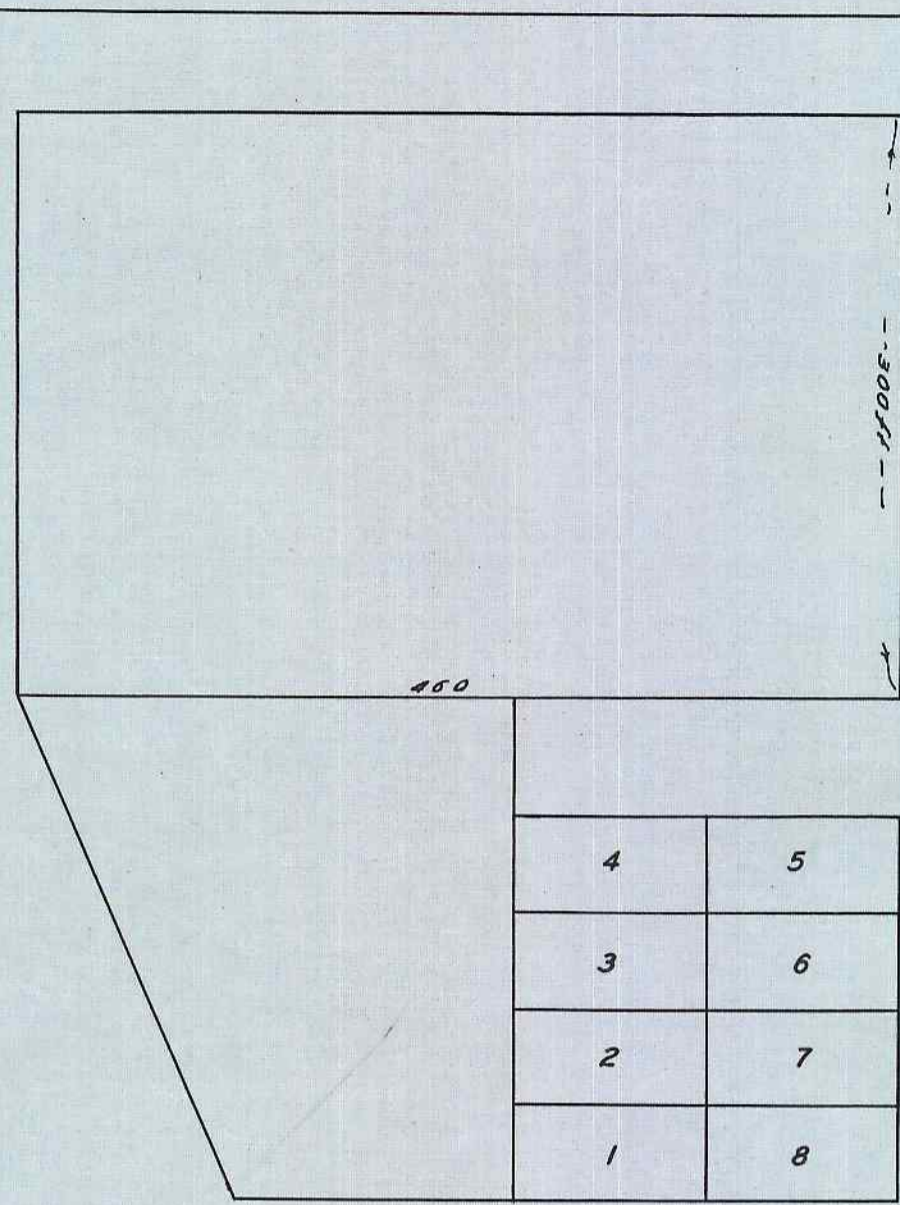
Ben B. Irving
COUNTY SURVEYOR

SUBSCRIBED AND SWORN TO BEFORE ME THIS 2nd DAY OF December 1954.

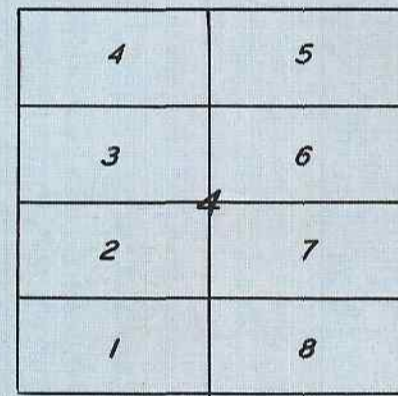
Chas Doerner
COUNTY CLERK

STATE OF OREGON }
COUNTY OF DOUGLAS } SS
I, CHAS. DOERNER, COUNTY CLERK OF DOUGLAS COUNTY OREGON DO HEREBY CERTIFY THAT THE FOREGOING COPY OF PLAT HAS BEEN BY ME COMPARED WITH THE ORIGINAL THEREOF THAT IT IS A TRUE AND CORRECT COPY THEREFROM AND OF THE WHOLE THEREOF AS THE SAME APPEARS ON FILE IN MY OFFICE AND CUSTODY.
WITNESS MY HAND AND OFFICIAL SEAL THIS 2nd DAY OF December 1954.

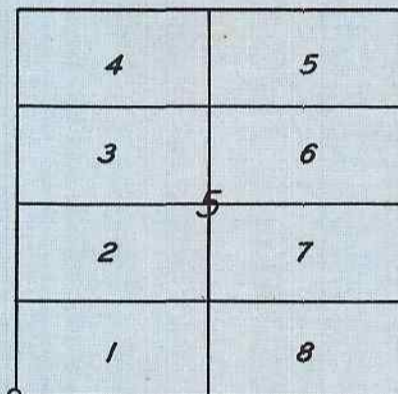
Chas Doerner
COUNTY CLERK



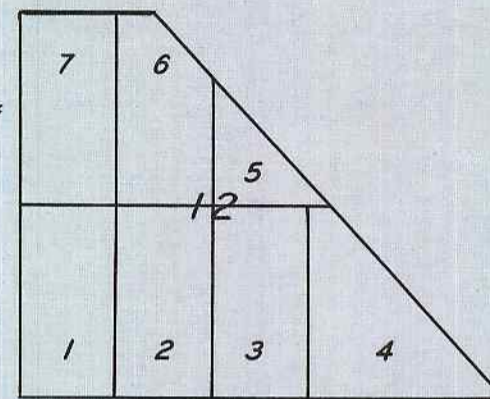
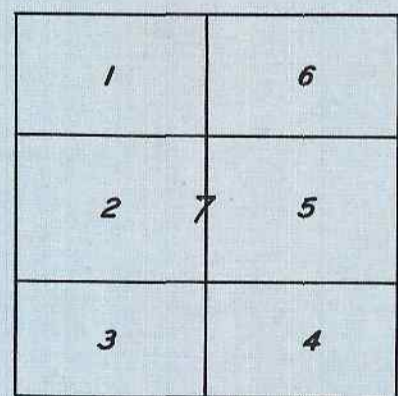
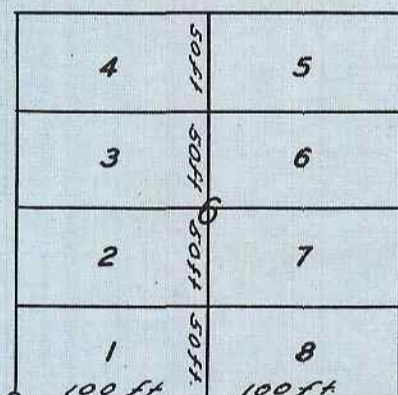
FOURTH



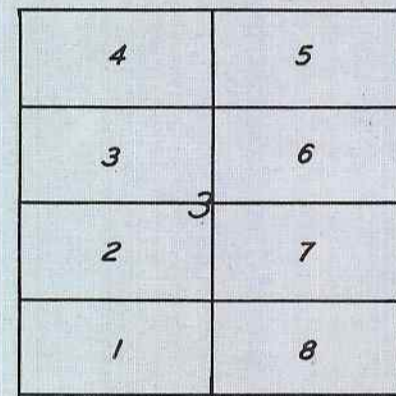
THIRD



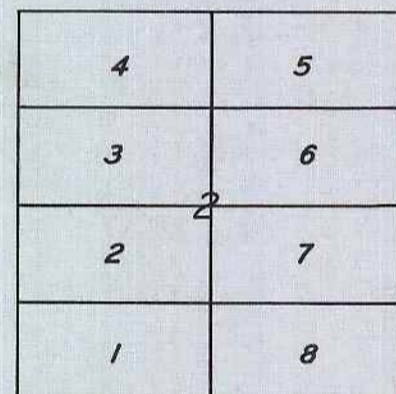
SECOND



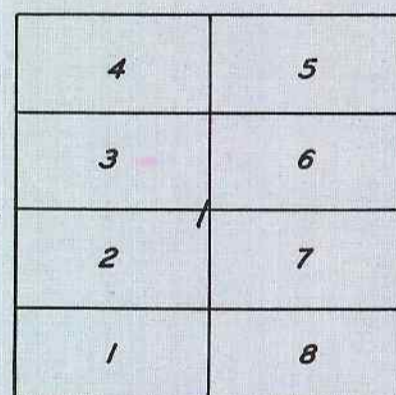
ST.



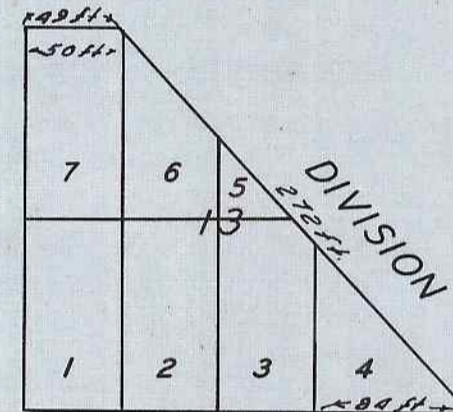
ST



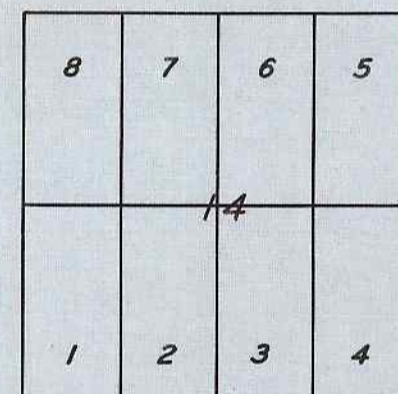
PLEASANT



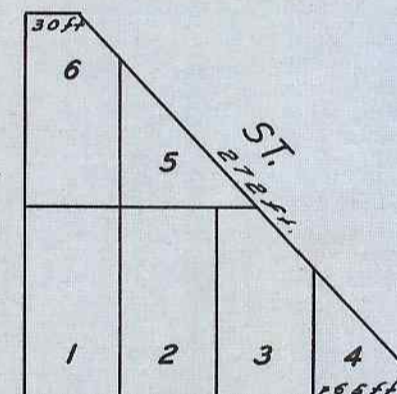
ST.



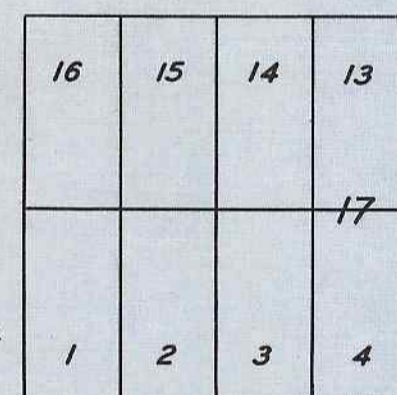
DIVISION



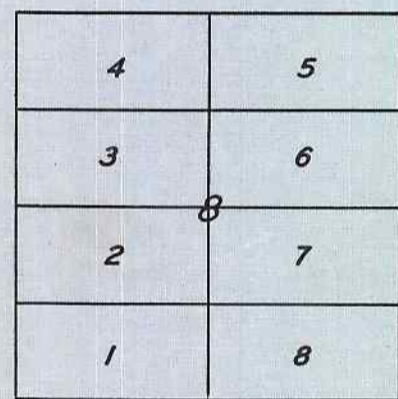
ST.



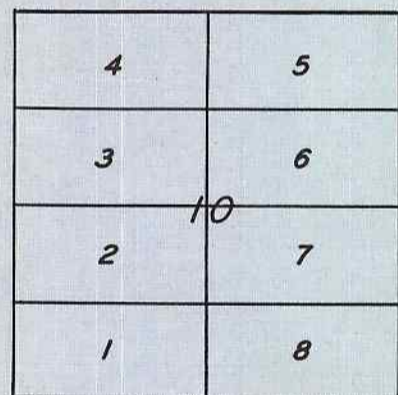
HALL



ST.



MAIN STREET



ST.

OAK

ST.