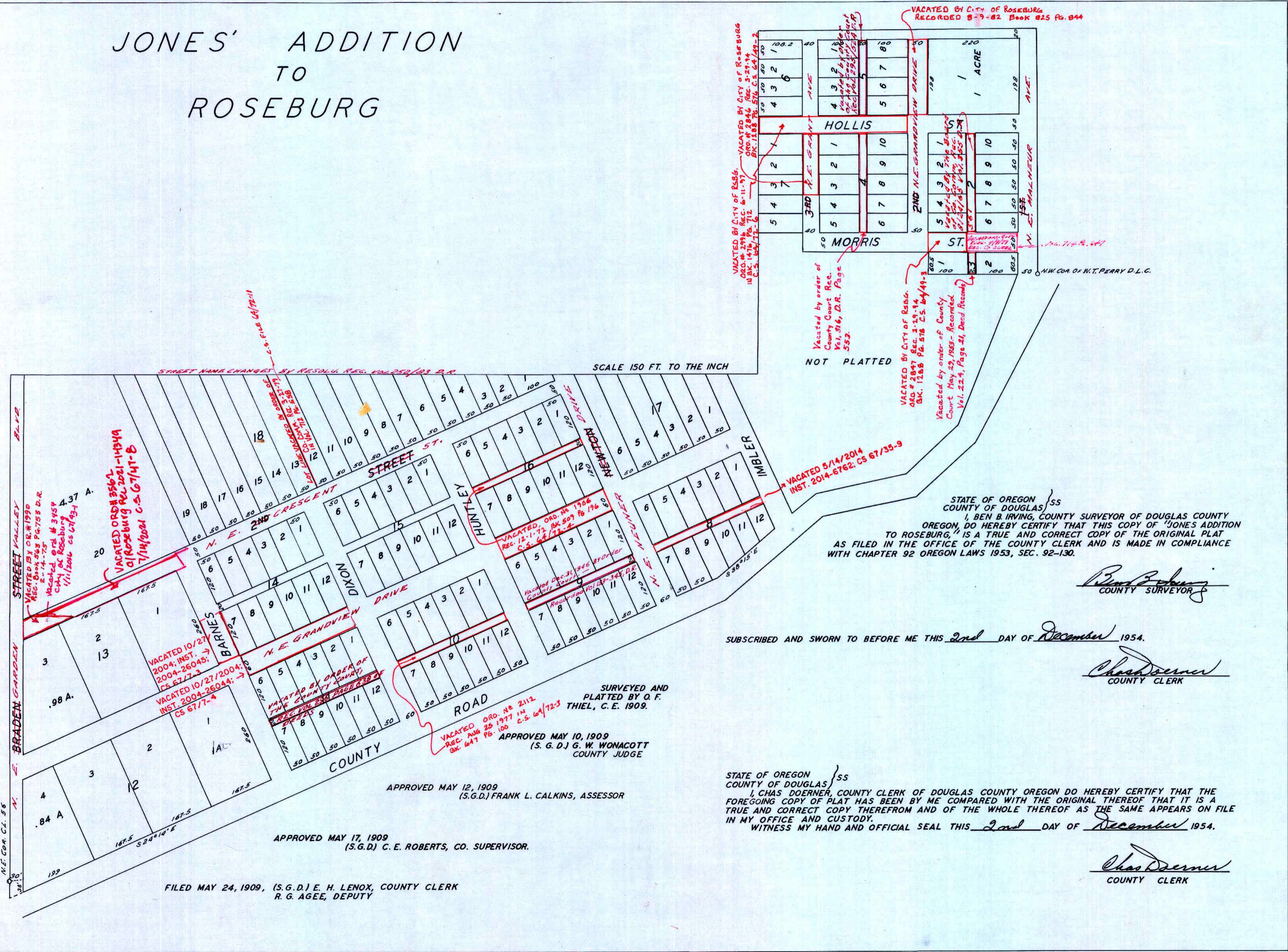


JONES' ADDITION TO ROSEBURG

SCALE 150 FT. TO THE INCH



STATE OF OREGON }
 COUNTY OF DOUGLAS } ss
 I, BEN B. IRVING, COUNTY SURVEYOR OF DOUGLAS COUNTY OREGON, DO HEREBY CERTIFY THAT THIS COPY OF "JONES' ADDITION TO ROSEBURG," IS A TRUE AND CORRECT COPY OF THE ORIGINAL PLAT AS FILED IN THE OFFICE OF THE COUNTY CLERK AND IS MADE IN COMPLIANCE WITH CHAPTER 92 OREGON LAWS 1953, SEC. 92-130.

Ben B. Irving
 COUNTY SURVEYOR

SUBSCRIBED AND SWORN TO BEFORE ME THIS 2nd DAY OF December 1954.

Chas Doerner
 COUNTY CLERK

SURVEYED AND PLATTED BY O. F. THIEL, C. E. 1909.

APPROVED MAY 10, 1909
 (S. G. D.) G. W. WONACOTT
 COUNTY JUDGE

APPROVED MAY 12, 1909
 (S.G.D.) FRANK L. CALKINS, ASSESSOR

APPROVED MAY 17, 1909
 (S.G.D.) C. E. ROBERTS, CO. SUPERVISOR.

FILED MAY 24, 1909, (S.G.D.) E. H. LENOX, COUNTY CLERK
 R. G. AGEE, DEPUTY

STATE OF OREGON }
 COUNTY OF DOUGLAS } ss
 I, CHAS DOERNER, COUNTY CLERK OF DOUGLAS COUNTY OREGON DO HEREBY CERTIFY THAT THE FOREGOING COPY OF PLAT HAS BEEN BY ME COMPARED WITH THE ORIGINAL THEREOF THAT IT IS A TRUE AND CORRECT COPY THEREFROM AND OF THE WHOLE THEREOF AS THE SAME APPEARS ON FILE IN MY OFFICE AND CUSTODY.
 WITNESS MY HAND AND OFFICIAL SEAL THIS 2nd DAY OF December 1954.

Chas Doerner
 COUNTY CLERK