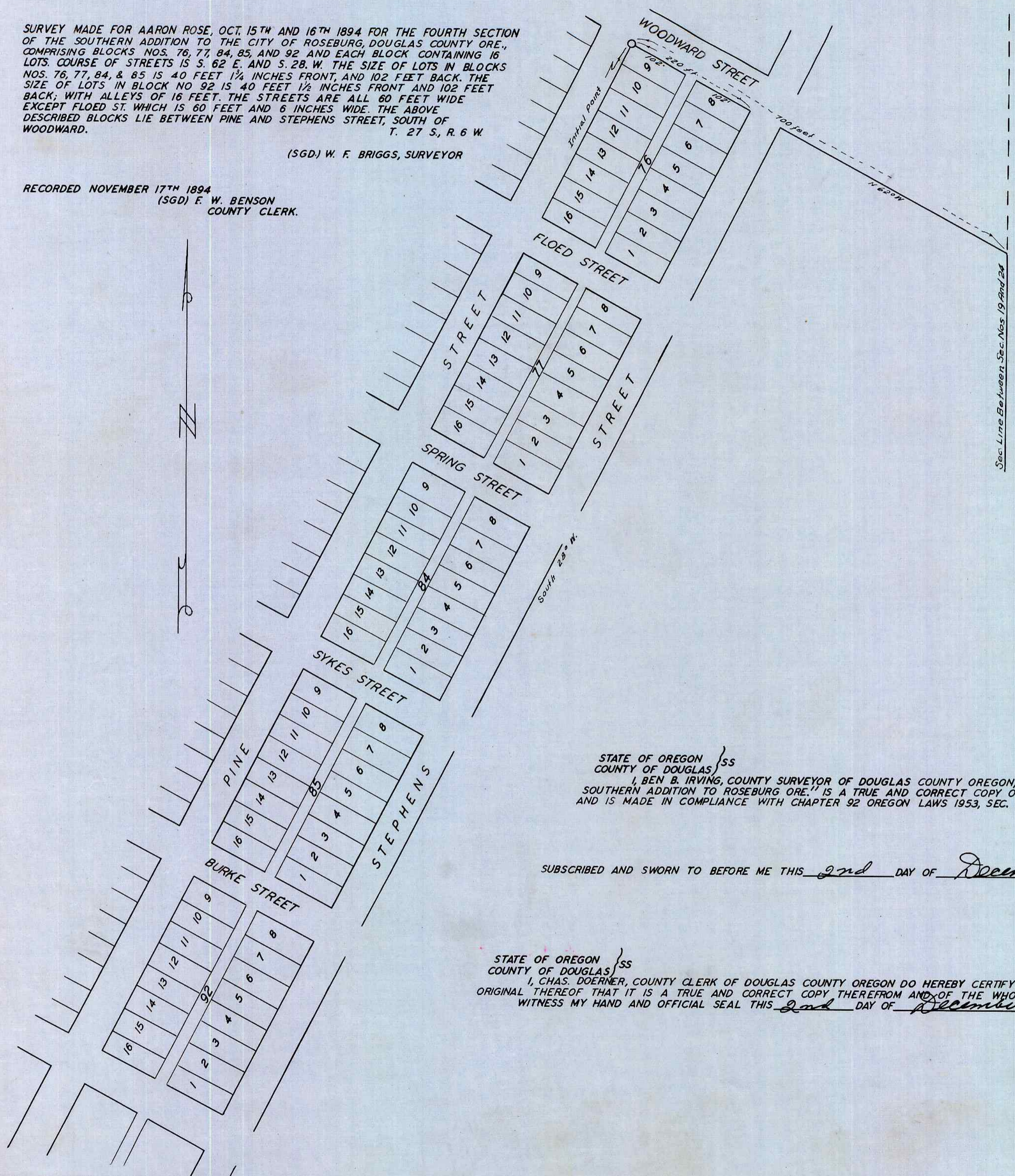


FOURTH SECTION OF THE SOUTHERN ADDITION TO ROSEBURG ORE.

SURVEY MADE FOR AARON ROSE, OCT. 15TH AND 16TH 1894 FOR THE FOURTH SECTION OF THE SOUTHERN ADDITION TO THE CITY OF ROSEBURG, DOUGLAS COUNTY ORE., COMPRISING BLOCKS NOS. 76, 77, 84, 85, AND 92 AND EACH BLOCK CONTAINING 16 LOTS. COURSE OF STREETS IS S. 62° E. AND S. 28° W. THE SIZE OF LOTS IN BLOCKS NOS. 76, 77, 84, & 85 IS 40 FEET 1 1/4 INCHES FRONT, AND 102 FEET BACK. THE SIZE OF LOTS IN BLOCK NO. 92 IS 40 FEET 1 1/2 INCHES FRONT AND 102 FEET BACK, WITH ALLEYS OF 16 FEET. THE STREETS ARE ALL 60 FEET WIDE EXCEPT FLOED ST. WHICH IS 60 FEET AND 6 INCHES WIDE. THE ABOVE DESCRIBED BLOCKS LIE BETWEEN PINE AND STEPHENS STREET, SOUTH OF WOODWARD.

(SGD) W. F. BRIGGS, SURVEYOR

RECORDED NOVEMBER 17TH 1894
(SGD) F. W. BENSON
COUNTY CLERK.



STATE OF OREGON }
COUNTY OF DOUGLAS } ss
I, BEN B. IRVING, COUNTY SURVEYOR OF DOUGLAS COUNTY OREGON, DO HEREBY CERTIFY THAT THIS COPY OF "FOURTH SECTION OF THE SOUTHERN ADDITION TO ROSEBURG ORE." IS A TRUE AND CORRECT COPY OF THE ORIGINAL PLAT AS FILED IN THE OFFICE OF THE COUNTY CLERK AND IS MADE IN COMPLIANCE WITH CHAPTER 92 OREGON LAWS 1953, SEC. 92-130.

Ben B. Irving
COUNTY SURVEYOR

SUBSCRIBED AND SWORN TO BEFORE ME THIS 2nd DAY OF December 1954.

STATE OF OREGON }
COUNTY OF DOUGLAS } ss
I, CHAS. DOERNER, COUNTY CLERK OF DOUGLAS COUNTY OREGON DO HEREBY CERTIFY THAT THE FOREGOING COPY OF PLAT HAS BEEN BY ME COMPARED WITH THE ORIGINAL THEREOF THAT IT IS A TRUE AND CORRECT COPY THEREFROM AND OF THE WHOLE THEREOF AS THE SAME APPEARS ON FILE IN MY OFFICE AND CUSTODY. WITNESS MY HAND AND OFFICIAL SEAL THIS 2nd DAY OF December 1954.

Chas. Doerner
COUNTY CLERK

Chas. Doerner
COUNTY CLERK