

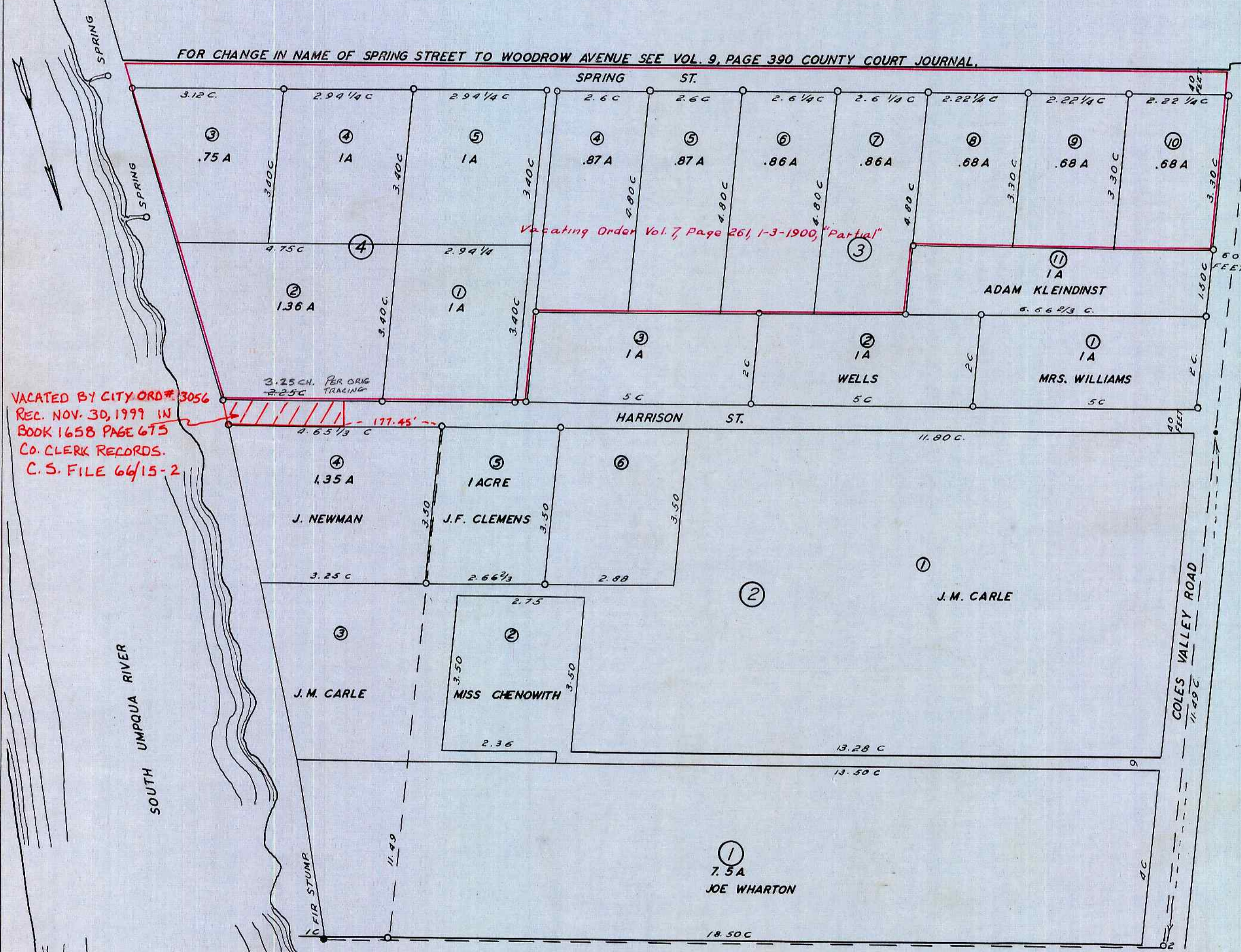
A. J. BELLOWS FIRST ADDITION TO WEST ROSEBURG DOUGLAS COUNTY ORE.

NOTE: THE POINT OF INTERSECTION OF THE COOS BAY WAGON ROAD AND THE ROAD LEADING FROM ROSEBURG TO COLES VALLEY THE S. W. COR. OF JEREMIAH HUNTLEYS DONATION CLAIM NO. (56) AN IRON ROD 2 IN. DIAM SET TWO FEET IN THE GROUND WITH WITNESS TREES (SEE FIELD NOTES) STATION NO (2) THE CENTER OF THE W. END OF SPRING STREET STANDS. N. 40° 30' W 6.30 C. STATION 3 N. 81° 30' W 19.18 C. THE N.W. CORNER OF C. A. MC. GEES LAND. STATION NO 4, N. 17.49 C. STATION NO. 5, S. 81° 30' E. 11.49 C. FOR MEASURE OF LOTS SEE PLATT.

SEPT. 29, 1894 WILL. P. HEYDON, COUNTY SURVEYOR.
FILED AND RECORDED OCT. 2, 1894 SGD. F. W. BENSON, COUNTY CLERK.

SCALE 2 CH. ONE INCH

FOR CHANGE IN NAME OF SPRING STREET TO WOODROW AVENUE SEE VOL. 9, PAGE 390 COUNTY COURT JOURNAL.



VACATED BY CITY ORD. 3056
REC. NOV. 30, 1999 IN
BOOK 1658 PAGE 675
CO. CLERK RECORDS.
C.S. FILE 66/15-2

STATE OF OREGON }
COUNTY OF DOUGLAS } SS
I, BEN B. IRVING, COUNTY SURVEYOR OF DOUGLAS COUNTY OREGON DO HEREBY CERTIFY THAT THIS COPY OF "A. J. BELLOWS FIRST ADDITION TO WEST ROSEBURG" IS A TRUE AND CORRECT COPY OF THE ORIGINAL PLAT AS FILED IN THE OFFICE OF THE COUNTY CLERK, AND IS MADE IN COMPLIANCE WITH CHAPTER 92 OREGON LAWS 1953, SEC. 92-130.

B. B. Irving
COUNTY SURVEYOR

SUBSCRIBED AND SWORN TO BEFORE ME THIS 1st DAY OF December, 1954.

Chas Doerner
COUNTY CLERK

STATE OF OREGON }
COUNTY OF DOUGLAS } SS
I, CHAS. DOERNER, COUNTY CLERK OF DOUGLAS COUNTY OREGON DO HEREBY CERTIFY THAT THE FOREGOING COPY OF PLAT HAS BEEN BY ME COMPARED WITH THE ORIGINAL THEREOF THAT IT IS A TRUE AND CORRECT COPY THEREFROM AND OF THE WHOLE THEREOF AS THE SAME APPEARS ON FILE IN MY OFFICE AND CUSTODY. WITNESS MY HAND AND OFFICIAL SEAL THIS 1st DAY OF December 1954.

Chas Doerner
COUNTY CLERK