

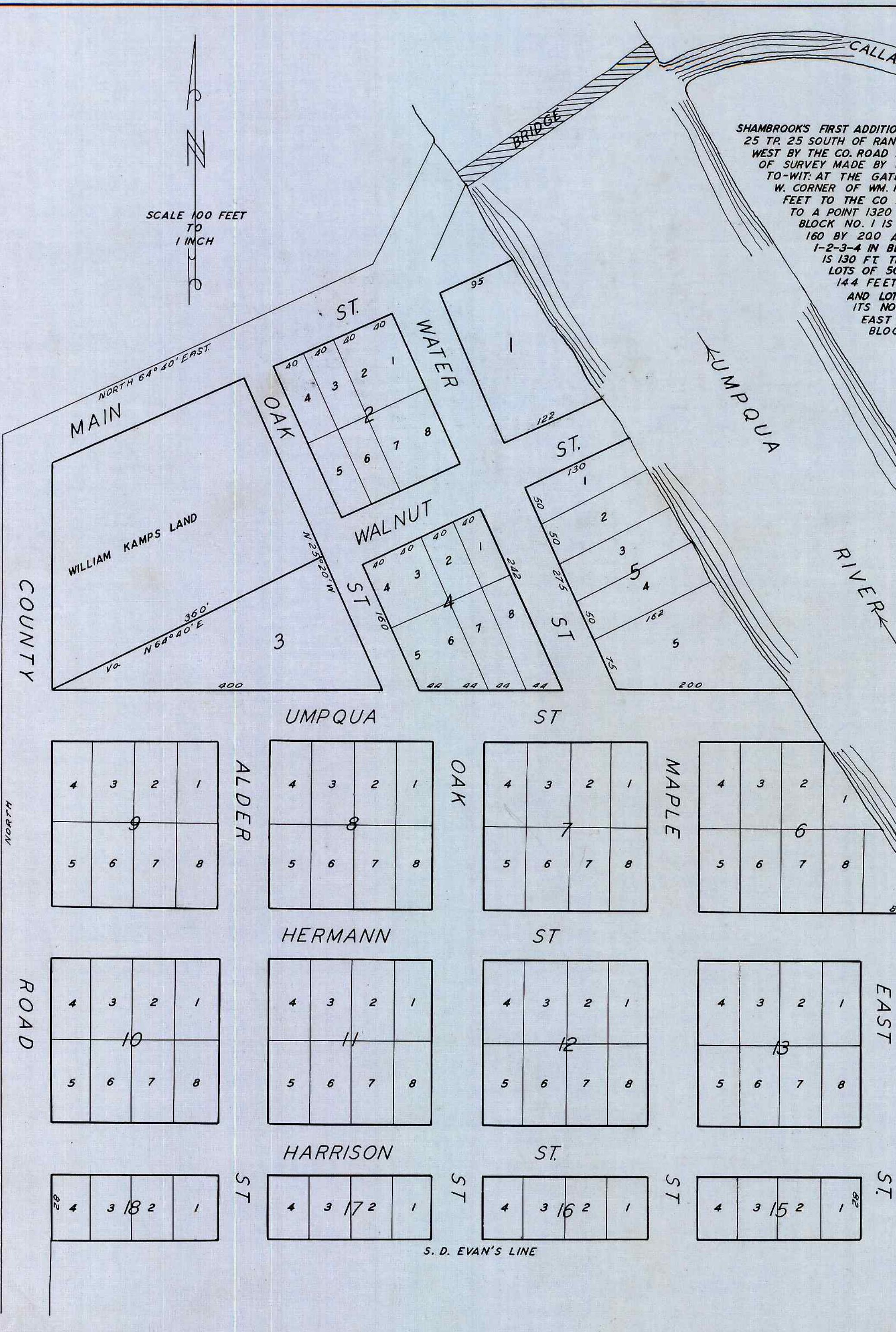
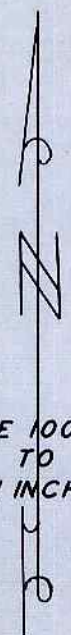
# SHAMBROOK'S FIRST ADDITION TO UMPQUA FERRY, DOUGLAS CO. OREGON

SHAMBROOK'S FIRST ADDITION TO UMPQUA FERRY IS BOUNDED AS FOLLOWS. ON THE NORTH BY THE CO. ROAD AND THE LANDS OF WILLIAM KAMPS, ON THE WEST BY THE CO. ROAD AND THE LANDS OF WM. KAMPS, ON THE SOUTH BY THE LANDS OF S. D. EVANS, ON THE EAST BY THE UMPQUA RIVER. NOTES OF SURVEY MADE BY W. P. HEYDON NOV. 16, A. D. 1893.

TO-WIT: AT THE GATE POST ON THE LINE BETWEEN W. CORNER OF WM. KAMPS LAND AND THENCE NORTH 64° 40' E. 355 FEET TO THE CO. ROAD; THENCE NORTH 64° 40' E. 355 FEET TO A POINT 1320 FEET EAST OF THE PLACE OF BEGINNING THENCE WEST 1320 FEET TO THE PLACE OF BEGINNING. SAID PLAT CONTAINING 24 1/2 ACRES.

BLOCK NO. 1 IS 95 FEET ON THE NORTH SIDE AND 122 FEET ON ITS SOUTH SIDE AND BOUNDED BY THE UMPQUA RIVER ON THE EAST. BLOCK NO. 2 IS 160 BY 200 AND CONTAINS 8 EQUAL LOTS 40 X 100 FEET. BLOCK NO. 3 CONTAINS .64 OF 1 ACRE LIES DIRECTLY SOUTH OF WM. KAMPS LAND LOTS 1-2-3-4 IN BLOCK 4 ARE 40 X 100 FEET. LOTS 5-6-7-8 IN BLOCK 4 ARE 40 FT. WIDE, AND ARE BOUNDED BY UMPQUA ST. ON THE EAST END BLOCK 5 IS 130 FT THE NORTH END ITS SOUTH LINE 200 FT. ITS WEST LINE 275 FT ITS EAST LINE THE RIVER IS DEVIDED FROM THE NORTH END INTO FOUR LOTS OF 50 FEET EACH FROM WATER ST. RUNNING EAST TO THE RIVER. LOT 5 BEING 75 FT ON WATER ST AND 200 FT ON UMPQUA ST. BLOCK 6 IS 144 FEET ON THE NORTH LINE, 280 FT. ON THE SOUTH LINE, WEST LINE 200 FT. AND EXTENDS EAST TO THE RIVER. LOTS 1-2-3-4 ARE 50 FT AND LOT 5 IS 80 FT WIDE. BLOCKS 7-8-9-10-11-12 & 13 ARE 200 FT SQUARE CONTAIN 8 LOTS EACH 50 X 100 FT. BLOCK 14 IS 60 FEET ON ITS NORTH END 280 FT ON ITS SOUTH END, ITS WEST SIDE 310 FT. LOTS 1-2-3-4 & 5 ARE 50 FT AND LOT 6, 60 FT. WIDE AND EXTENDS EAST TO THE RIVER. ALL LOTS IN BLOCKS 15-16-17 AND 18 ARE 50 X 82 FEET. ALL STREETS ARE 60 FT. WIDE EXCEPT OAK ST. BETWEEN BLOCKS 2-3 & 4 AND THE LANDS OF WM. KAMP, SAID STREET IS 40 FEET WIDE.

SCALE 100 FEET TO 1 INCH



STATE OF OREGON }  
 COUNTY OF DOUGLAS }  
 I, BEN B. IRVING COUNTY SURVEYOR OF DOUGLAS COUNTY OREGON DO HEREBY CERTIFY THAT THIS COPY OF "SHAMBROOK'S FIRST ADDITION TO UMPQUA FERRY" IS A TRUE AND CORRECT COPY OF THE ORIGINAL PLAT AS FILED IN THE OFFICE OF THE COUNTY CLERK, AND IS MADE IN COMPLIANCE WITH CHAPTER 92 OREGON LAWS 1953, SEC. 92-130.

*Ben B. Irving*  
 COUNTY SURVEYOR

SUBSCRIBED AND SWORN TO BEFORE ME THIS 13<sup>th</sup> DAY OF December, 1954.

*Chas. Doerner*  
 COUNTY CLERK

STATE OF OREGON }  
 COUNTY OF DOUGLAS }  
 I, CHAS. DOERNER COUNTY CLERK OF DOUGLAS COUNTY OREGON DO HEREBY CERTIFY THAT THE FOREGOING COPY OF PLAT HAS BEEN BY ME COMPARED WITH THE ORIGINAL THEREOF, THAT IT IS A TRUE AND CORRECT COPY THEREFROM AND OF THE WHOLE THEREOF AS THE SAME APPEARS ON FILE IN MY OFFICE AND CUSTODY. WITNESS MY HAND AND OFFICIAL SEAL THIS 13<sup>th</sup> DAY OF December, 1954.

*Chas. Doerner*  
 COUNTY CLERK

W. P. HEYDON, SUR.  
 B. F. SHAMBROOK AST.  
 RECORDED DEC. 12-1893  
 COUNTY CLERK