

# PLAT OF ELKTON

DOUGLAS COUNTY  
OREGON

N 46° 30' E 1583 Ft.

South 1334 Ft.

S 39° 30' E 263 Ft.

N 44° 20' W 1385 Ft.

S 47° 30' W 86 ft

N 51° 40' W 207 ft.

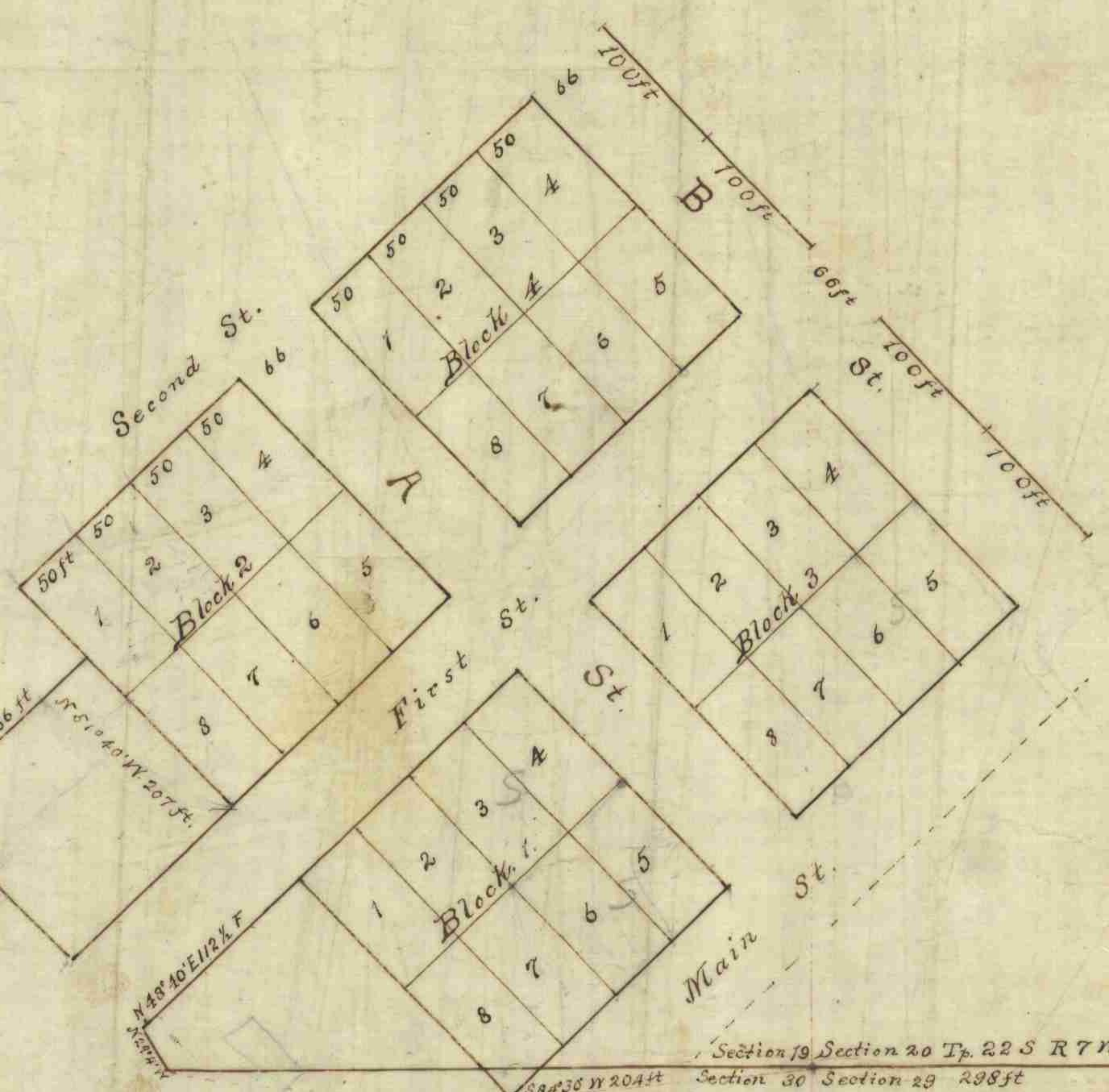
N 48° 40' E 112 1/2 Ft.

S 84° 30' W 204 ft  
West 728 ft

Section 19 Section 20 Tp. 22 S R 7 W.

Section 30 Section 29 298 ft

S 80° 57' W 474 1/2 Ft.



6  
3061

Division recorded on p. 22 on page 308 book of Deeds

Recorded December 27<sup>th</sup> 1889  
T. A. Taylor County Clerk  
By F. W. Baran Deputy