

# AMENDED PLAT OF DIXON'S ADDITION TO FRUITVALE

RECORDED DEC. 11, 1891 (SGD) G. A. TAYLOR, CO. CLERK

STATE OF OREGON }  
COUNTY OF DOUGLAS } SS

I, BEN B. IRVING, COUNTY SURVEYOR OF DOUGLAS COUNTY OREGON DO HEREBY CERTIFY THAT THIS COPY OF "AMENDED PLAT OF DIXON'S ADDITION TO FRUITVALE" IS A TRUE AND CORRECT COPY OF THE ORIGINAL PLAT AS FILED IN THE OFFICE OF THE COUNTY CLERK, AND IS MADE IN COMPLIANCE WITH CHAPTER 92, OREGON LAWS 1953, SEC. 92-130.

*Ben B. Irving*  
COUNTY SURVEYOR

SUBSCRIBED AND SWORN TO BEFORE ME THIS 13<sup>th</sup> DAY OF Dec., 1954.

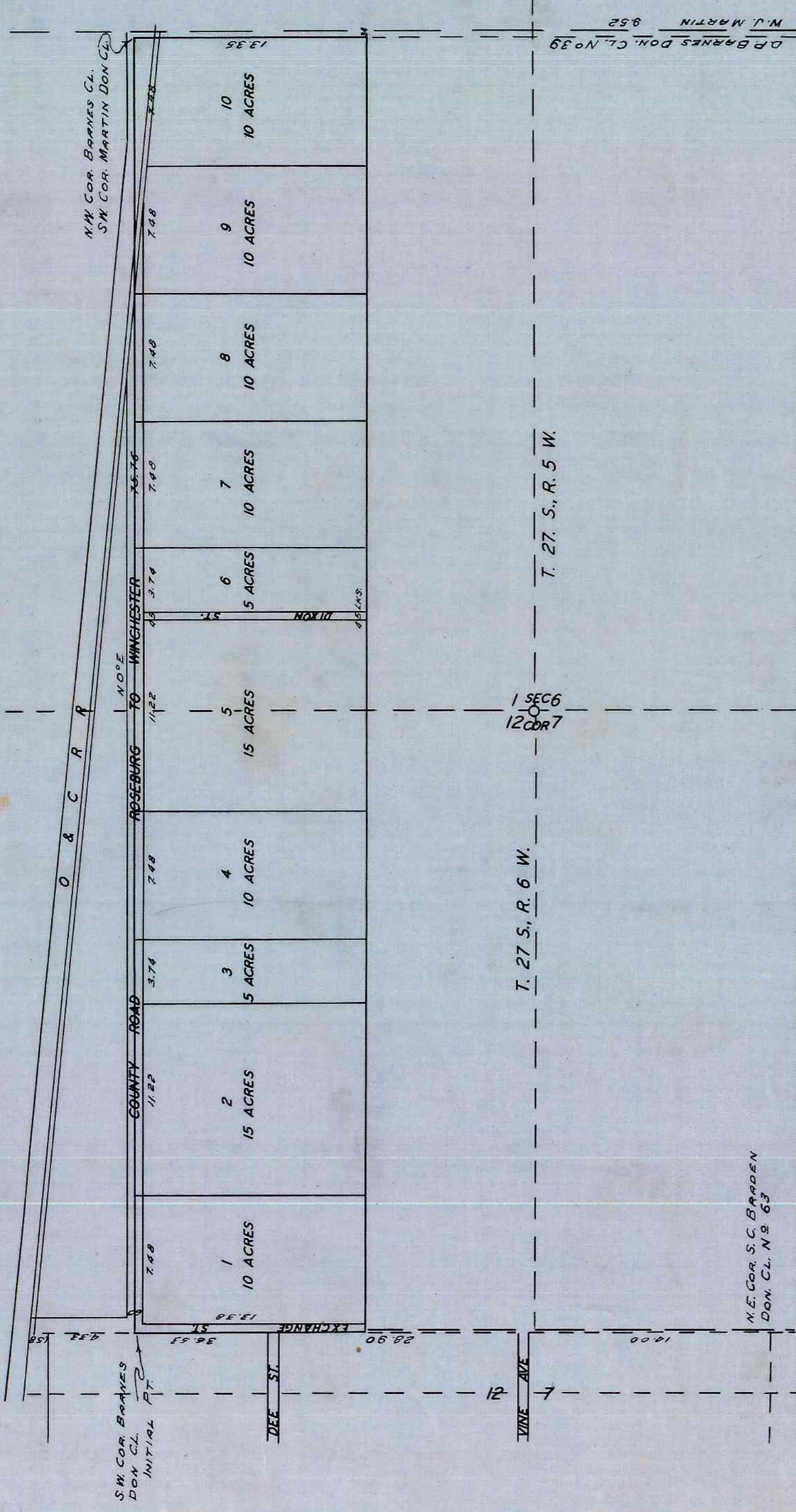
*Chas. Doerner*  
COUNTY CLERK

STATE OF OREGON }  
COUNTY OF DOUGLAS } SS

I, CHAS. DOERNER, COUNTY CLERK OF DOUGLAS COUNTY OREGON, DO HEREBY CERTIFY THAT THE FOREGOING COPY OF PLAT HAS BEEN BY ME COMPARED WITH THE ORIGINAL THEREOF THAT IT IS A TRUE AND CORRECT COPY THEREFROM AND OF THE WHOLE THEREOF AS THE SAME APPEARS ON FILE IN MY OFFICE AND CUSTODY.

WITNESS MY HAND AND OFFICIAL SEAL THIS 13<sup>th</sup> DAY OF December, 1954

*Chas. Doerner*  
COUNTY CLERK



N.E. COR. S.C. BARDEN  
DON. CL. N.E. 63

5, 10 AND 15 ACRE BLOCKS.

SCALE 400 FT. = 1 INCH J.W. LINCOLN C.E.