

AMENDED PLAT OF THE CANNON AND CHANDLER ADDITION TO ROSEBURG

(ENCLOSED IN RED LINES)

RECORDED JAN. 12, 1891 (SGD.) G. A. TAYLOR, COUNTY CLERK.—

STATE OF OREGON }
COUNTY OF DOUGLAS }
I, BEN B. IRVING, COUNTY SURVEYOR OF DOUGLAS COUNTY
OREGON DO HEREBY CERTIFY THAT THIS COPY OF "AMENDED
PLAT OF THE CANNON AND CHANDLER ADDITION TO ROSEBURG"
IS A TRUE AND CORRECT COPY OF THE ORIGINAL PLAT AS
FILED IN THE OFFICE OF THE COUNTY CLERK AND IS MADE
IN COMPLIANCE WITH CHAPTER 92, OREGON LAWS 1953, SEC.
92. 130.

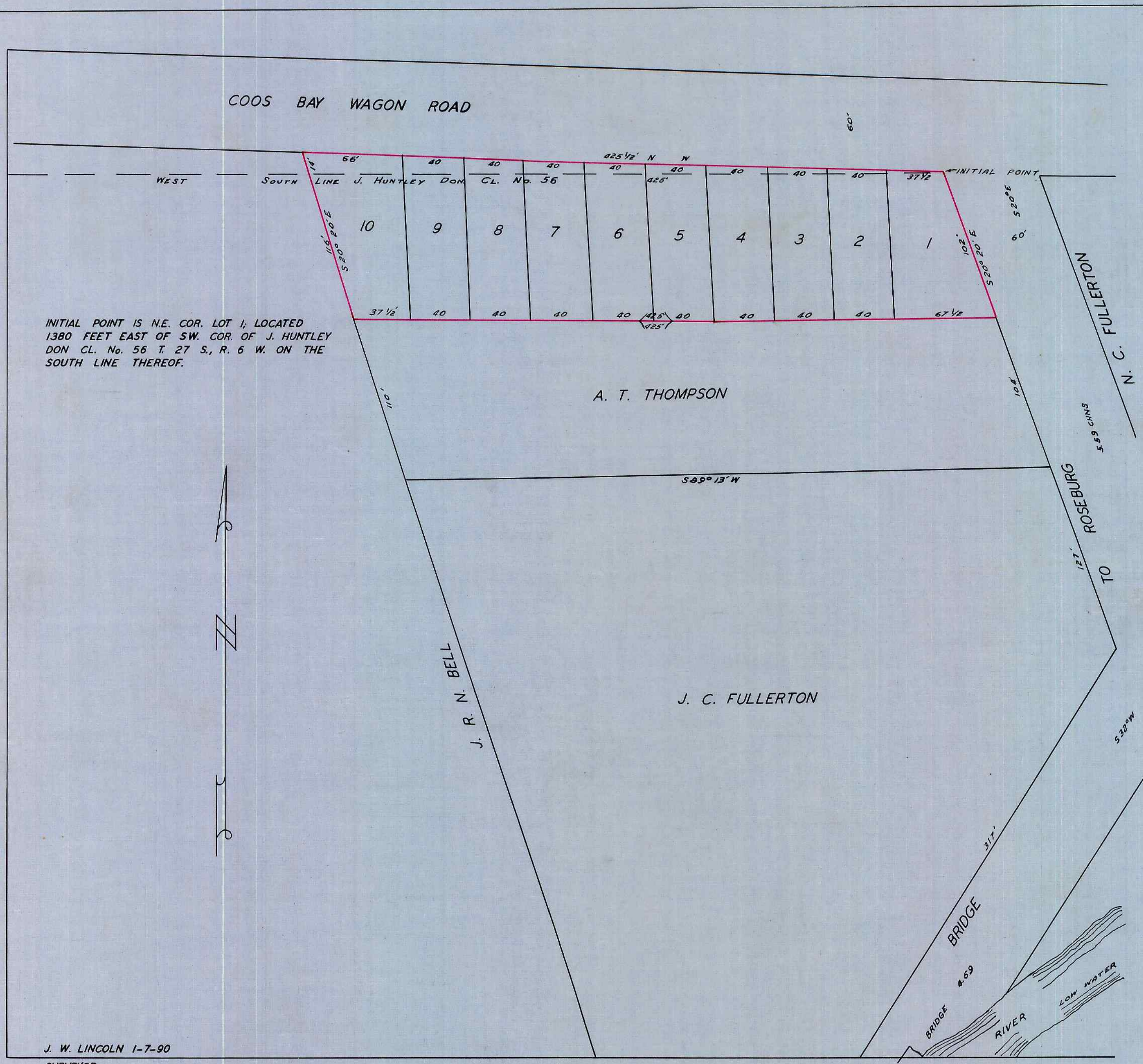
Ben B. Irving
COUNTY SURVEYOR

SUBSCRIBED AND SWORN TO BEFORE ME THIS 13th DAY OF
December 1954.

Chas Doerner
COUNTY CLERK

STATE OF OREGON }
COUNTY OF DOUGLAS }
I, CHAS. DOERNER, COUNTY CLERK OF DOUGLAS COUNTY
OREGON DO HEREBY CERTIFY THAT THE FOREGOING COPY OF
PLAT HAS BEEN BY ME COMPARED WITH THE ORIGINAL
THEREOF, THAT IT IS A TRUE AND CORRECT COPY THEREFROM
AND OF THE WHOLE THEREOF AS THE SAME APPEARS ON
FILE IN MY OFFICE AND CUSTODY.
WITNESS MY HAND AND OFFICIAL SEAL THIS 13th
DAY OF December 1954.

Chas Doerner
COUNTY CLERK



J. W. LINCOLN 1-7-90
SURVEYOR