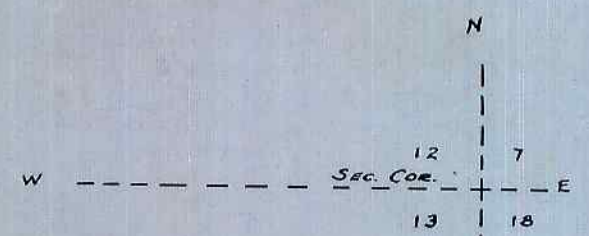


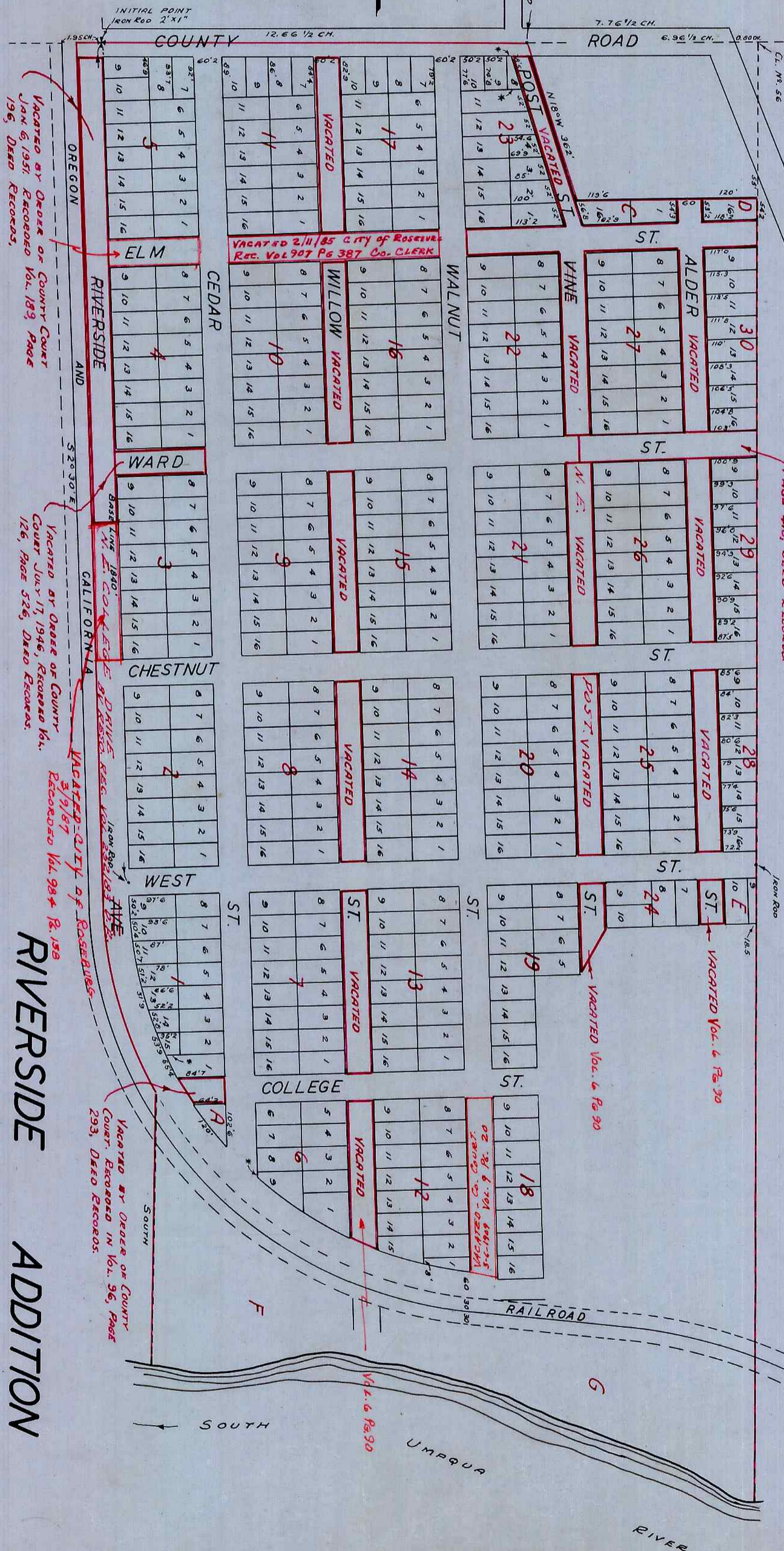
STATE OF OREGON) S.S.
COUNTY OF DOUGLAS)
I, BEN B. IRVING, COUNTY SURVEYOR OF DOUGLAS COUNTY, OREGON,
DO HEREBY CERTIFY THAT THIS COPY OF "RIVERSIDE ADDITION" IS A TRUE
AND CORRECT COPY OF THE ORIGINAL PLAT AS FILED IN THE OFFICE OF
THE COUNTY CLERK, AND IS MADE IN COMPLIANCE WITH CHAPTER 175,
OREGON LAWS, 1949, SEC. 95-1307A.

SUBSCRIBED AND SWORN TO BEFORE ME THIS 7th DAY OF May
1953.

Ben B. Irving
COUNTY SURVEYOR
Chas. Doerner
COUNTY CLERK



NOTE:
* INDICATES DIMENSIONS THAT ARE ILLEGIBLE
ON ORIGINAL MAPS AND ARE THEREFORE NOT
SHOWN HEREON.



STATE OF OREGON) SS
COUNTY OF DOUGLAS)

I, CHAS. DOERNER, COUNTY CLERK OF DOUGLAS COUNTY, OREGON,
DO HEREBY CERTIFY THAT THE FOREGOING COPY OF PLAT HAS BEEN
BY ME COMPARED WITH THE ORIGINAL THEREOF, THAT IT IS A TRUE
AND CORRECT COPY THEREFROM, AND OF THE WHOLE THEREOF, AS
THE SAME APPEARS ON FILE IN MY OFFICE AND IN MY HAND AND OFFICIAL SEAL THIS 7th DAY OF
May 1953.

Chas. Doerner
COUNTY CLERK

SEE VOL. 23 PAGE 245 OF DEED
RECORDS, FOR DEDICATION.

VACATION ORDER VOL. 6 PAGE 90.

FILED JUNE 17, 1890
G. A. TAYLOR (S.G.D.)
COUNTY CLERK
ROSEBURG
SCALE 1" = 200'

RIVERSIDE
TO
ADDITION

INITIAL PT. IS IN CENTRE COUNTY ROAD TO WINCHESTER
AT INTERSECTION OF NORTH LINE J. HUNTLEY DON. CL. N. 956
60 FT. FROM EAST LINE OF R.R. RIGHT OF WAY. SAID POINT
IS 1100 CH. S. AND 27.48 CH. W. OF NE. COR. SEC. 13, T. 27S
R. 6W.
STREETS 60' WIDE EXCEPT POST ST. 40'