

PLAT - B

ROSEBURG HOME - ORCHARD TRACTS

DOUGLAS COUNTY OREGON

BEING THE SOUTH HALF OF DONATION LAND CLAIM NO. 40. ALSO LOTS 2, 3, 4, AND PART OF 5 IN SEC. 29. ALSO LOTS 3 & 4 AND PART OF LOTS 1 & 2 IN SEC. 32 ALL IN T. 26 S., R. 6 W. W. M.

ROBERTS AND GERMOND ENGINEERS 1908

STATE OF OREGON }
COUNTY OF DOUGLAS }
I, BEN B. IRVING COUNTY SURVEYOR OF DOUGLAS COUNTY OREGON DO HEREBY CERTIFY THAT THIS COPY OF "PLAT B ROSEBURG HOME-ORCHARD TRACTS" IS A TRUE AND CORRECT COPY OF THE ORIGINAL PLAT AS FILED IN THE OFFICE OF THE COUNTY CLERK AND IS MADE IN COMPLIANCE WITH CHAPTER 92 OREGON LAWS 1953 SEC. 92-130.

Ben B. Irving
COUNTY SURVEYOR

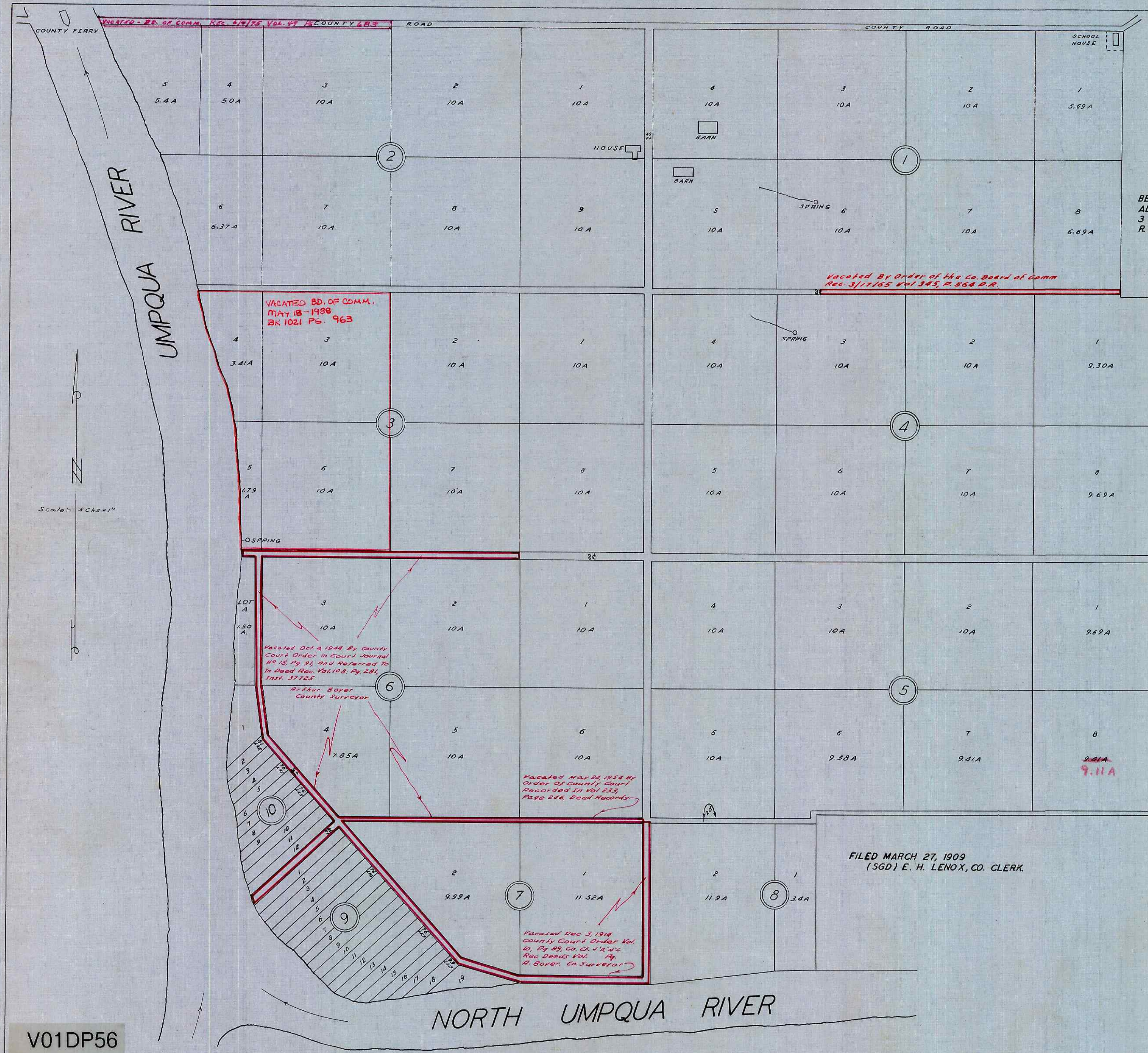
SUBSCRIBED AND SWORN TO BEFORE ME THIS 24 DAY OF January 1955.

Chas Doerner
COUNTY CLERK

STATE OF OREGON }
COUNTY OF DOUGLAS }
I, CHAS. DOERNER COUNTY CLERK OF DOUGLAS COUNTY OREGON DO HEREBY CERTIFY THAT THE FOREGOING COPY OF PLAT HAS BEEN BY ME COMPARED WITH THE ORIGINAL THEREOF THAT IT IS A TRUE AND CORRECT COPY THEREFROM AND OF THE WHOLE THEREOF AS THE SAME APPEARS ON FILE IN MY OFFICE AND CUSTODY.

WITNESS MY HAND AND OFFICIAL SEAL THIS 26 DAY OF January 1955.
Chas Doerner
COUNTY CLERK

FILED MARCH 27, 1909
(SGD) E. H. LENOX, CO. CLERK.



V01DP56