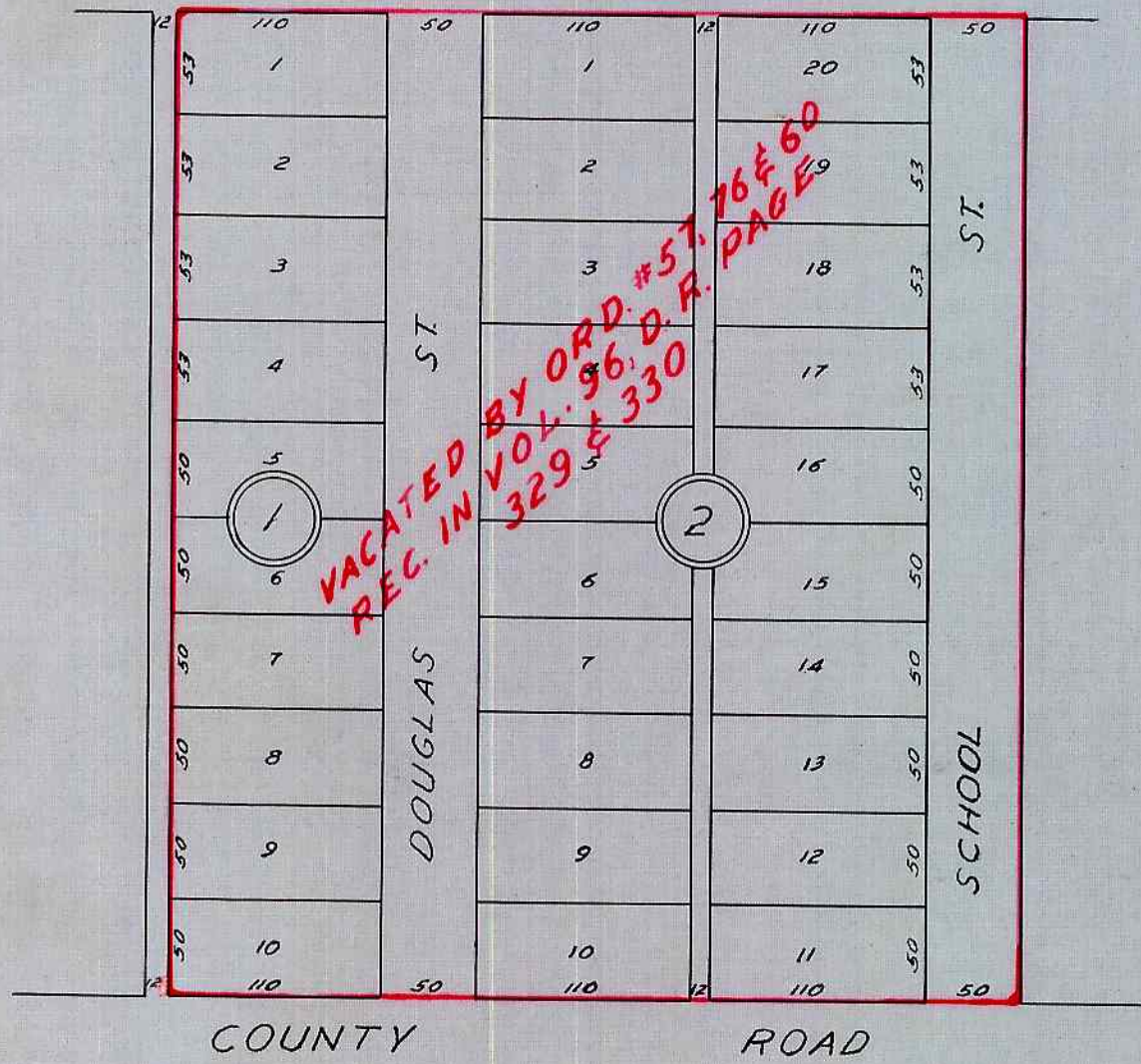


# ARUNDEL AND NELSON'S SUBDIVISION OF GABBERT'S 2<sup>ND</sup> ADDITION TO MYRTLE CREEK OREGON

BEING LOTS 4, 5 AND 99 FT. OFF FROM THE WEST SIDE OF LOT 6  
SURVEYED AND PLATTED BY  
ROBERTS & GERMOND  
ENGINEERS 1909



KNOW ALL MEN BY THESE PRESENTS, THAT C. H. ARUNDEL AND FRANCES ARUNDEL HIS WIFE AND C. O. NELSON AND LIZZIE C. NELSON HIS WIFE THE OWNERS OF THE LAND SHOWN ON THE ANNEXED PLAT CAUSED THE SAME TO BE SURVEYED AND PLATTED AS ARUNDEL AND NELSON'S SUBDIVISION OF GABBERTS SECOND ADDITION TO MYRTLE CREEK, OREGON, AND DO HEREBY DEDICATE TO THE PUBLIC USE FOREVER THE STREETS AND ALLEYS SHOWN THEREON.

WITNESS OUR HANDS AND SEALS THIS DAY OF 1909  
IN PRESENCE OF } B. J. HOWLAND  
H. J. BAILEY

(SGD) C. H. ARUNDEL (SEAL)  
(SGD) FRANCES ARUNDEL (SEAL)  
(SGD) C. O. NELSON (SEAL)  
(SGD) LIZZIE C. NELSON (SEAL)

STATE OF OREGON }  
COUNTY OF DOUGLAS } SS

ON THE 27TH DAY OF MARCH, 1909 PERSONALLY APPEARED BEFORE ME A NOTARY PUBLIC IN AND FOR THE STATE OF OREGON, C. H. ARUNDEL AND FRANCES ARUNDEL HIS WIFE, C. O. NELSON AND LIZZIE C. NELSON HIS WIFE AND ACKNOWLEDGE TO ME THAT THEY EXECUTED THE FOREGOING DEDICATION FOR THE USES AND PURPOSES THEREIN NAMED.

WITNESS MY HAND AND OFFICIAL SEAL THE DAY AND YEAR LAST ABOVE WRITTEN.  
(SEAL)

(SGD) BURT J. HOWLAND  
(SGD) BURT J. HOWLAND, NOTARY PUBLIC FOR OREGON

APPROVED MAY 5, 1909 (SGD) F. L. CALKINS, COUNTY ASSESSOR  
APPROVED MAY TERM 1909 (SGD) G. W. WONDICOTT, COUNTY JUDGE

APPROVED MAY 6, 1909 (SGD) G. E. ROBERTS, COUNTY SURVEYOR  
FILED MAY 7, 1909 (SGD) E. H. LENOX, COUNTY CLERK  
BY BLANCHE REED, DEPUTY

STATE OF OREGON }  
COUNTY OF DOUGLAS } SS

I, BEN B. IRVING COUNTY SURVEYOR OF DOUGLAS COUNTY OREGON DO HEREBY CERTIFY THAT THIS COPY OF "ARUNDEL AND NELSON'S SUBDIVISION OF GABBERT'S 2ND ADDITION TO MYRTLE CREEK OREGON" IS A TRUE AND CORRECT COPY OF THE ORIGINAL PLAT AS FILED IN THE OFFICE OF THE COUNTY CLERK AND IS MADE IN COMPLIANCE WITH CHAPTER 92 OREGON LAWS 1953 SEC. 92 - 130.

*Ben B. Irving*  
COUNTY SURVEYOR

SUBSCRIBED AND SWORN TO BEFORE ME THIS 26 DAY OF January, 1955.

*Chas. Doerner*  
COUNTY CLERK

STATE OF OREGON }  
COUNTY OF DOUGLAS } SS

I, CHAS. DOERNER COUNTY CLERK OF DOUGLAS COUNTY OREGON DO HEREBY CERTIFY THAT THE FOREGOING COPY OF PLAT HAS BEEN, BY ME COMPARED WITH THE ORIGINAL THEREOF THAT IT IS A TRUE AND CORRECT COPY THEREFROM AND OF THE WHOLE THEREOF AS THE SAME APPEARS ON FILE IN MY OFFICE AND CUSTODY  
WITNESS MY HAND AND OFFICIAL SEAL THIS 26 DAY OF January, 1955.

*Chas. Doerner*  
COUNTY CLERK

