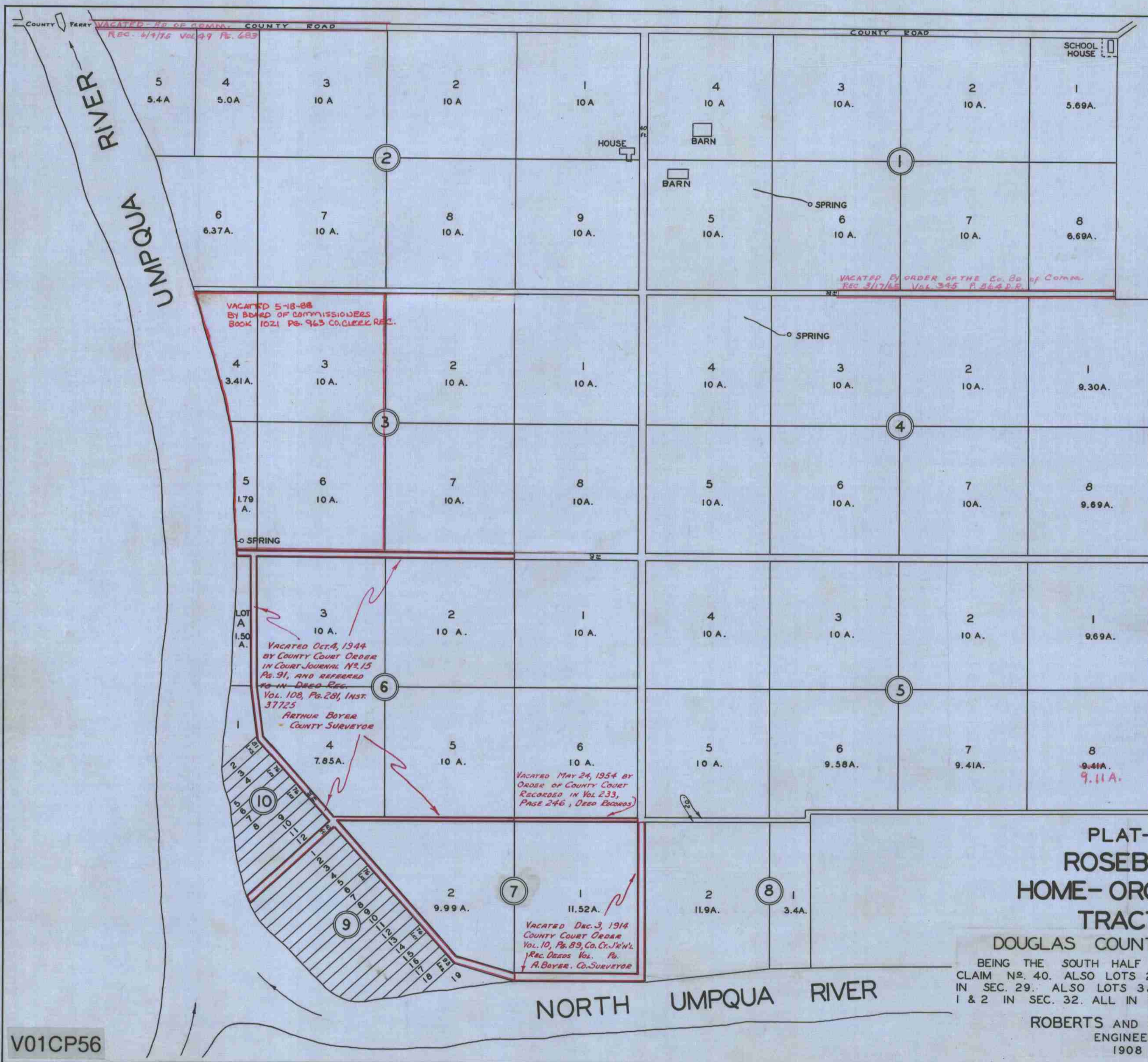


V01CP56



STATE OF OREGON) S.S.
 COUNTY OF DOUGLAS)

I, ROY AGEE, COUNTY CLERK OF DOUGLAS COUNTY, OREGON, DO HEREBY CERTIFY THAT THE FOREGOING COPY OF PLAT HAS BEEN BY ME COMPARED WITH THE ORIGINAL THEREOF, THAT IT IS A TRUE AND CORRECT COPY THEREFROM, AND OF THE WHOLE THEREOF, AS THE SAME APPEARS ON FILE IN MY OFFICE AND CUSTODY.

WITNESS MY HAND AND OFFICIAL SEAL THIS 18TH DAY OF JANUARY, 1952.

Roy Agee
 COUNTY CLERK.

FILED MARCH 27, 1909
 SGD E.H. LENOX
 CO. CLERK.

**PLAT-B-
 ROSEBURG
 HOME-ORCHARD
 TRACTS**

DOUGLAS COUNTY, OREGON

BEING THE SOUTH HALF OF DONATION LAND CLAIM NO. 40. ALSO LOTS 2, 3, 4, AND PART OF 5 IN SEC. 29. ALSO LOTS 3 & 4 AND PART OF LOTS 1 & 2 IN SEC. 32. ALL IN T26S. R6W. W.M.

ROBERTS AND GERMOND
 ENGINEERS
 1908

V01CP56