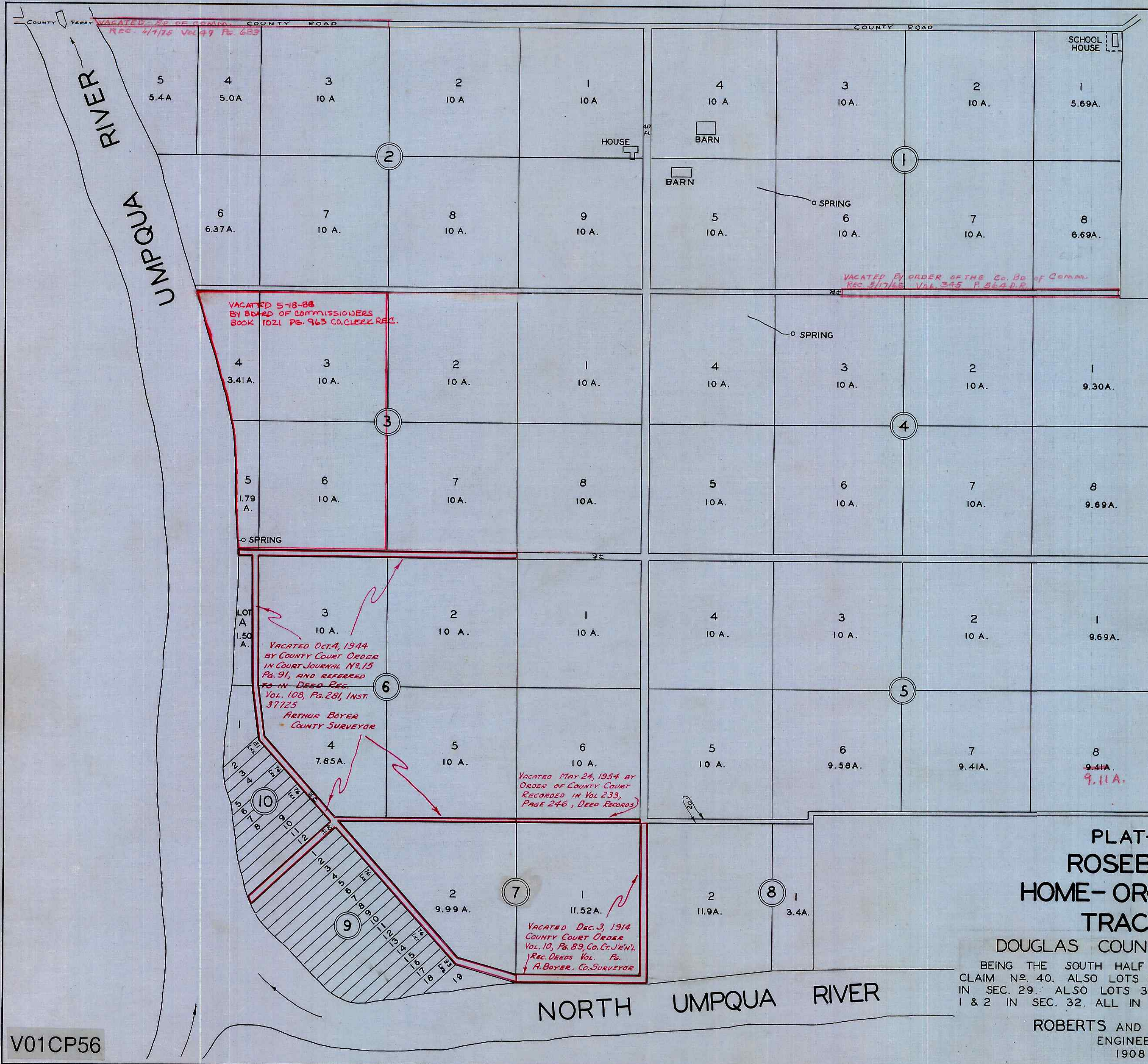


V01CP56



STATE OF OREGON ) S.S.  
 COUNTY OF DOUGLAS ) S.S.  
 I, ROY AGEE, COUNTY CLERK OF DOUGLAS COUNTY, OREGON, DO HEREBY CERTIFY THAT THE FOREGOING COPY OF PLAT HAS BEEN BY ME COMPARED WITH THE ORIGINAL THEREOF, THAT IT IS A TRUE AND CORRECT COPY THEREFROM, AND OF THE WHOLE THEREOF, AS THE SAME APPEARS ON FILE IN MY OFFICE AND CUSTODY.  
 WITNESS MY HAND AND OFFICIAL SEAL THIS 18<sup>TH</sup> DAY OF JANUARY, 1952.  
 Roy Agee  
 COUNTY CLERK.

FILED MARCH 27, 1909  
 SGD E.H. LENOX  
 CO. CLERK.

**PLAT-B-  
 ROSEBURG  
 HOME-ORCHARD  
 TRACTS**

DOUGLAS COUNTY, OREGON

BEING THE SOUTH HALF OF DONATION LAND CLAIM No. 40. ALSO LOTS 2, 3, 4, AND PART OF 5 IN SEC. 29. ALSO LOTS 3 & 4 AND PART OF LOTS 1 & 2 IN SEC. 32. ALL IN T26S. R6W. W.M.

ROBERTS AND GERMOND  
 ENGINEERS  
 1908

V01CP56