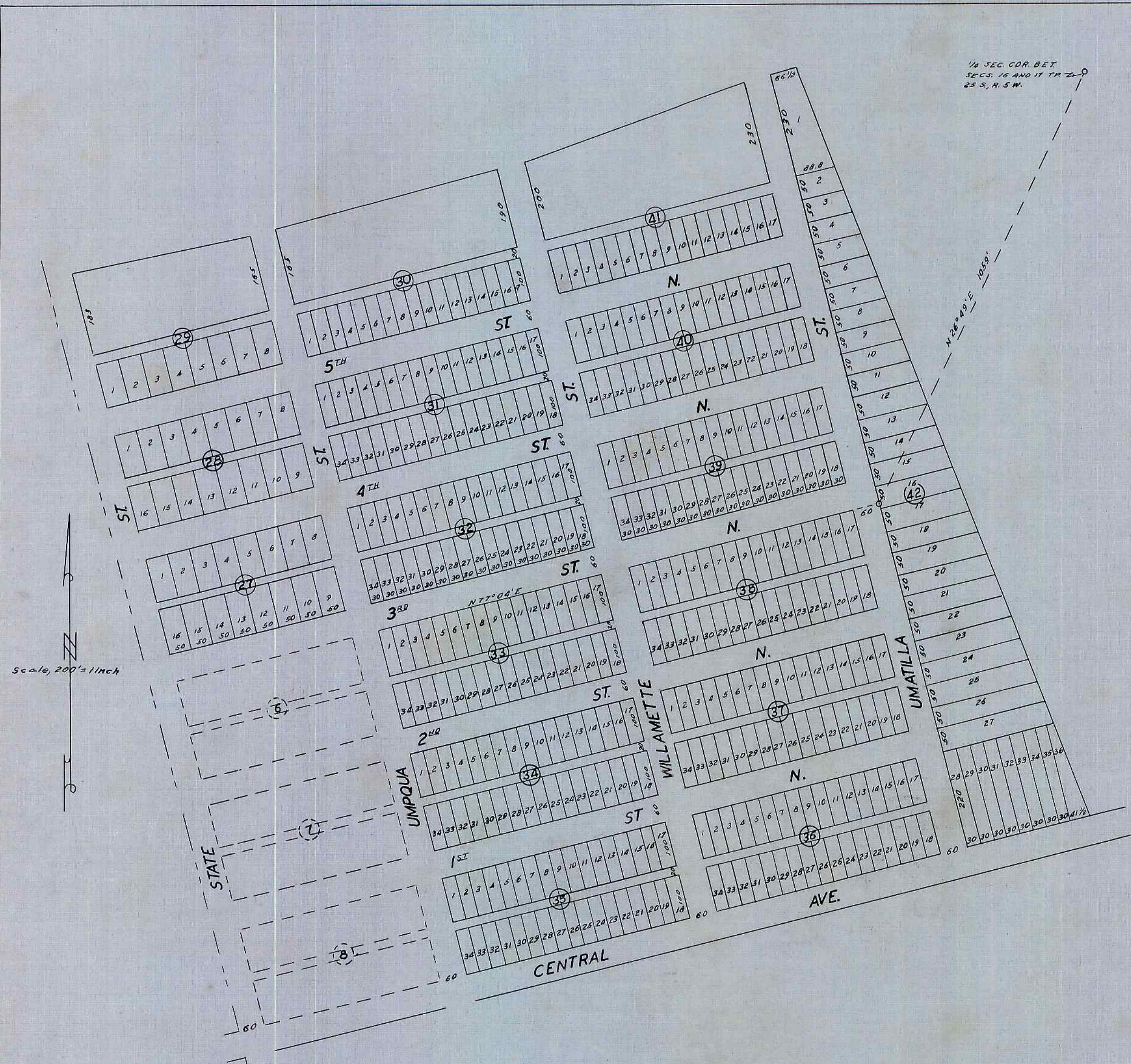


# SUBDIVISION OF BLOCKS 4 AND 5 PLAT - A - THE SUTHERLIN LAND AND WATER CO. DOUGLAS COUNTY OREGON

See "Amended Plat of the  
Townsite of Sutherlin"  
Vol 3 Pg 20



Scale, 200' = 1 inch

SURVEYED AND PLATTED  
BY  
ROBERTS AND GERMOND  
ENGINEERS  
1909

APPROVED MARCH 3-1909  
(SGD) C. E. ROBERTS, CO. SURVEYOR  
DOUGLAS COUNTY

APPROVED MCH. 4TH 1909  
(SGD) FRANK L. CALKINS, ASSESSOR

APPROVED MARCH TERM, 1909  
(SGD) G. W. WONACOTT, COUNTY JUDGE

FILED MARCH 4, 1909  
(SGD) E. H. LENOX, COUNTY CLERK

STATE OF OREGON }  
COUNTY OF DOUGLAS } SS  
I, BEN B. IRVING, COUNTY SURVEYOR OF DOUGLAS COUNTY OREGON DO HEREBY CERTIFY THAT THIS  
COPY OF 'SUBDIVISION OF BLOCKS 4 AND 5 PLAT - A - THE SUTHERLIN LAND AND WATER CO.' IS A TRUE AND  
CORRECT COPY OF THE ORIGINAL PLAT AS FILED IN THE OFFICE OF THE COUNTY CLERK AND IS MADE IN  
COMPLIANCE WITH CHAPTER 92 OREGON LAWS 1953, SEC. 92-130.

*Ben B. Irving*  
COUNTY SURVEYOR

SUBSCRIBED AND SWORN TO BEFORE ME THIS 26 DAY OF January 1955

*Chas. Doerner*  
COUNTY CLERK

STATE OF OREGON }  
COUNTY OF DOUGLAS } SS  
I, CHAS. DOERNER, COUNTY CLERK OF DOUGLAS COUNTY OREGON DO HEREBY CERTIFY THAT THE  
FOREGOING COPY OF PLAT HAS BEEN BY ME COMPARED WITH THE ORIGINAL THEREOF THAT IT IS A TRUE  
AND CORRECT COPY THEREFROM AND OF THE WHOLE THEREOF AS THE SAME APPEARS ON FILE IN MY  
OFFICE AND CUSTODY.  
WITNESS MY HAND AND OFFICIAL SEAL THIS 26 DAY OF January 1955

*Chas. Doerner*  
COUNTY CLERK