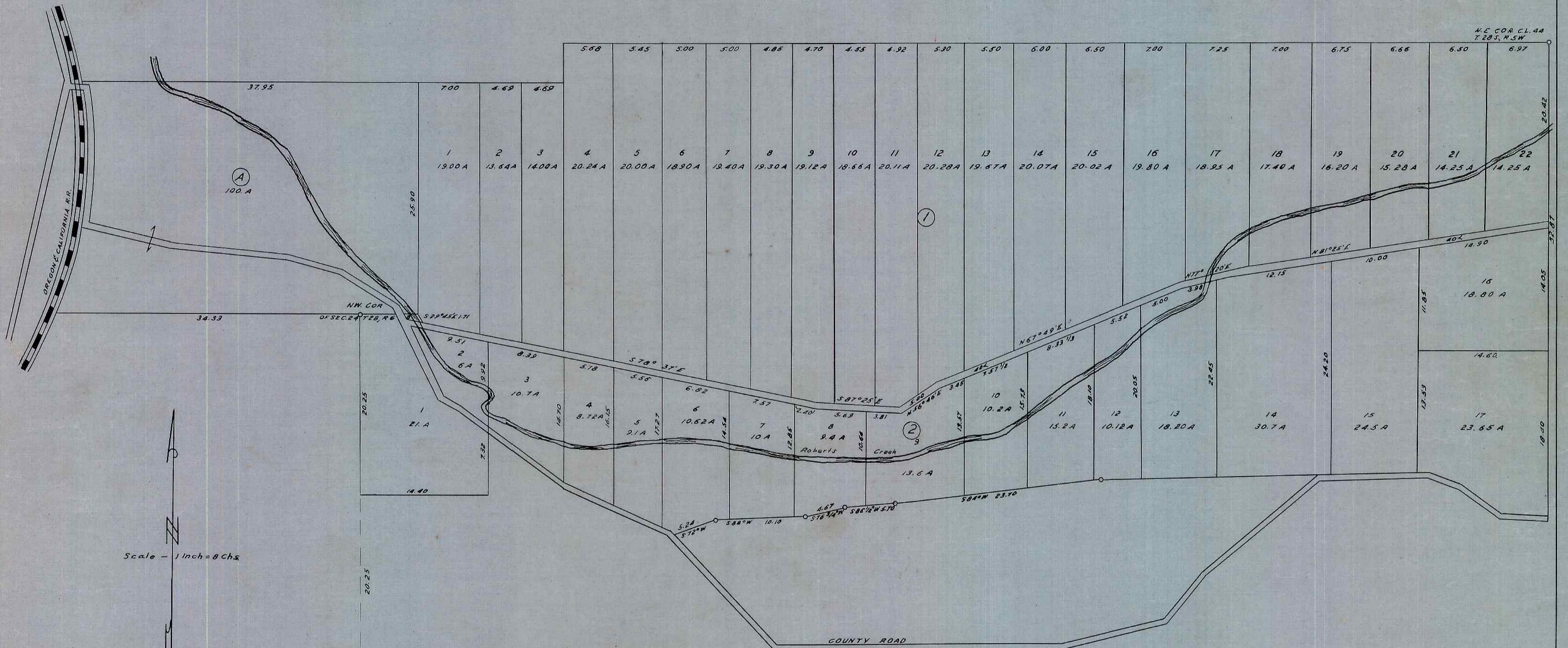


# GLENGARRY FRUIT LANDS DOUGLAS COUNTY OREGON



FILED FEBRUARY 16, 1909 E. H. LENOX, COUNTY CLERK

SURVEYED AND PLATTED BY ROBERTS AND GERMOND, ENGINEERS  
1909

STATE OF OREGON }  
 COUNTY OF DOUGLAS }  
 I, CHAS. DOERNER, COUNTY CLERK OF DOUGLAS COUNTY OREGON DO HEREBY CERTIFY THAT THE FOREGOING COPY OF PLAT HAS BEEN BY ME COMPARED WITH THE ORIGINAL THEREOF THAT IT IS A TRUE AND CORRECT COPY THEREFROM AND OF THE WHOLE THEREOF AS THE SAME APPEARS ON FILE IN MY OFFICE AND CUSTODY.  
 WITNESS MY HAND AND OFFICIAL SEAL THIS 26 DAY OF January 1955.

*Chas Doerner*  
 COUNTY CLERK

STATE OF OREGON }  
 COUNTY OF DOUGLAS }  
 I, BEN B. IRVING, COUNTY SURVEYOR OF DOUGLAS COUNTY OREGON, DO HEREBY CERTIFY THAT THIS THIS COPY OF "GLENGARRY FRUIT LANDS" IS A TRUE AND CORRECT COPY OF THE ORIGINAL PLAT AS FILED IN THE OFFICE OF THE COUNTY CLERK AND IS MADE IN COMPLIANCE WITH CHAPTER 92 OREGON LAWS 1953 SEC. 92 -130.

*Ben B. Irving*  
 COUNTY SURVEYOR

SUBSCRIBED AND SWORN TO BEFORE ME THIS 26 DAY OF January 1955

*Chas Doerner*  
 COUNTY CLERK