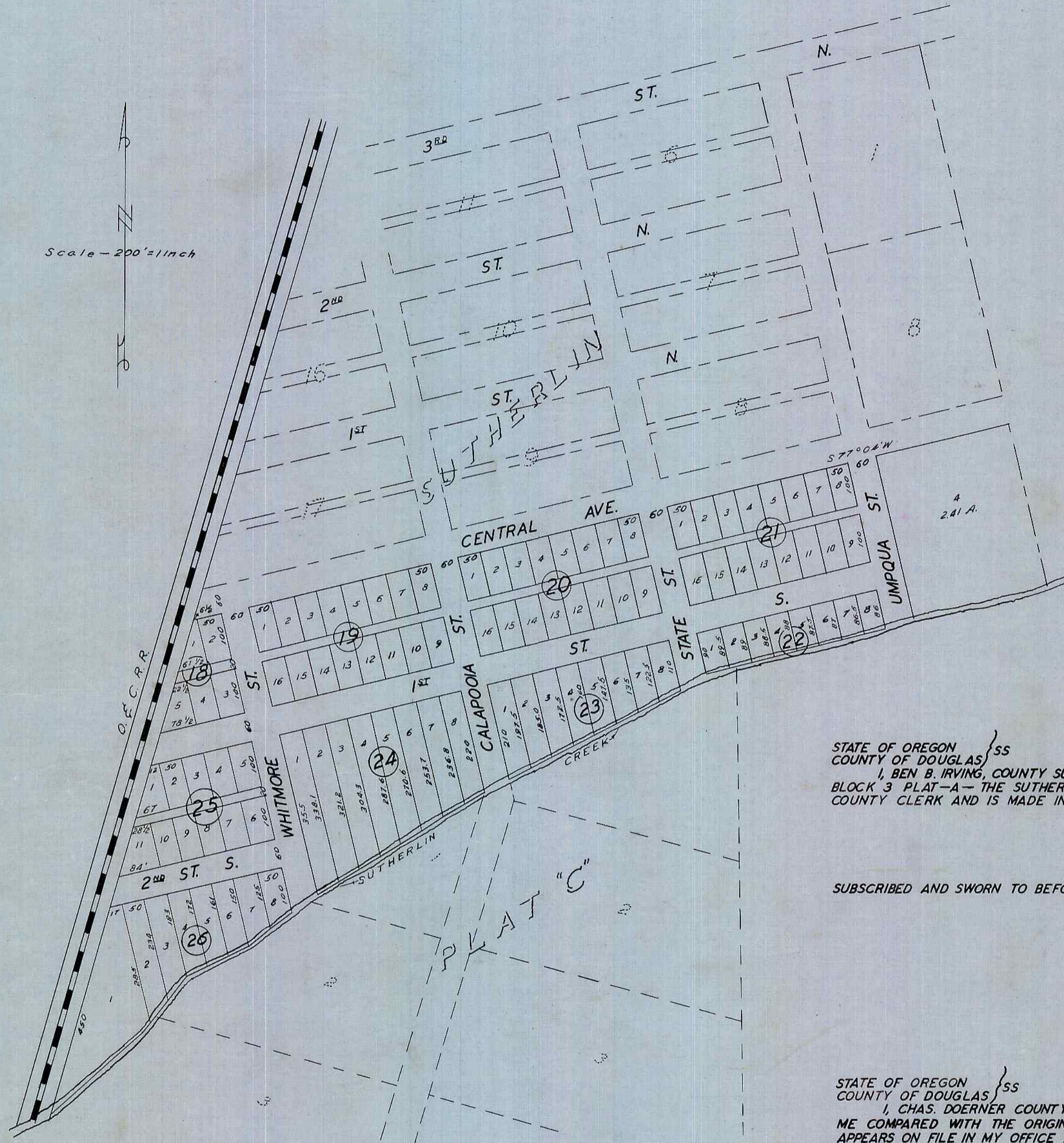


PLAT OF THE  
 SUBDIVISION OF  
 LOTS 4, 5 AND 6 BLOCK 3 PLAT-A  
 THE  
 SUTHERLIN LAND  
 AND  
 WATER CO.  
 DOUGLAS COUNTY OREGON

Scale - 200' = 1 inch



SURVEYED AND PLATTED BY ROBERTS & GERMOND ENGINEERS 1908, FILED JAN. 6, 1909  
 (SGD) E. H. LENOX  
 COUNTY CLERK

APPROVED JAN. 6, 1909 (SGD) FRANK. L. CALKINS, ASSESSOR  
 APPROVED JAN. 6, 1909 (SGD) C. E. ROBERTS, COUNTY SURVEYOR  
 APPROVED JAN. TERM 1909 (SGD) G. W. WONACOTT, CO. JUDGE.

See "Amended  
 Plat of the Township  
 of Sutherlin"  
 Vol. 3 Pg 20

STATE OF OREGON }  
 COUNTY OF DOUGLAS } ss  
 I, BEN B. IRVING, COUNTY SURVEYOR OF DOUGLAS COUNTY OREGON DO HEREBY CERTIFY THAT THIS COPY OF "SUBDIVISION OF LOTS 4, 5 AND 6  
 BLOCK 3 PLAT-A - THE SUTHERLIN LAND AND WATER CO." IS A TRUE AND CORRECT COPY OF THE ORIGINAL PLAT AS FILED IN THE OFFICE OF THE  
 COUNTY CLERK AND IS MADE IN COMPLIANCE WITH CHAPTER 92 OREGON LAWS 1953 SEC. 92-130.

*Ben B. Irving*  
 COUNTY SURVEYOR

SUBSCRIBED AND SWORN TO BEFORE ME THIS 26 DAY OF January 1955.

*Chas Doerner*  
 COUNTY CLERK

STATE OF OREGON }  
 COUNTY OF DOUGLAS } ss  
 I, CHAS. DOERNER COUNTY CLERK OF DOUGLAS COUNTY OREGON DO HEREBY CERTIFY THAT THE FOREGOING COPY OF PLAT HAS BEEN BY  
 ME COMPARED WITH THE ORIGINAL THEREOF THAT IT IS A TRUE AND CORRECT COPY THEREFROM AND OF THE WHOLE THEREOF AS THE SAME  
 APPEARS ON FILE IN MY OFFICE AND CUSTODY.  
 WITNESS MY HAND AND OFFICIAL SEAL THIS 26 DAY OF January 1955.

*Chas Doerner*  
 COUNTY CLERK