

V01BP54

# PLAT-C- ROSEBURG HOME-ORCHARD TRACTS DOUGLAS COUNTY. OREGON.

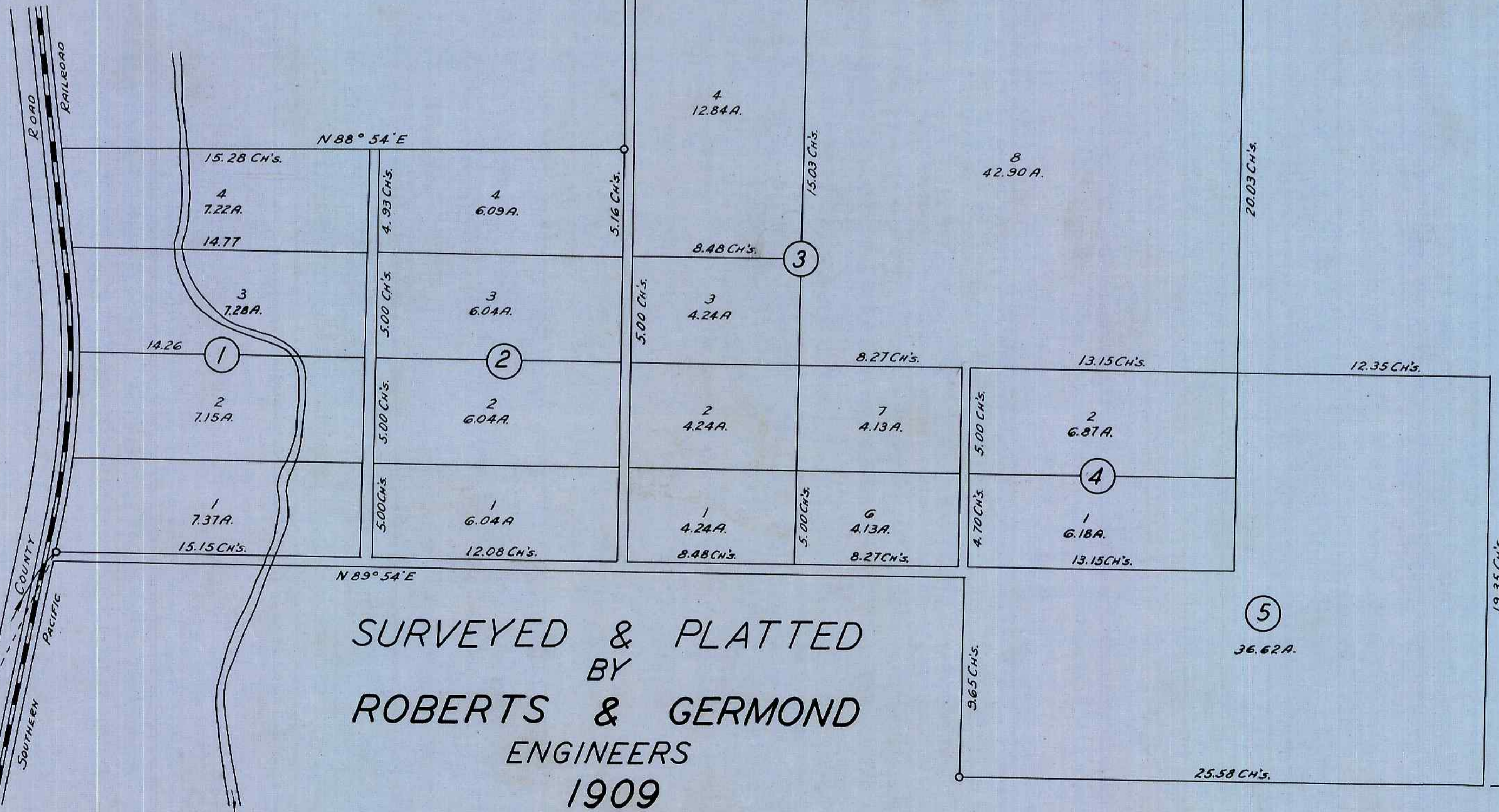
STATE OF OREGON } S.S.  
COUNTY OF DOUGLAS }

I, ROY AGEE, COUNTY CLERK OF DOUGLAS COUNTY, OREGON, DO HEREBY CERTIFY THAT THE FOREGOING COPY OF PLAT HAS BEEN BY ME COMPARED WITH THE ORIGINAL THEREOF, THAT IT IS A TRUE AND CORRECT COPY THEREFROM, AND OF THE WHOLE THEREOF, AS THE SAME APPEARS ON FILE IN MY OFFICE AND CUSTODY.

12<sup>th</sup> DAY OF DECEMBER, 1952.

*Roy Agée*  
COUNTY CLERK

SCALE 1 INCH = 5 CH'S



SURVEYED & PLATTED  
BY  
ROBERTS & GERMOND  
ENGINEERS  
1909

FILED  
APR. 24 1909.  
E. H. LENOX (SGD.)  
COUNTY CLERK

1/4 COR. BET.  
SECS. 32 & 33

V01BP54