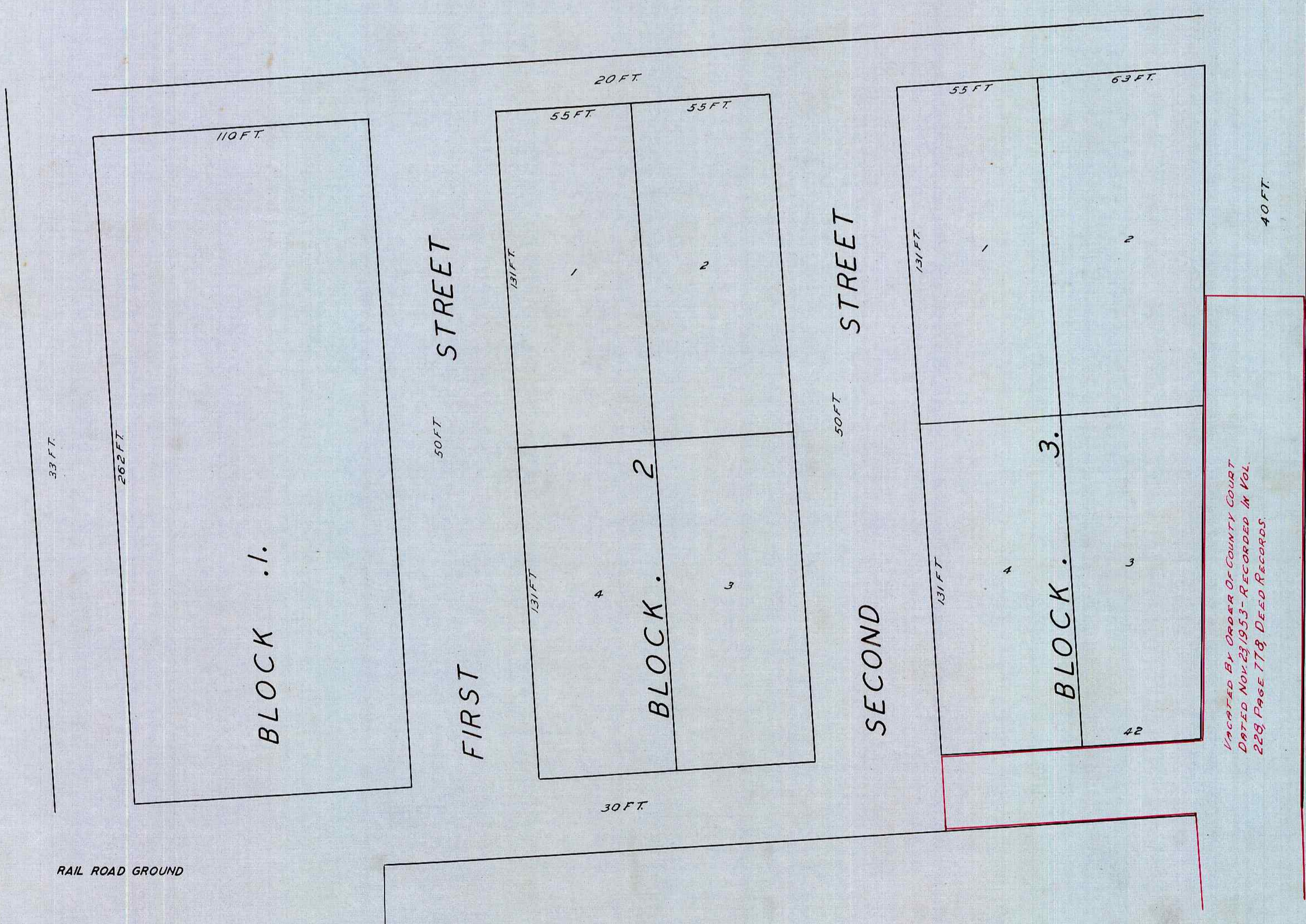
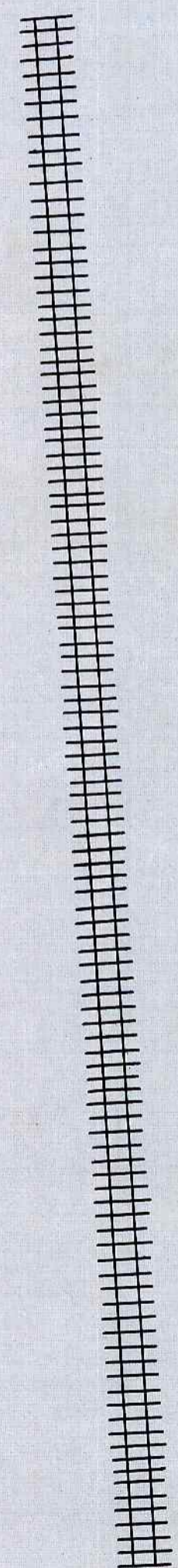


REPLATTING OF LOT 1 BLOCK 2 APPLEGATE'S ADDITION TO YONCALLA

APPROVED BY GEO. W. STALEY, CO. ASSESSOR ----- FEB 24, 1906
" " OSCAR EDWARDS, CO. SURVEYOR ----- " 21, 1906
" " COUNTY COURT ----- MAY 8, 1906 O.F. THIEL
FILED FEB. 21ST } 1906
RECORDED MAR. 8 }
SCALE: 1" = 33'
(SGD) Z. N. AGEE, COUNTY CLERK



STATE OF OREGON }
COUNTY OF DOUGLAS } ss
I, BEN B. IRVING, COUNTY SURVEYOR OF DOUGLAS
COUNTY OREGON DO HEREBY CERTIFY THAT THIS COPY
OF 'REPLATTING OF LOT 1, BLOCK 2 APPLEGATE'S
ADDITION TO YONCALLA' IS A TRUE AND CORRECT
COPY OF THE ORIGINAL PLAT AS FILED IN THE OFFICE
OF THE COUNTY CLERK AND IS MADE IN COMPLIANCE
WITH CHAPTER 92 OREGON LAWS 1953, SEC 92-130.

Ben B. Irving
COUNTY SURVEYOR

SUBSCRIBED AND SWORN TO BEFORE ME THIS 29th
DAY OF December 1954.

Chas Doerner
COUNTY CLERK

STATE OF OREGON }
COUNTY OF DOUGLAS } ss
I, CHAS. DOERNER, COUNTY CLERK OF DOUGLAS
COUNTY OREGON DO HEREBY CERTIFY THAT THE
FOREGOING COPY OF PLAT HAS BEEN BY ME COMPARED
WITH THE ORIGINAL THEREOF THAT IT IS A TRUE AND
CORRECT COPY THEREFROM AND OF THE WHOLE
THEREOF AS THE SAME APPEARS ON FILE IN MY
OFFICE AND CUSTODY.

WITNESS MY HAND AND OFFICIAL SEAL THIS
29th DAY OF December 1954

Chas Doerner
COUNTY CLERK

ACCEPTED BY ORDER OF COUNTY COURT
DATED NOV. 23, 1953 - RECORDED IN VOL.
228 PAGE 778 DEED RECORDS.