

NOTE: ALSO SEE DUPLICATE MAP FILED DEC. 5, 1910 IN VOL. I, PAGE 57.

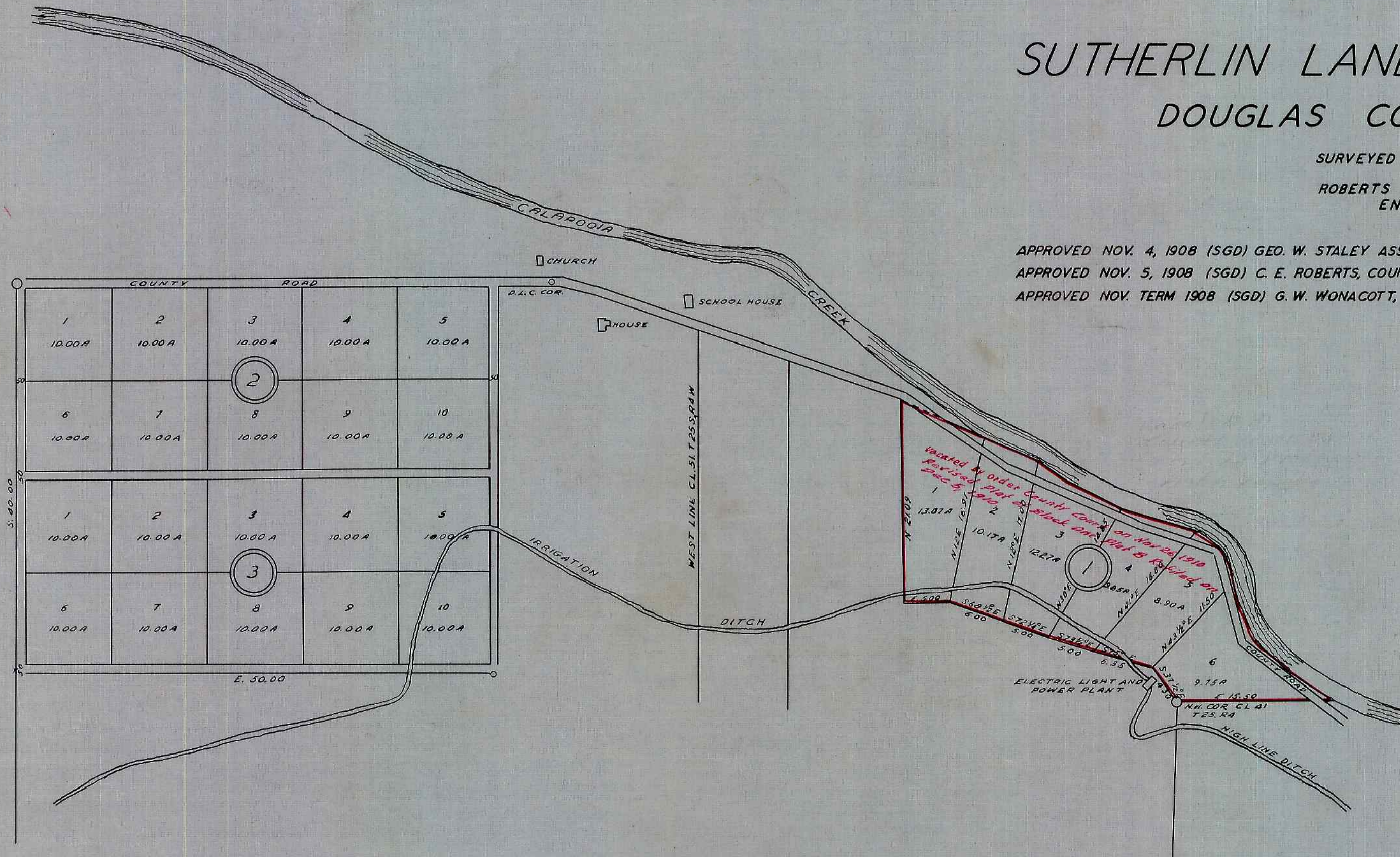
PLAT-B- THE SUTHERLIN LAND AND WATER CO. DOUGLAS COUNTY OREGON

SURVEYED AND PLATTED
BY
ROBERTS & GERMOND
ENGINEERS
1908

APPROVED NOV. 4, 1908 (SGD) GEO. W. STALEY ASSESSOR
APPROVED NOV. 5, 1908 (SGD) C. E. ROBERTS, COUNTY SURVEYOR
APPROVED NOV. TERM 1908 (SGD) G. W. WONACOTT, COUNTY JUDGE

FILED NOV. 4, 1908
(SGD) E. H. LENOX
COUNTY CLERK

N.W. COR. OF
C.L. NO. 49
T25S, R5W



STATE OF OREGON }
 COUNTY OF DOUGLAS } ss
 I, CHAS. DOERNER COUNTY CLERK OF DOUGLAS COUNTY OREGON DO HEREBY CERTIFY
 THAT THE FOREGOING COPY OF PLAT HAS BEEN BY ME COMPARED WITH THE ORIGINAL
 THEREOF THAT IT IS A TRUE AND CORRECT COPY THEREFROM AND OF THE WHOLE
 THEREOF AS THE APPEARS ON FILE IN MY OFFICE AND CUSTODY.
 WITNESS MY HAND AND OFFICIAL SEAL THIS 26 DAY OF January
 1955.

Chas Doerner
 COUNTY CLERK

STATE OF OREGON }
 COUNTY OF DOUGLAS } ss
 I, BEN B. IRVING COUNTY SURVEYOR OF DOUGLAS COUNTY OREGON DO HEREBY CERTIFY THAT THIS COPY OF
 "PLAT-B- SUTHERLIN LAND AND WATER CO" IS A TRUE AND CORRECT COPY OF THE ORIGINAL PLAT AS FILED IN THE
 OFFICE OF THE COUNTY CLERK AND IS MADE IN COMPLIANCE WITH CHAPTER 92 OREGON LAWS 1953 SEC. 92-130

Ben B. Irving
 COUNTY SURVEYOR

SUBSCRIBED AND SWORN TO BEFORE ME THIS 26 DAY OF January 1955.

Chas Doerner
 COUNTY CLERK

SCALE - 1"=10 CHS