

PLAT OF LOOKING GLASS

H. G. CROW
TO
TOWN OF LOOKING GLASS

MAP OF THE TOWN OF LOOKING GLASS LOCATED IN THE NORTH EAST CORNER OF THE N. E. 1/4 OF THE S. E. 1/4 OF SECTION 35 OF TOWNSHIP 27 S. IN RANGE 7 W. IN WILLAMETT MERIDIAN IN DOUGLAS COUNTY OREGON. THE STREETS AND ALLEYS OF WHICH ARE HEREBY DONATED FOR PUBLIC USE. THE MAGNETIC VARIATION BEING THE SAME AS IN THE CONGRESSIONAL SURVEY. THE STREETS BEING 60 FEET WIDE AND BLOCKS 160 FEET SQUARE, WITH FOUR LOTS IN EACH BLOCK NO. FROM N. E. CORNER, LEFT.

WITNESS MY HAND AND SEAL THIS 27-DAY OF DECEMBER A. D. 1877.
WITNESS
A. H. KENNEDY

(SGD) HENRY G. CROW
PROPRIETOR (SEAL)

RECORDED THE FOREGOING JAN. 30, 1878
(SGD) L. L. WILLIAMS, CO. CLERK

NOTE- THE DEDICATION SHOWN HEREON IS A COPY THEREOF AS SHOWN IN VOL. 9, PAGE 438 DEED RECORDS OF DOUGLAS COUNTY OREGON.

STATE OF OREGON }
COUNTY OF DOUGLAS } SS

I, BEN B. IRVING COUNTY SURVEYOR OF DOUGLAS COUNTY OREGON DO HEREBY CERTIFY THAT THIS COPY OF "PLAT OF LOOKING GLASS" IS A TRUE AND CORRECT COPY OF THE ORIGINAL PLAT AS FILED IN THE OFFICE OF THE COUNTY CLERK AND IS MADE IN COMPLIANCE WITH CHAPTER 92 OREGON LAWS 1953, SEC. 92-130.

Ben B. Irving
COUNTY SURVEYOR

SUBSCRIBED AND SWORN TO BEFORE ME THIS 26 DAY OF January 1955.

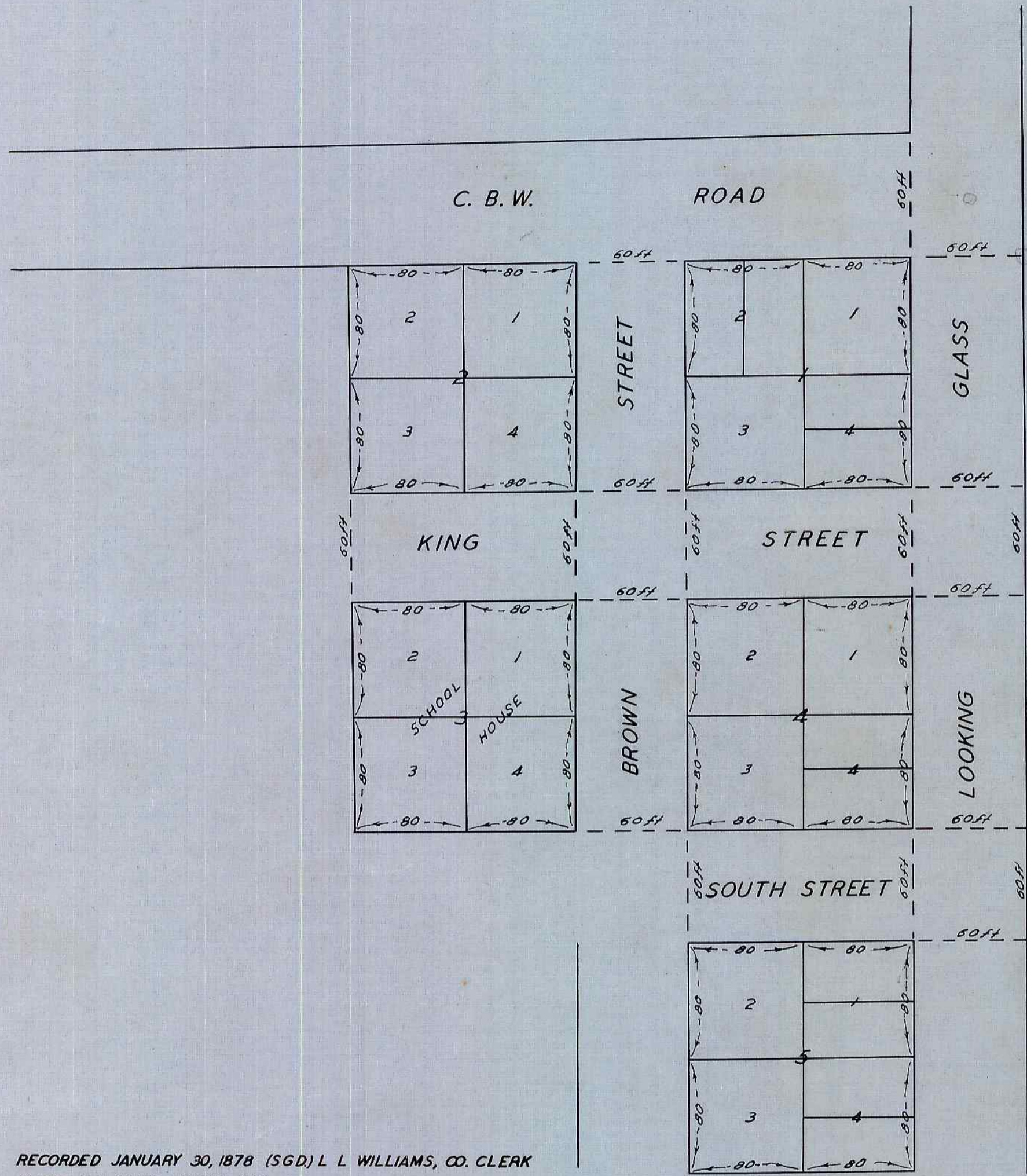
Chas Doerner
COUNTY CLERK

STATE OF OREGON }
COUNTY OF DOUGLAS } SS

I, CHAS. DOERNER COUNTY CLERK OF DOUGLAS COUNTY OREGON DO HEREBY CERTIFY THAT THE FOREGOING COPY OF PLAT HAS BEEN BY ME COMPARED WITH THE ORIGINAL THEREOF THAT IT IS A TRUE AND CORRECT COPY THEREFROM AND OF THE WHOLE THEREOF AS THE SAME APPEARS ON FILE IN MY OFFICE AND CUSTODY.

WITNESS MY HAND AND OFFICIAL SEAL THIS 26 DAY OF January 1955.

Chas Doerner
COUNTY CLERK



RECORDED JANUARY 30, 1878 (SGD) L. L. WILLIAMS, CO. CLERK
NOTE: SEE DEED RECORD VOL. 9, P 438
"CROW DEED" VOL. 9-438.