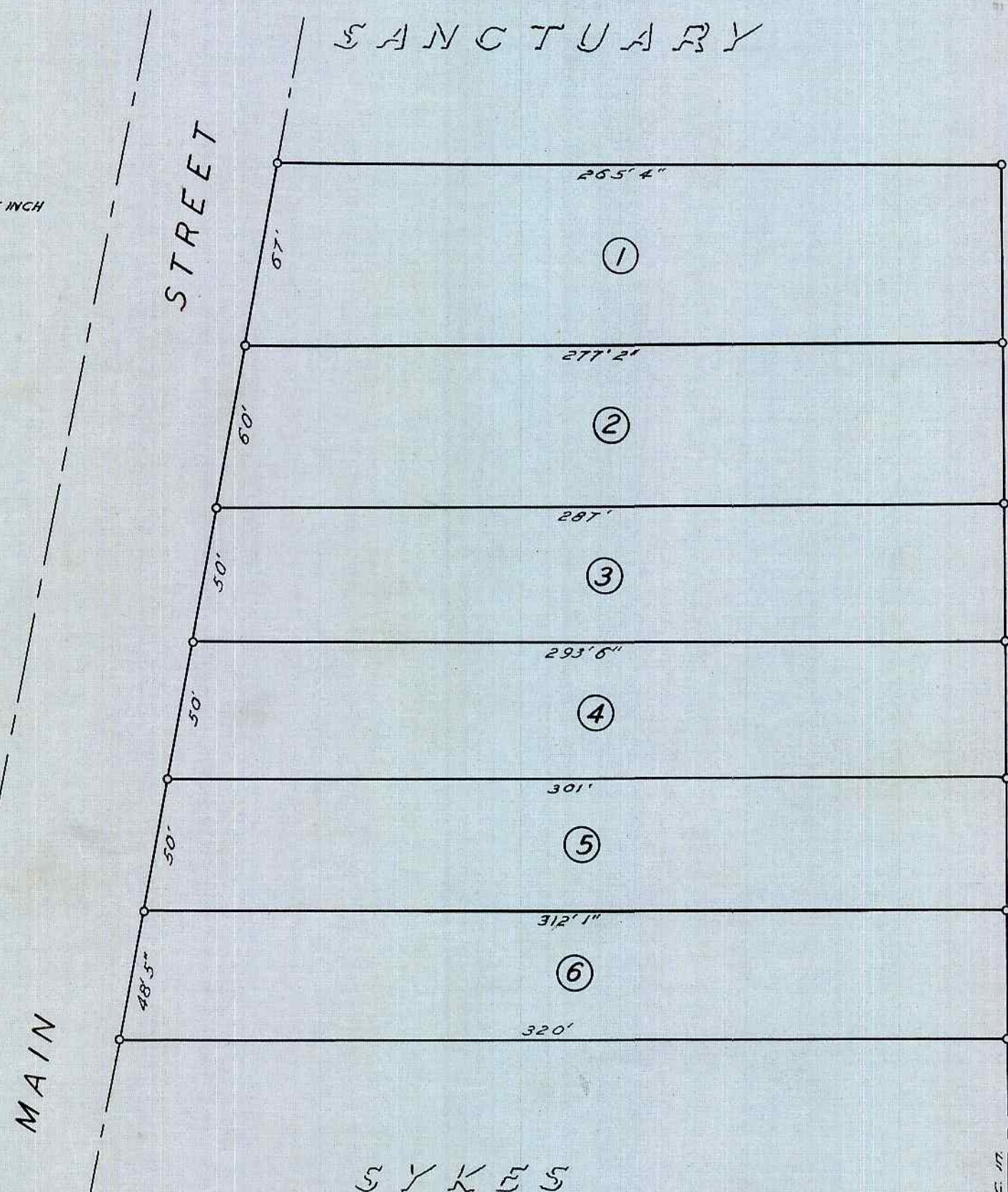
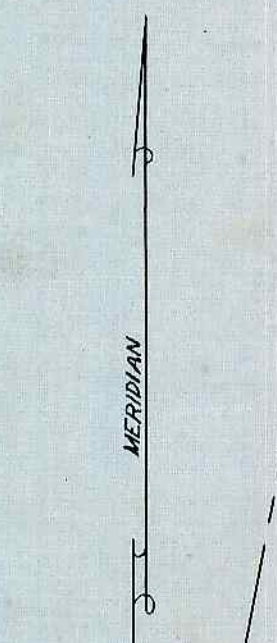


CANNON'S ADDITION TO ROSEBURG OR.

SCALE: 50 = ONE INCH



703' 6" S. 70' S. E. Cor. of a Rose B.C. in T. 27 S. R. 5 W. NW

STATE OF OREGON }
 COUNTY OF DOUGLAS } ss
 I, BEN B. IRVING, COUNTY SURVEYOR OF DOUGLAS COUNTY OREGON DO HEREBY CERTIFY THAT THIS COPY OF "CANNON'S ADDITION TO ROSEBURG OR." IS A TRUE AND CORRECT COPY OF THE ORIGINAL PLAT AS FILED IN THE OFFICE OF THE COUNTY CLERK AND IS MADE IN COMPLIANCE WITH CHAPTER 92 OREGON LAWS 1953, SEC 92-130.

Ben B. Irving
 COUNTY SURVEYOR

SUBSCRIBED AND SWORN TO BEFORE ME THIS 29th DAY OF December 1954.

Chas Doerner
 COUNTY CLERK

FOR DEED OF THIS PLAT TO C. B. CANNON AND MARY ELLA CANNON, SEE VOLUME 42 PAGE 109 BOOK OF DEEDS.

FILED MAY 2nd 1902
 (SGD) Z. N. AGEE
 CO. CLERK

STATE OF OREGON }
 COUNTY OF DOUGLAS } ss
 I, CHAS. DOERNER, COUNTY CLERK OF DOUGLAS COUNTY OREGON DO HEREBY CERTIFY THAT THE FOREGOING COPY OF PLAT HAS BEEN BY ME COMPARED WITH THE ORIGINAL THEREOF, THAT IT IS A TRUE AND CORRECT COPY THEREFROM AND OF THE WHOLE THEREOF AS THE SAME APPEARS ON FILE IN MY OFFICE AND CUSTODY.
 WITNESS MY HAND AND OFFICIAL SEAL THIS 29th DAY OF December 1954.

Chas Doerner
 COUNTY CLERK