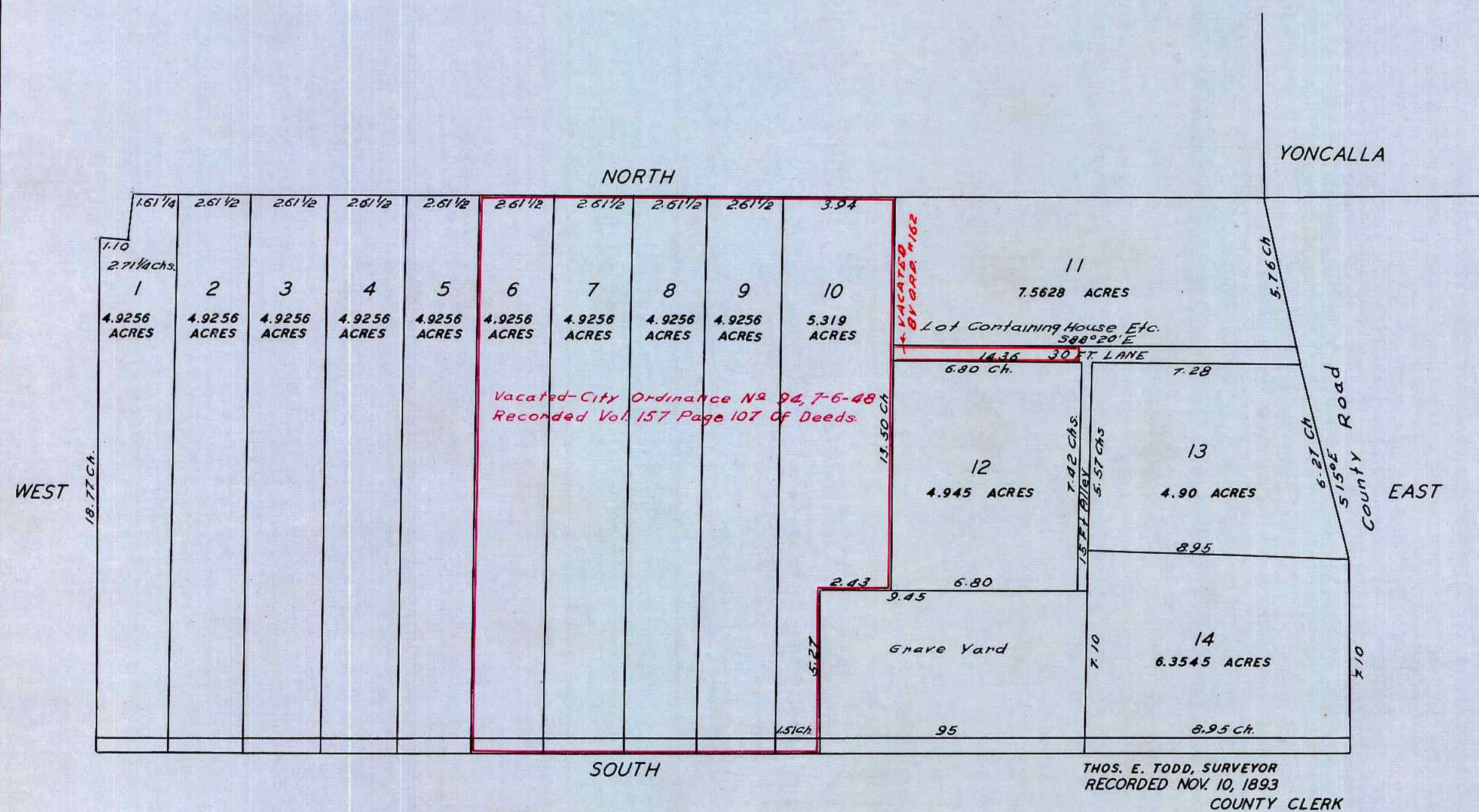


# SHUTREMS ADDITION TO YONCALLA



STATE OF OREGON }  
 COUNTY OF DOUGLAS } ss  
 I, CHAS. DOERNER, COUNTY CLERK OF DOUGLAS COUNTY OREGON DO HEREBY CERTIFY THAT THE FOREGOING COPY OF PLAT HAS BEEN BY ME COMPARED WITH THE ORIGINAL THEREOF, THAT IT IS A TRUE AND CORRECT COPY THEREFROM AND OF THE WHOLE THEREOF AS THE SAME APPEARS ON FILE IN MY OFFICE AND CUSTODY.  
 WITNESS MY HAND AND OFFICIAL SEAL THIS 13<sup>th</sup> DAY OF December 1954.

*Chas Doerner*  
 COUNTY CLERK

STATE OF OREGON }  
 COUNTY OF DOUGLAS } ss  
 I, BEN B. IRVING, COUNTY SURVEYOR OF DOUGLAS COUNTY OREGON, DO HEREBY CERTIFY THAT THIS COPY OF SHUTREMS ADDITION TO YONCALLA, IS A TRUE AND CORRECT COPY OF THE ORIGINAL PLAT AS FILED IN THE OFFICE OF THE COUNTY CLERK, AND IS MADE IN COMPLIANCE WITH CHAPTER 92 OREGON LAWS 1953, SEC. 92-130.

*Ben B. Irving*  
 COUNTY SURVEYOR

SUBSCRIBED AND SWORN TO BEFORE ME THIS 13<sup>th</sup> DAY OF December 1954.

*Chas Doerner*  
 COUNTY CLERK