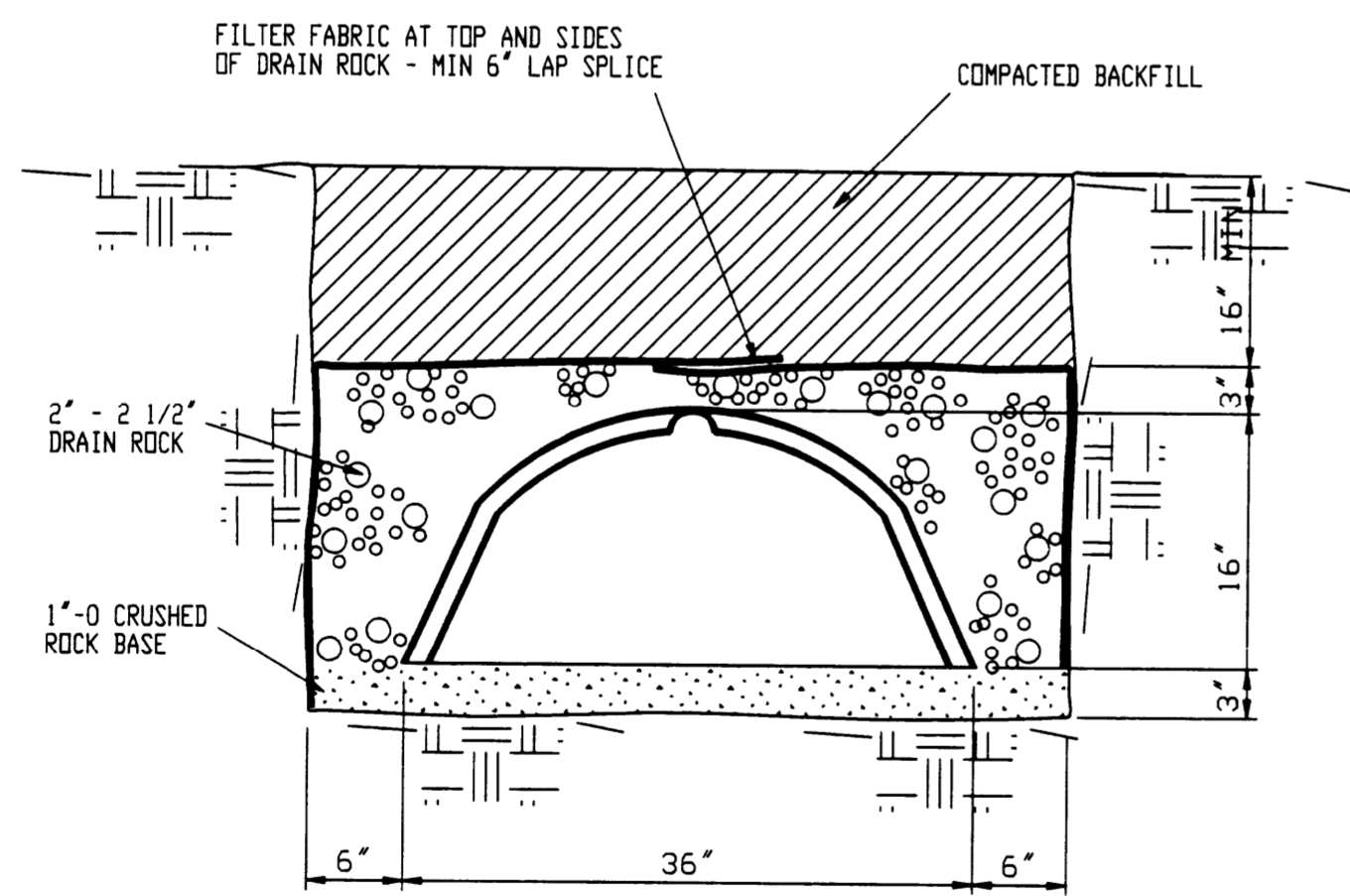


1  
2  
ELEVATION  
1" = 1' 0"

NOTE: LOT SITEWORK DEVELOPMENT TO CONTAIN AND TRANSPORT ALL RUNOFF FROM IMPERVIOUS SURFACES TO DETENTION SYSTEM ALL RUNOFF ENTERING DETENTION SYSTEM TO FIRST ENTER GRATED CATCH BASIN TO REMOVE LARGE OBJECTS AND SEDIMENT

FILED  
Date: 12/7/2012 By: *HLW*  
This survey consists of:  
Map: DS-143 thru DS-145  
Narrative: \_\_\_\_\_  
Corner Rpt: \_\_\_\_\_

DOUGLAS COUNTY  
SURVEYOR



2  
2  
INFILTRATOR SECTION  
1" = 1' 0"



EXPIRES 12-31-98

PROJECT:	BUCKROCK SUBDIVISION STORMWATER DETENTION AS-BUILTS	DATE:	NOVEMBER, 1997
OWNER:	BUCKROCK, INC.	REV. 1:	
SHEET TITLE:	DETENTION DETAILS	REV. 2:	
<b>BTS</b> ENGINEERING & SURVEYING, INC. 431 S.E. MAIN ST., ROSEBURG, OR 97470 PHONE (503) 673-0966 FAX (503) 673-0105	JOB #:	95-089	
	SHEET	3	OF 3