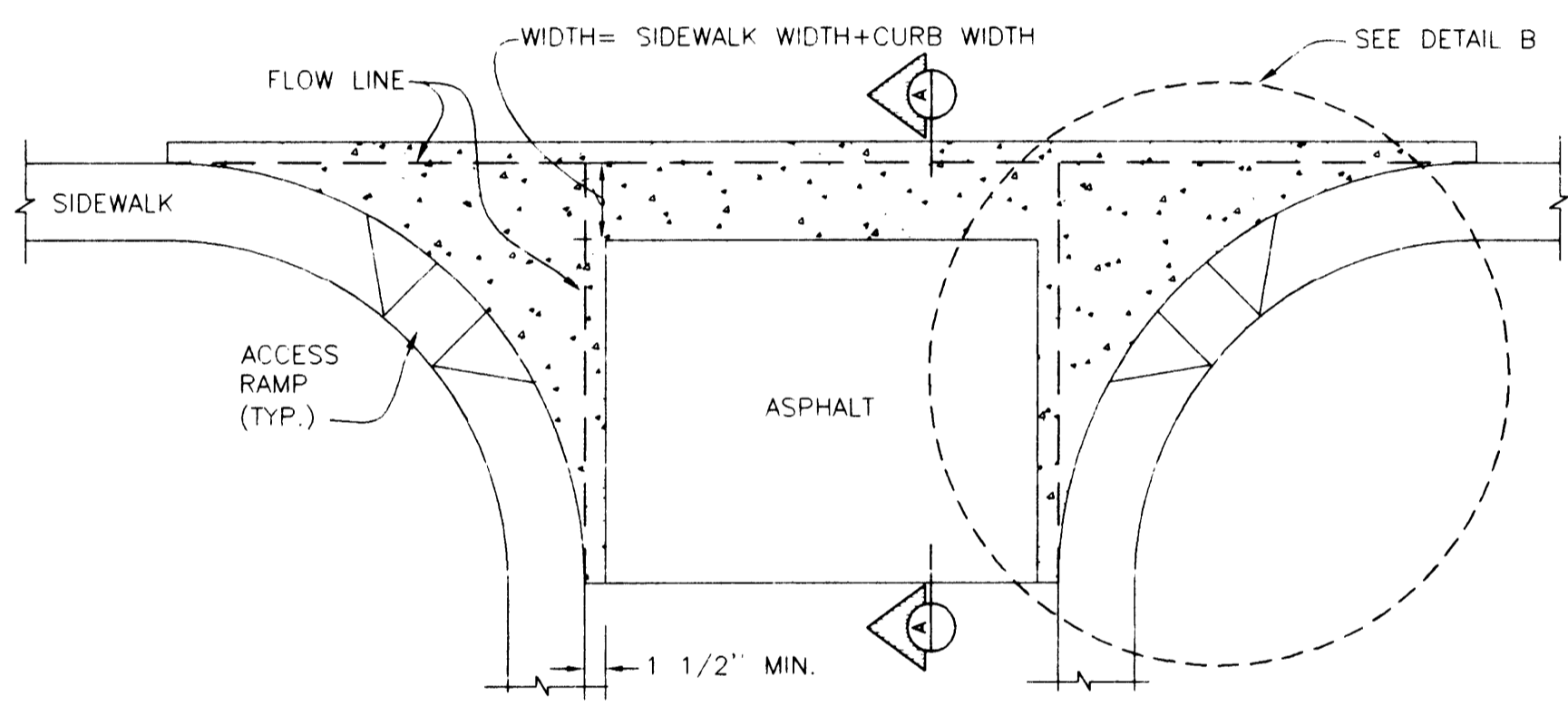
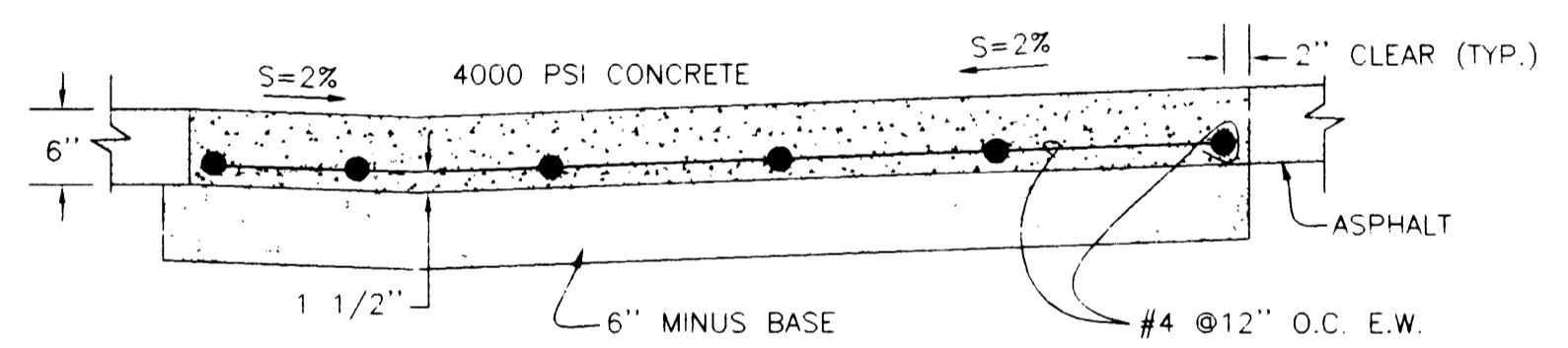


- *8.33% (1:12) MAXIMUM SLOPE ALLOWED BY AMERICANS w/DISABILITIES ACT (ADA)
 DEPRESSED CURB FOR ACCESS RAMP (SAR) RAMP GRADE = *8.33% (1:12) MAX. SLOPE (NO LIP)
- NOTES:**
 1. ALL RADII SHALL BE 3/4" (20MM) UNLESS OTHERWISE SHOWN
 2. ALL CONCRETE SHALL MEET STANDARD CONCRETE SPECS. [3300PSI (22.75MPA)]
 3. ALLOWABLE TOLERANCE FOR DEVIATION FROM TANGENT OR STRAIGHT LINES IN NON-CURVED SECTIONS SHALL NOT EXCEED 2MM/1M (1/4" PER 12") [WHEN A 2 METER STRAIGHT EDGE IS LAID UPON ANY SURFACE NOT IN A CURVE OR A GRADE CHANGE THE MAXIMUM GAP SHALL BE 4MM]

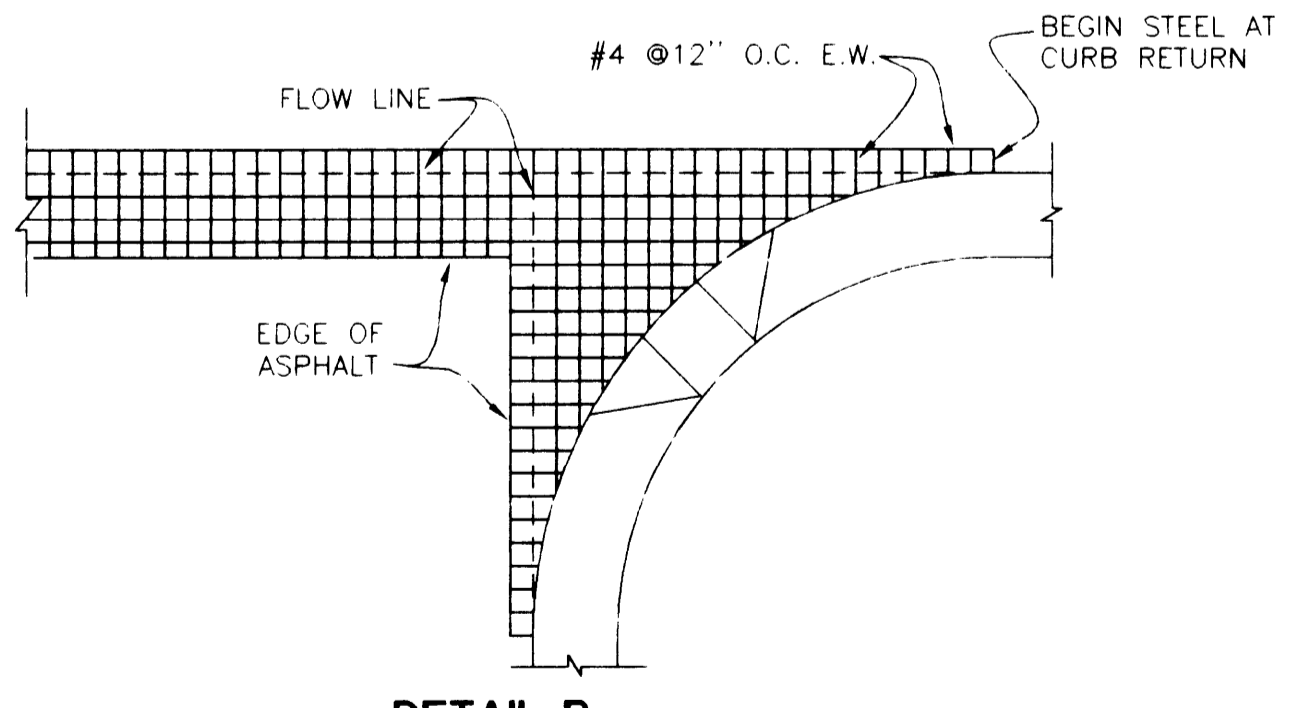
TYPICAL MONOLITHIC CURB AND GUTTER



PLAN VIEW

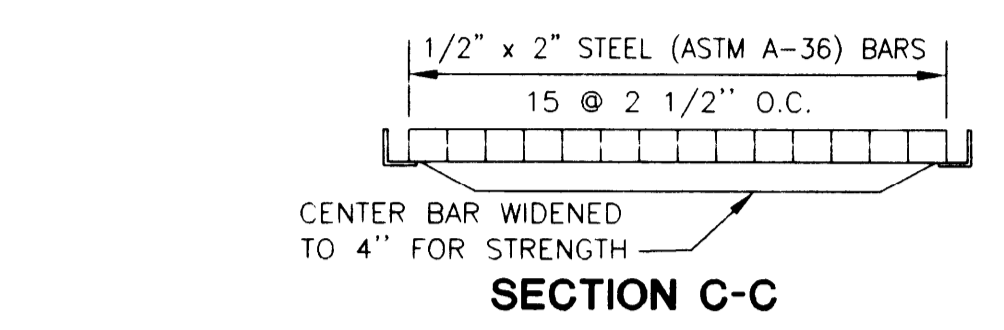


SECTION A-A

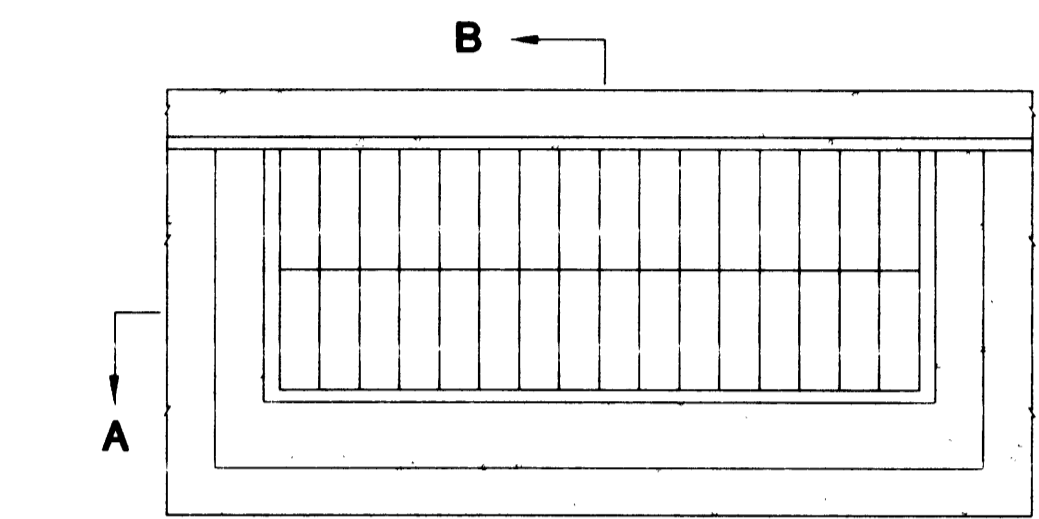


DETAIL B

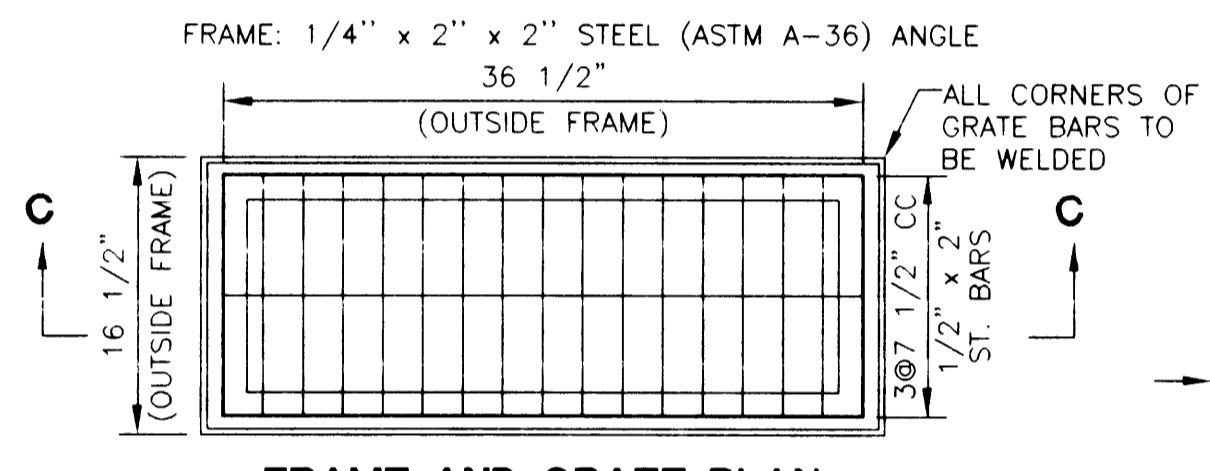
TYPICAL VALLEY GUTTER DETAIL



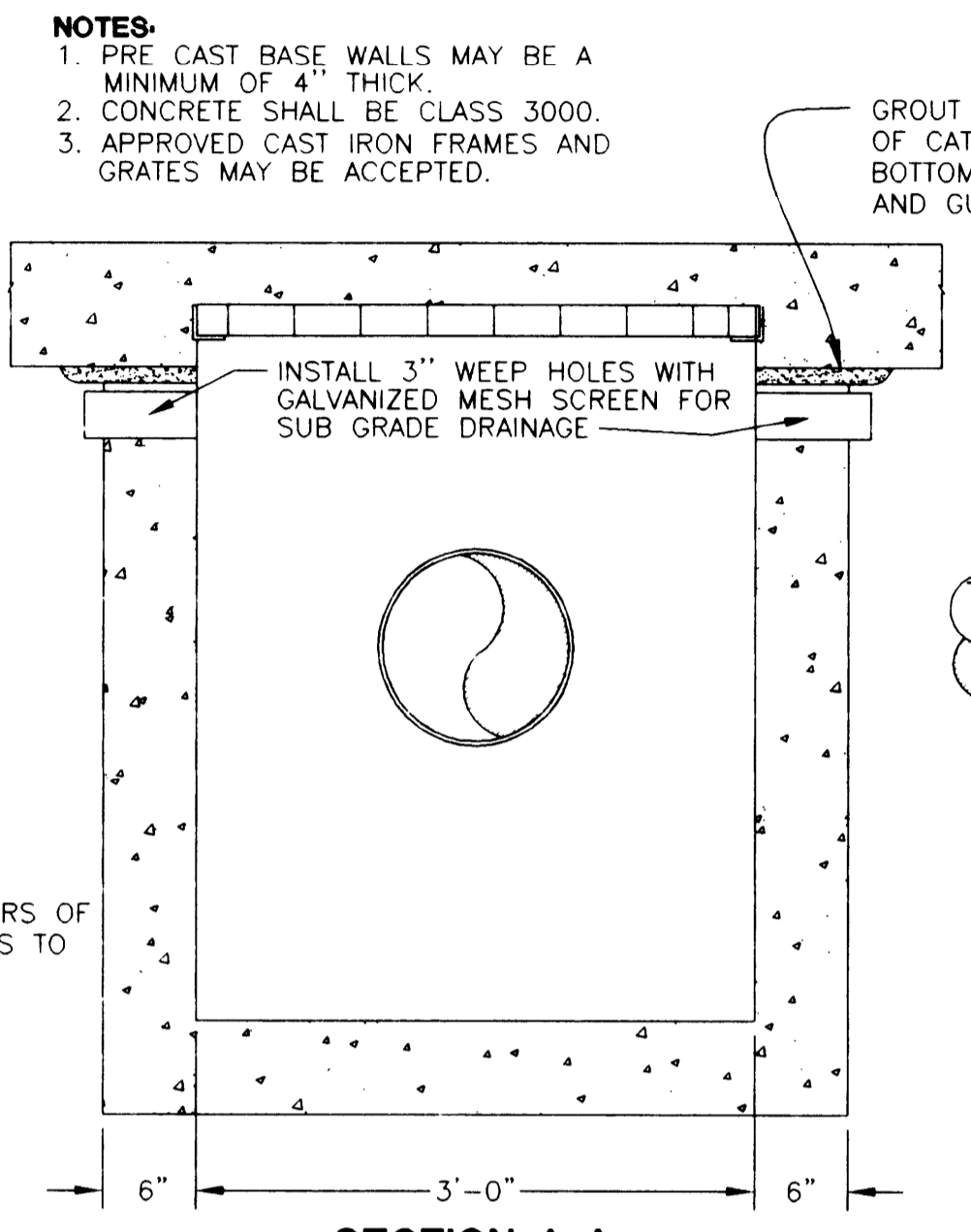
SECTION C-C



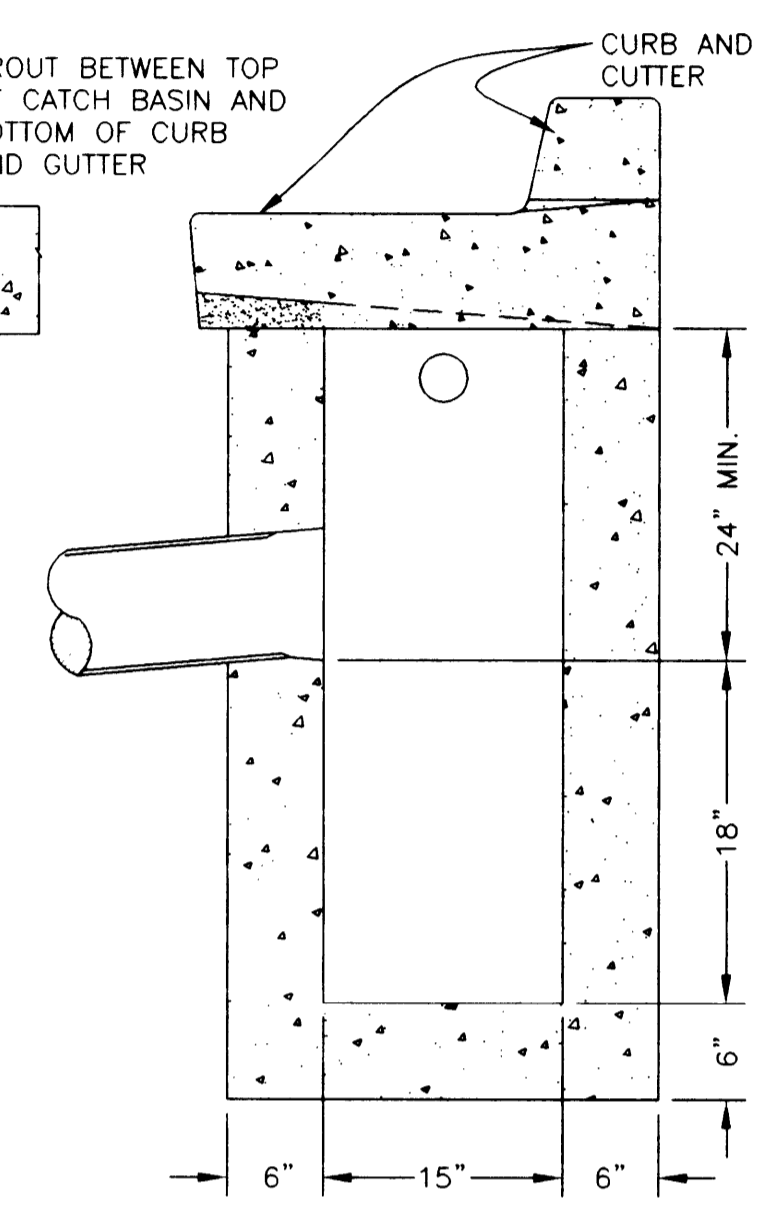
PLAN



FRAME AND GRATE PLAN

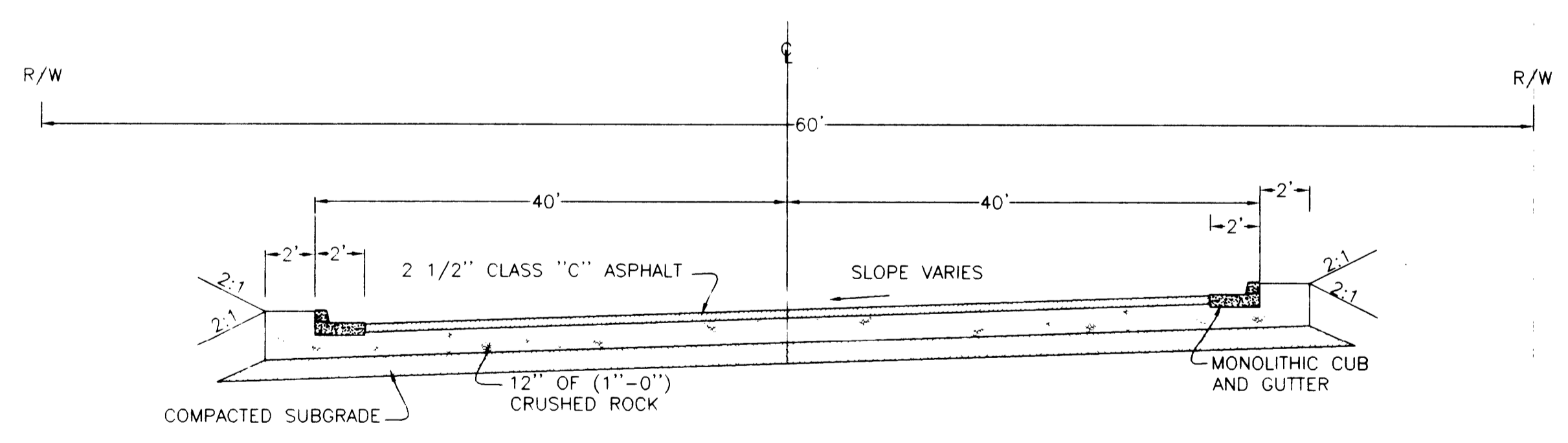


SECTION A-A



SECTION B-B

STANDARD CATCH BASIN

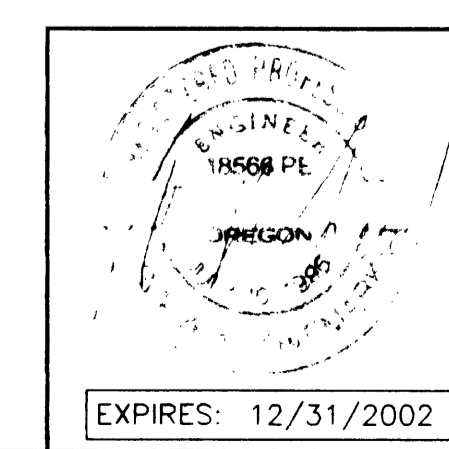


TYPICAL SHED ROAD SECTION

CALL BEFORE YOU DIG I
 ONE CALL: (800) 332-2344
 OAR 952-001-0010 THROUGH
 OAR 952-001-0090

i.e.
 ENGINEERING
 741 SE Jackson Street
 Roseburg, Oregon 97470
 PHONE (541) 673-0166
 FAX (541) 440-9392

Project Name: **GUYER SUBDIVISION**



Rev.	Date	Dwg	Description
1	8/21/01	KTG	AS-BUILTS

Title: GUYER SUBDIVISION	
DETAILS	
DES SNL	PROJECT NO. 152-25
DWG FLB	DATE: JUNE 6, 2001
CHK SNL	SCALE: NO SCALE
APP SNL	SHEET: 4 OF 5