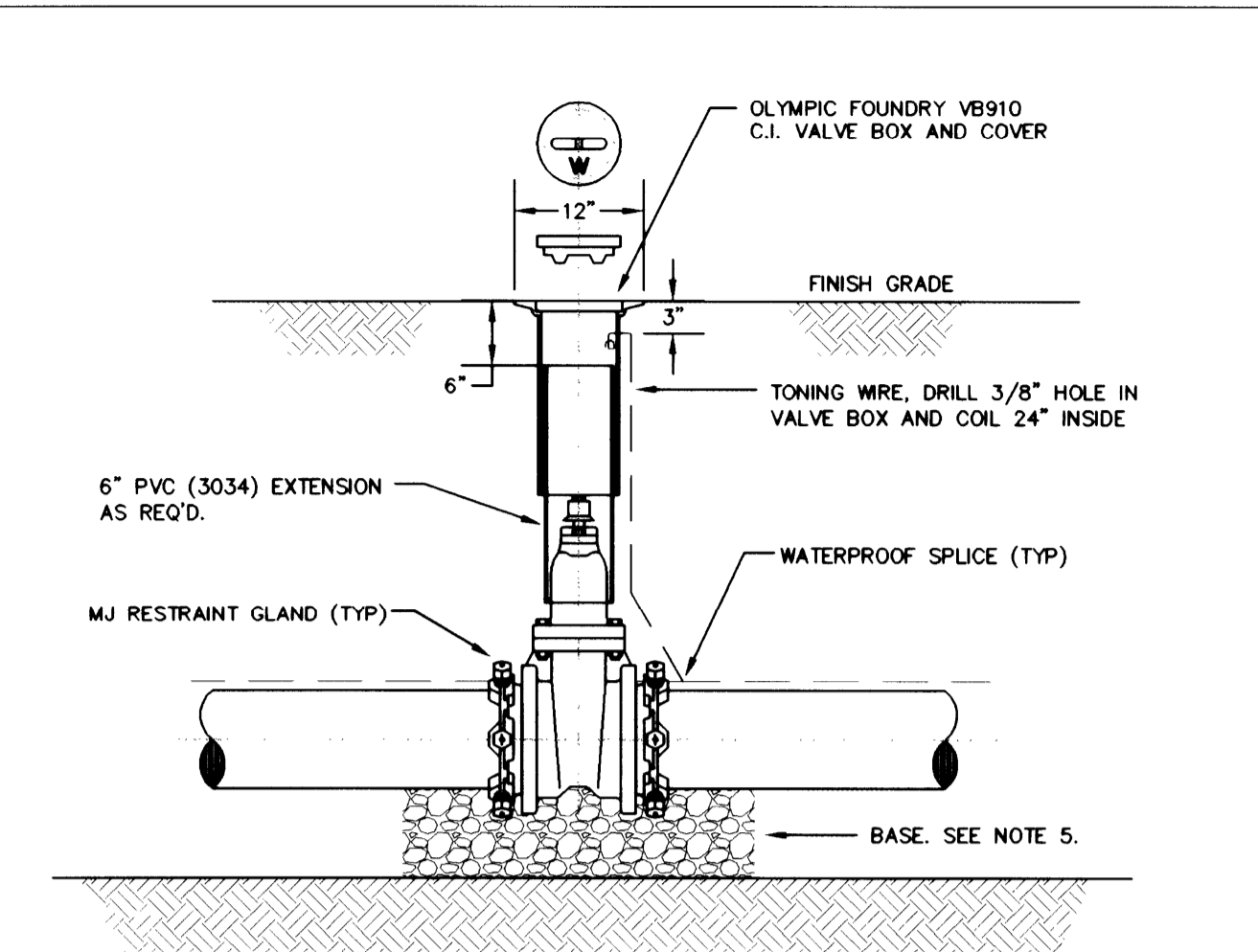


Tri City Water District
 215 N. Old Pacific Highway
 Myrtle Creek, Oregon 97457
 541.863.5276

TYPICAL WATERLINE TRENCH DETAILS

DETAIL NO. W-150
 8/20/03

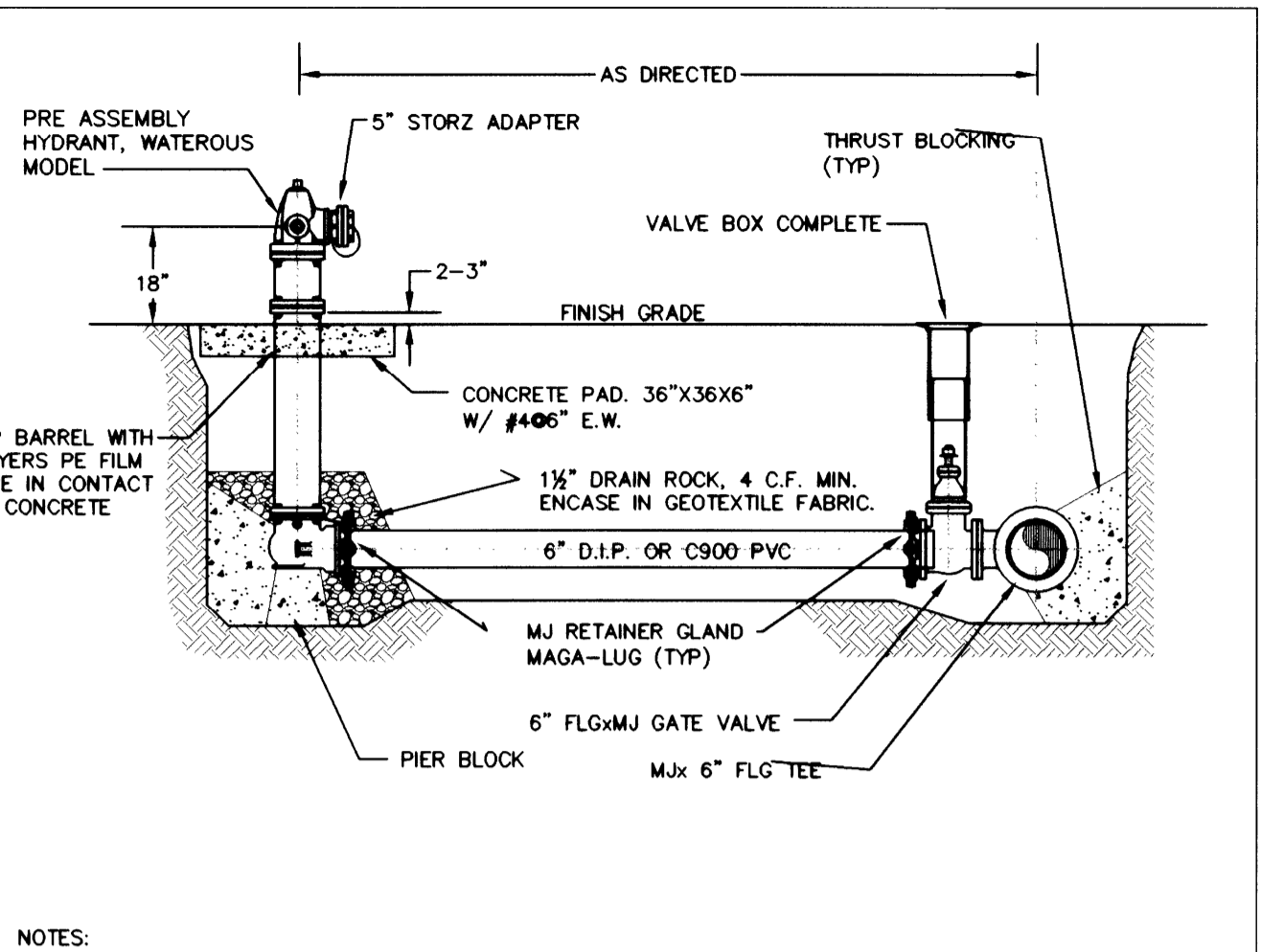


- NOTES:
1. VALVE BOX SHALL BE CENTERED OVER VALVE OPERATING NUT.
 2. PVC EXTENSION SHALL BEGIN AS CLOSE TO VALVE AS POSSIBLE AND SHALL EXTEND TO WITHIN 6" OF GROUND SURFACE.
 3. TOP OF VALVE BOX SHALL BE FLUSH WITH FINISH GRADE.
 4. VALVE EQUIPPED WITH 2" SQUARE OPERATING NUT LOCATED WITHIN 24" FROM GROUND SURFACE. SEE VALVE OPERATOR EXTENSION DETAIL WHERE REQUIRED.
 5. VALVES 12" AND SMALLER SHALL BE PROVIDED WITH CLASS B BASE. VALVES LARGER THAN 12" SHALL BE INSTALLED ON PRE CAST CONCRETE PIER BLOCK.
 6. NO PIPE JOINTS ALLOWED WITHIN 10' OF IN-LINE VALVES UNLESS JOINT RESTRAINT DEVICE PROVIDED.

Tri City Water District
 215 N. Old Pacific Highway
 Myrtle Creek, Oregon 97457
 541.863.5276

STANDARD WATER VALVE SETTING DETAIL

DETAIL NO. W-200
 8/20/03

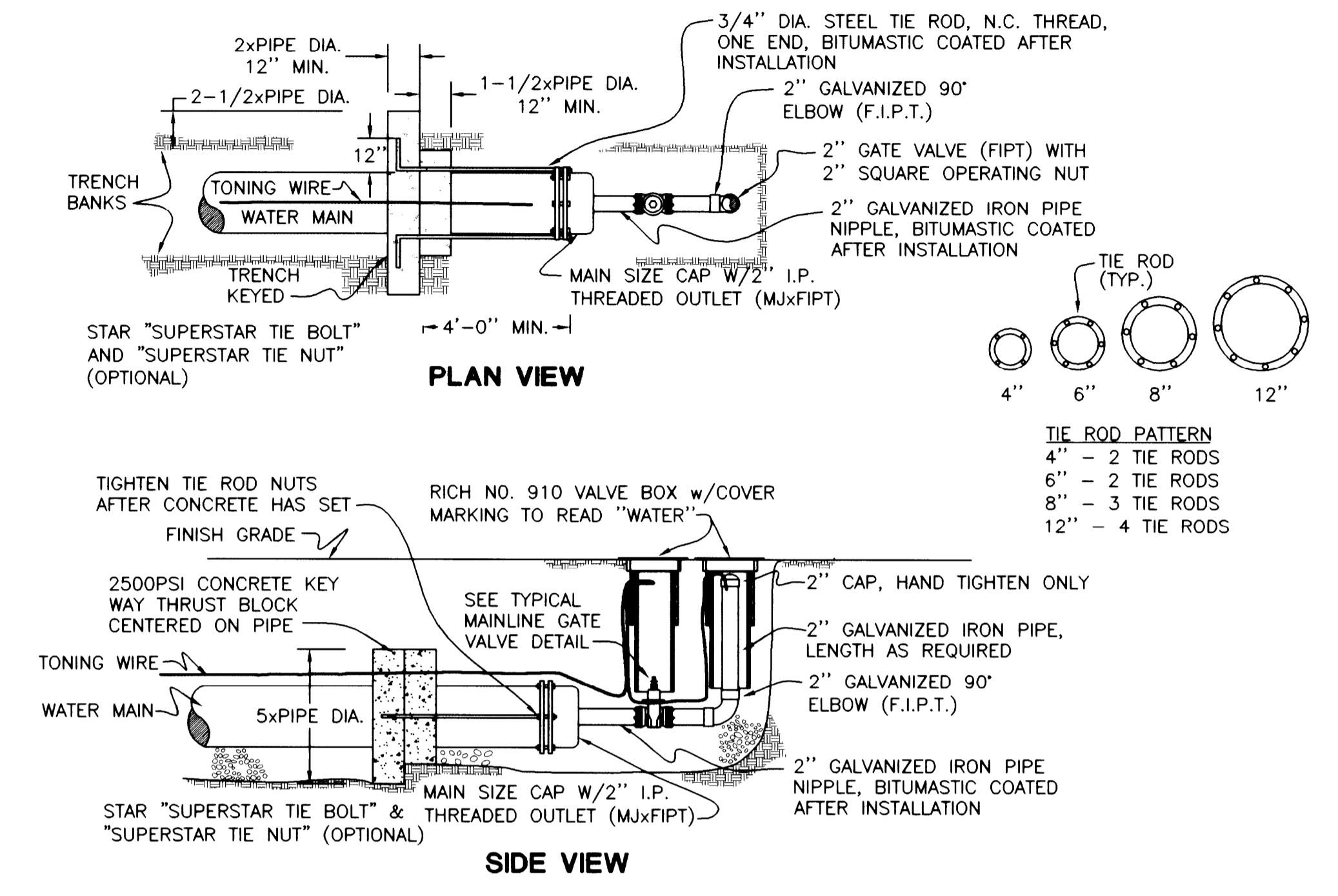


- NOTES:
1. FIELD VERIFY SPOOL LENGTHS AND HYDRANT BARREL LENGTH REQUIRED AT EACH HYDRANT. NO JOINTS ALLOWED WHERE SPOOL LENGTH IS LESS THAN 18 FEET.
 2. HYDRANT SHALL BE INSTALLED PLUMB.
 3. KEEP DRAIN HOLES CLEAR AND FREE TO DRAIN.
 4. SEE DETAILS FOR VALVE SETTING, THRUST BLOCKING, AND TRENCH.
 5. HYDRANTS, VALVES AND OTHER MATERIALS SHALL BE AS SPECIFIED IN DISTRICT'S STANDARDS MANUAL.
 6. A MINIMUM OF 36" OF CLEAR SPACE AROUND HYDRANTS IS REQUIRED PER UFC (NO POSTS, WALLS, SIGNS, ETC.). 5 FOOT MIN. DESIRED. THERE SHALL BE NO OBSTRUCTIONS DIRECTLY IN LINE WITH ANY OF THE PORTS OF A HYDRANT.
 7. HYDRANT PUMPER PORT SHALL FACE DIRECTION OF ACCESS.

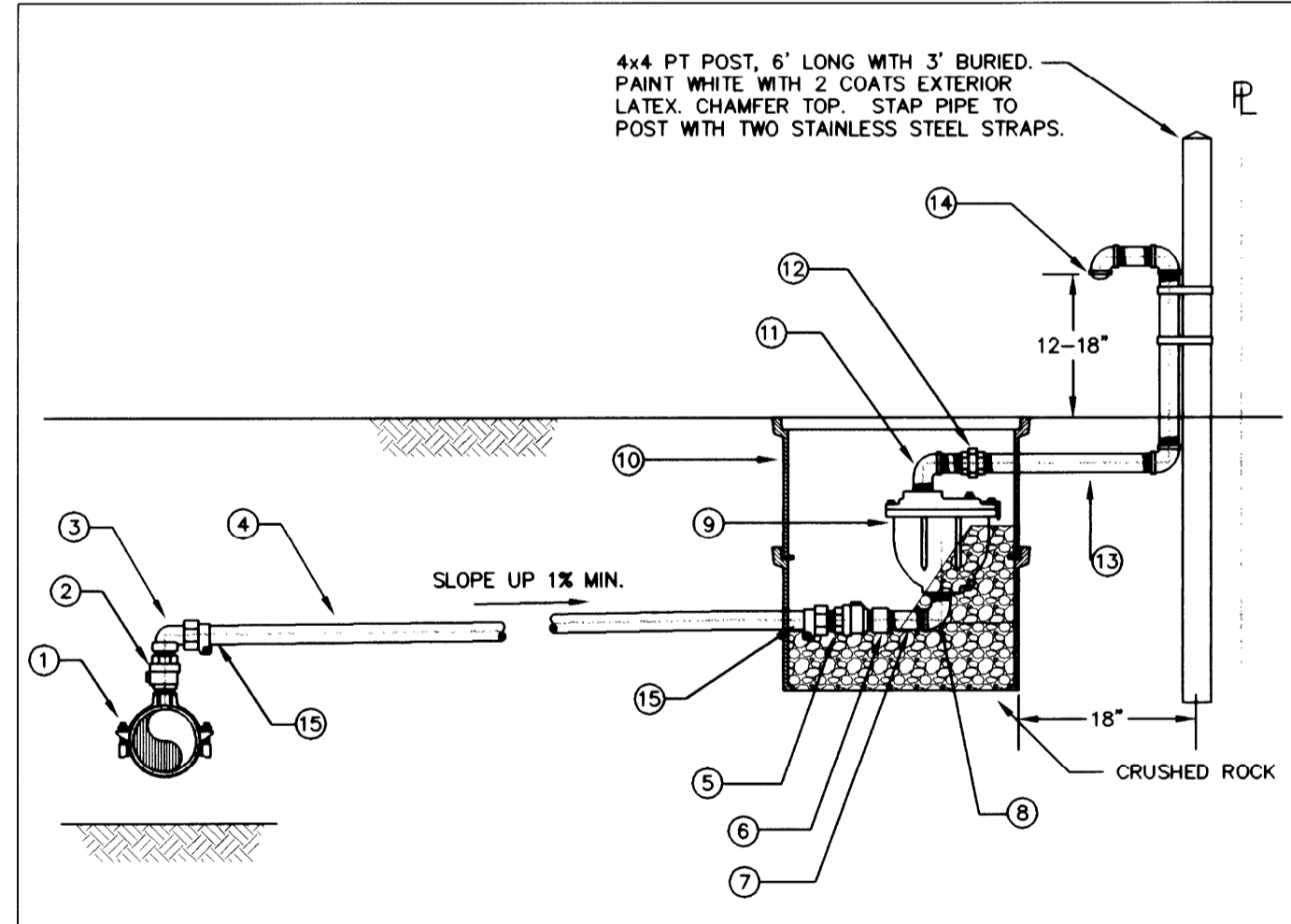
Tri City Water District
 215 N. Old Pacific Highway
 Myrtle Creek, Oregon 97457
 541.863.5276

STANDARD FIRE HYDRANT ASSEMBLY DETAIL

DETAIL NO. W-300
 8/20/03



TYPICAL 2" BLOWOFF ASSEMBLY DETAIL

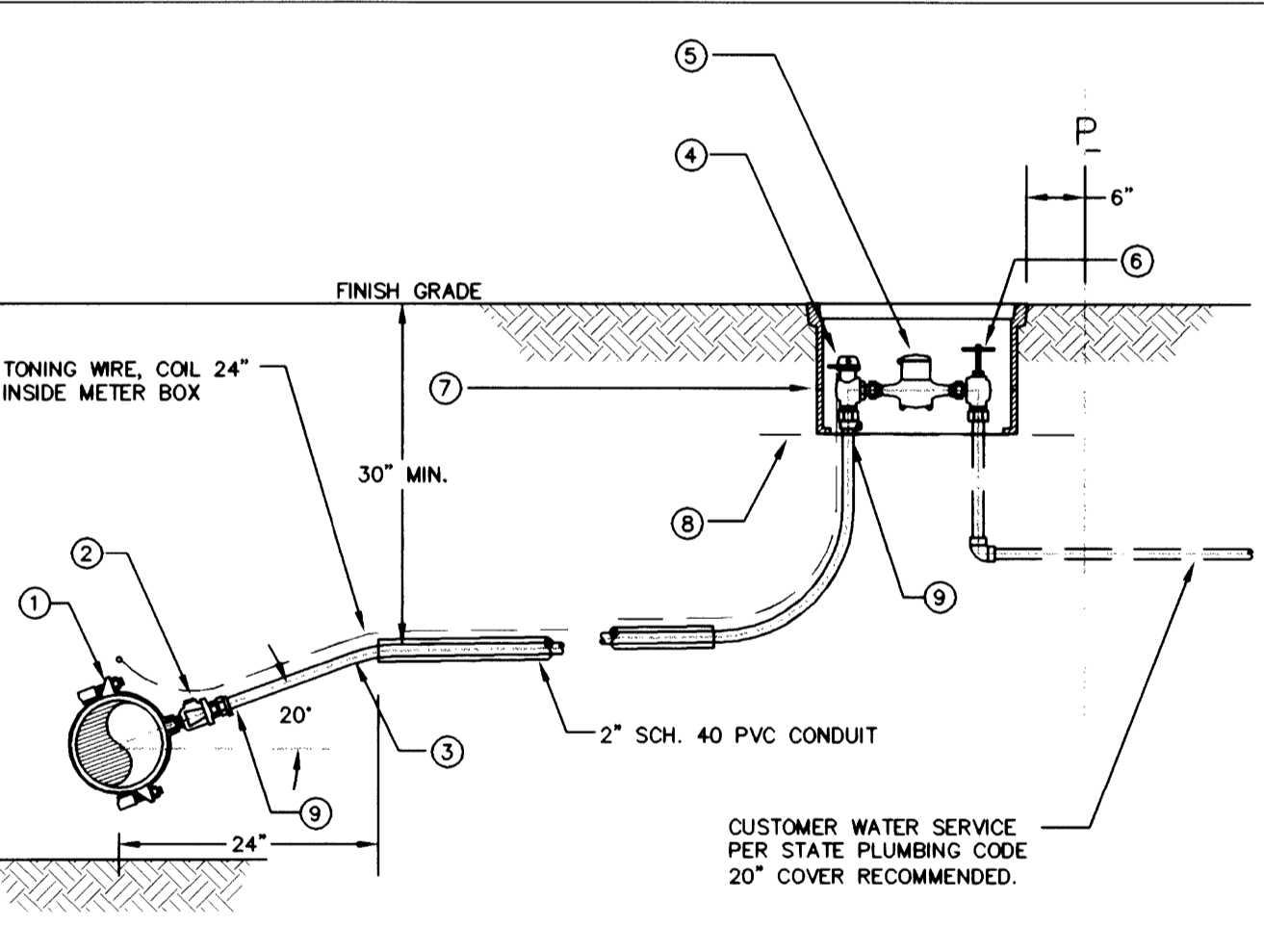


ITEM	SIZE	DESCRIPTION	SPECIFICATION
1	AS REQ'D	SADDLE	FORD/ROMAC 202BS, 2" FIP TAP
2	2"	BALL CORP. STOP	MIP IN x FIP OUT; FORD FB1700-7, MUELLER B-20046, MCDONALD 31498
3	2"	ELL COUPLING	MIP x PEP PACK JOINT; FORD L86-77-IDR7
4	2"	PIPE	HDPE (PE 3408), SDR 7, 200 PSI, IPS FITTING COMPATIBLE, NSF 61
5	2"	BALL CORP. STOP	PEP PACK JOINT x MIP; FORD FB1101-7, MCDONALD 4704B-33
6	2"	COUPLING	THREADED BRONZE COUPLING, SHORT
7	2"	NIPPLE	THREADED RED BRASS NIPPLE, 6" LONG
8	2"	STREET ELBOW	BRONZE 90° STREET ELBOW
9	2"	CAV	COMBINATION AIR VALVE; VAL-MATIC 202C, APCO 145C
10	30" x 18"	VALVE BOX (2)	MID-STATES PLASTICS; MSBCF1730-18XL (2) WITH ONE D.I. LID
11	2"	STREET ELBOW	GALV. 90° STREET ELBOW
12	2"	UNION	GALV. UNION
13	2"	VENT PIPE	GALV. PIPE AND FITTINGS AS SHOWN
14	2"	VENT	GALV. ELBOW WITH BRASS OR SS INSECT SCREEN
15	2"	STIFFENER	304 STAINLESS STEEL INSERT STIFFENER, FORD 70 SERIES

Tri City Water District
 215 N. Old Pacific Highway
 Myrtle Creek, Oregon 97457
 541.863.5276

2" COMBINATION AIR VALVE ASSEMBLY

DETAIL NO. W-500
 8/20/03



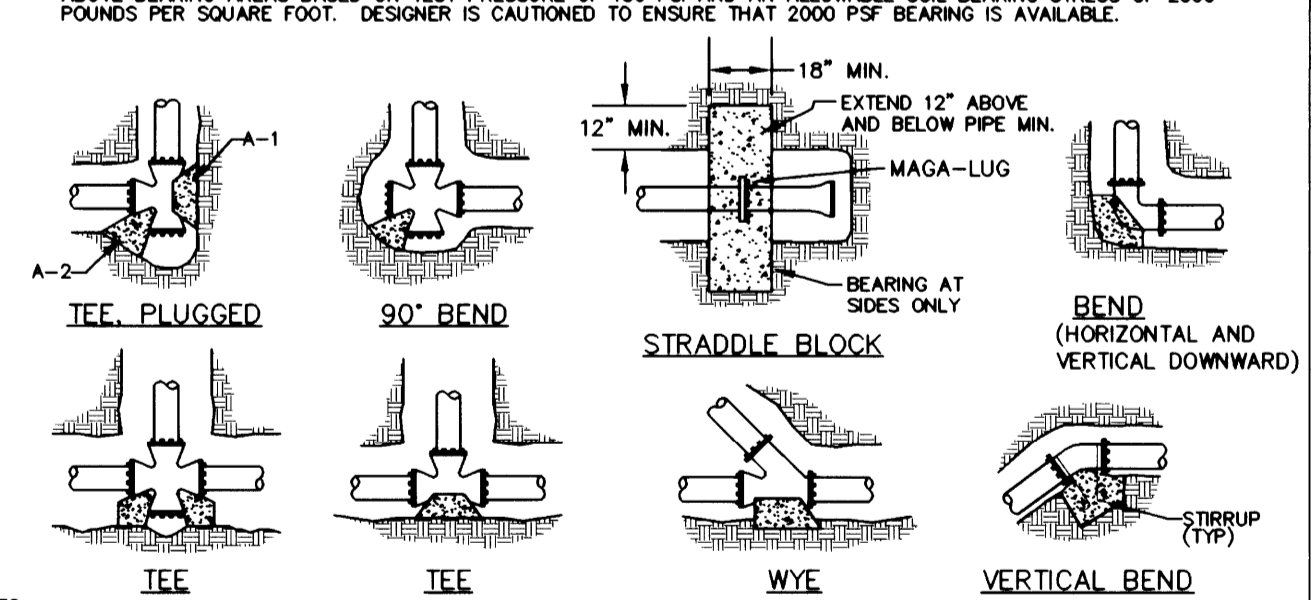
ITEM	SIZE	DESCRIPTION	SPECIFICATION
1	AS REQ'D	SADDLE	FORD/ROMAC 101BS, 3/4" FIP TAP
2	3/4"	BALL CORP. STOP	MIP x PEP PACK JOINT; FORD FB1101-3, MCDONALD 4704B-33
3	3/4"	SERVICE PIPE	HDPE (PE 3408), SDR 7, 200 PSI, IPS FITTING COMPATIBLE, NSF 61
4	3/4" OR 5/8"	ANGLE BALL METER VALVE	3/4" PEP PACK JOINT INLET x METER SWIVEL NUT OUTLET FORD BA63-332W OR BA63-232W, MCDONALD 4602B-33 OR 4642B-33
5	5/8" x 3/4"	WATER METER	INVENSYS SR-II, GALLON READ (TRI CITY SUPPLIES)
6	3/4"	SERVICE VALVE ANGLE GLOBE	METER SWIVEL NUT INLET x 3/4" FIP OUTLET FORD GA13-332 (TRI CITY SUPPLIES)
7	12" x 18"	METER BOX	MID-STATES PLASTICS; MSBCF 1118-12 WITH DUCTILE IRON READ LID
8	13" x 20"	FELT PAPER	90-LB FELT PAPER, ASPHALT SATURATED
9	3/4"	STIFFENER	304 STAINLESS STEEL INSERT STIFFENER, FORD 70 SERIES

Tri City Water District
 215 N. Old Pacific Highway
 Myrtle Creek, Oregon 97457
 541.863.5276

STANDARD 3/4" WATER SERVICE CONNECTION

DETAIL NO. W-600
 8/20/03

FITTING SIZE	(HORIZONTAL) BEARING AREA OF THRUST BLOCKS IN SQUARE FEET				(VERTICAL UP) VOLUME OF THRUST BLOCK IN CUBIC YARDS			
	TEE W/VE DEAD END AND HYDRANT	STRADDLE BLOCK	90° BEND	TEE PLUGGED ON RUN	45° BEND	22-1/2° BEND	11-1/4° BEND	90° BEND
4	1.0	1.0	1.4	1.0	1.4	0.8	0.4	0.2
6	2.1	2.1	3.0	2.1	3.0	1.6	0.9	0.5
8	3.8	3.8	5.4	3.8	5.4	2.9	1.5	0.8
10	5.9	5.9	8.4	5.9	8.4	4.5	2.3	1.2
12	8.5	8.5	12.0	8.5	12.0	6.5	3.3	1.7
14	11.6	11.6	16.4	11.6	16.3	8.9	4.5	2.3
16	15.1	15.1	21.4	15.1	21.3	11.6	5.9	3.0
18	19.1	19.1	27.0	19.1	27.0	14.6	7.5	3.8
20	23.6	23.6	33.3	23.6	33.3	18.1	9.2	4.7
24	34.0	34.0	48.0	34.0	48.0	26.0	13.3	6.7

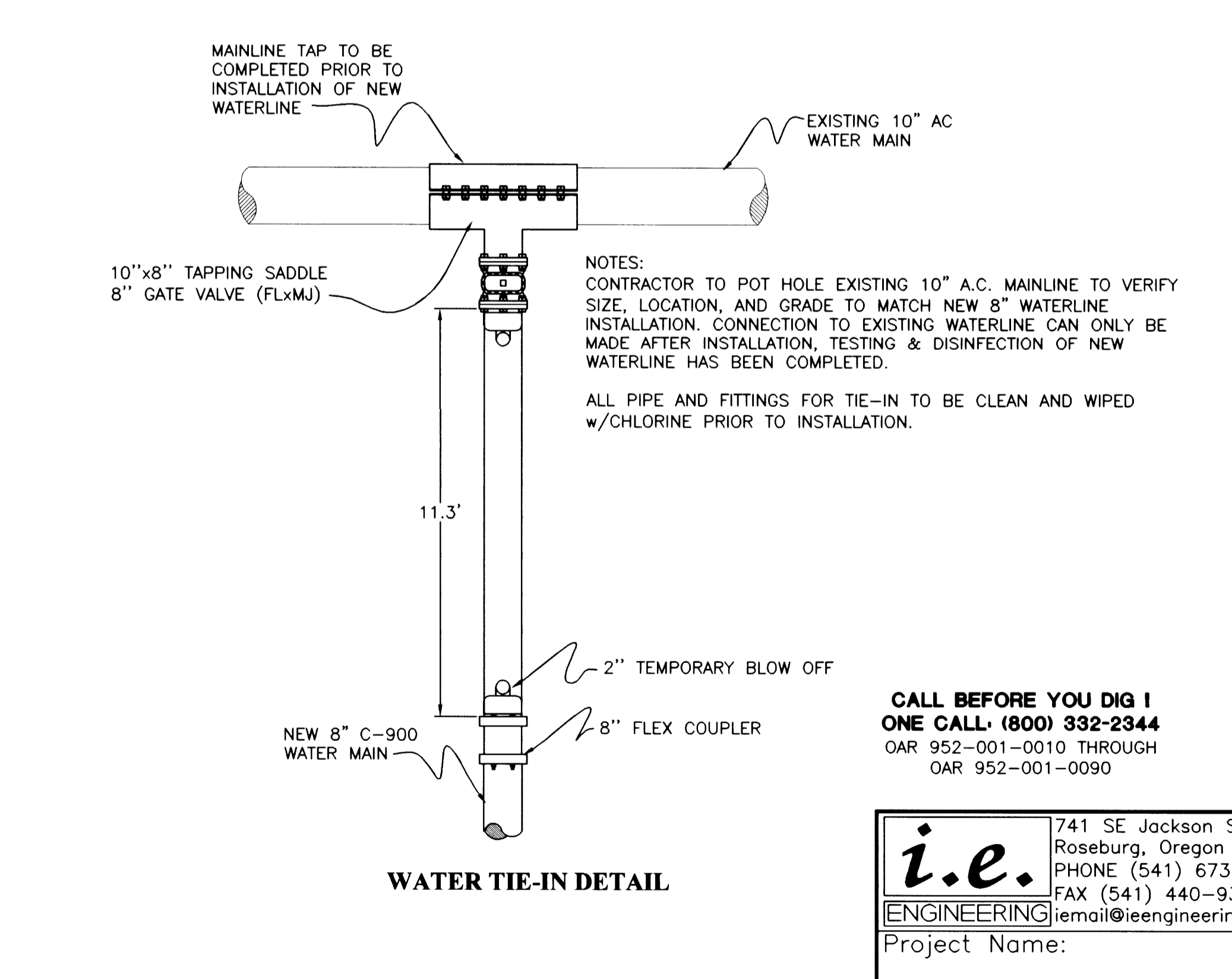


- NOTES:
1. CONCRETE BLOCKING TO BE POURED AGAINST UNDISTURBED EARTH.
 2. ALL CONCRETE TO BE CLASS 3000 MINIMUM.
 3. INSTALL 6 MIL PLASTIC BETWEEN PIPE AND/OR FITTINGS BEFORE POURING CONCRETE BLOCKING.
 4. CONCRETE SHALL BE KEPT CLEAR OF ALL JOINTS AND ACCESSORIES.
 5. THE RODS SHALL BE DEFORMED GALVANIZED COLD ROLLED STEEL, 40000 PSI TENSILE STRENGTH (ASTM A615) COAT WITH COAL TAR EPOXY AFTER INSTALLATION.
 6. BEARING AREA REQ'D AT REDUCERS IS THE DIFFERENCE BETWEEN VALUES FOR DEAD END FOR EACH END SIZE (IE 6x8 = 3.8-2.1 = 1.7 SF.)

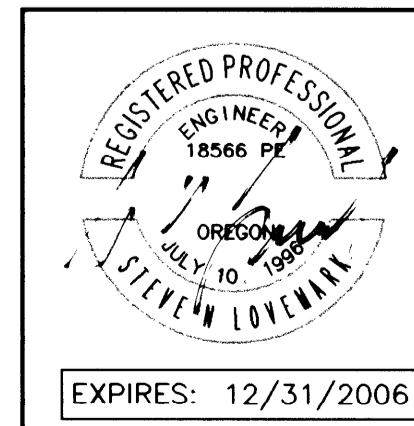
Tri City Water District
 215 N. Old Pacific Highway
 Myrtle Creek, Oregon 97457
 541.863.5276

CONCRETE THRUST BLOCKING STANDARD DETAILS

DETAIL NO. W-700
 10/27/03



WATER TIE-IN DETAIL



Rev.	Date	Dwg	Description
1	8/2/05	ANV	AGENCY REVIEW
2	12/13/05	JDL	AS-BUILT

CALL BEFORE YOU DIG I
ONE CALL (800) 332-2344
 OAR 952-001-0010 THROUGH
 OAR 952-001-0090

i.e. ENGINEERING
 Project Name: ERVIN ESTATES

Title: STANDARD DETAILS

DES JPM PROJECT NO. 1978-01
 DWG ANV DATE: MAY 17, 2005
 CHK SNL SCALE: NONE
 APP SNL SHEET: 4 OF 6

DO NOT DUPLICATE