

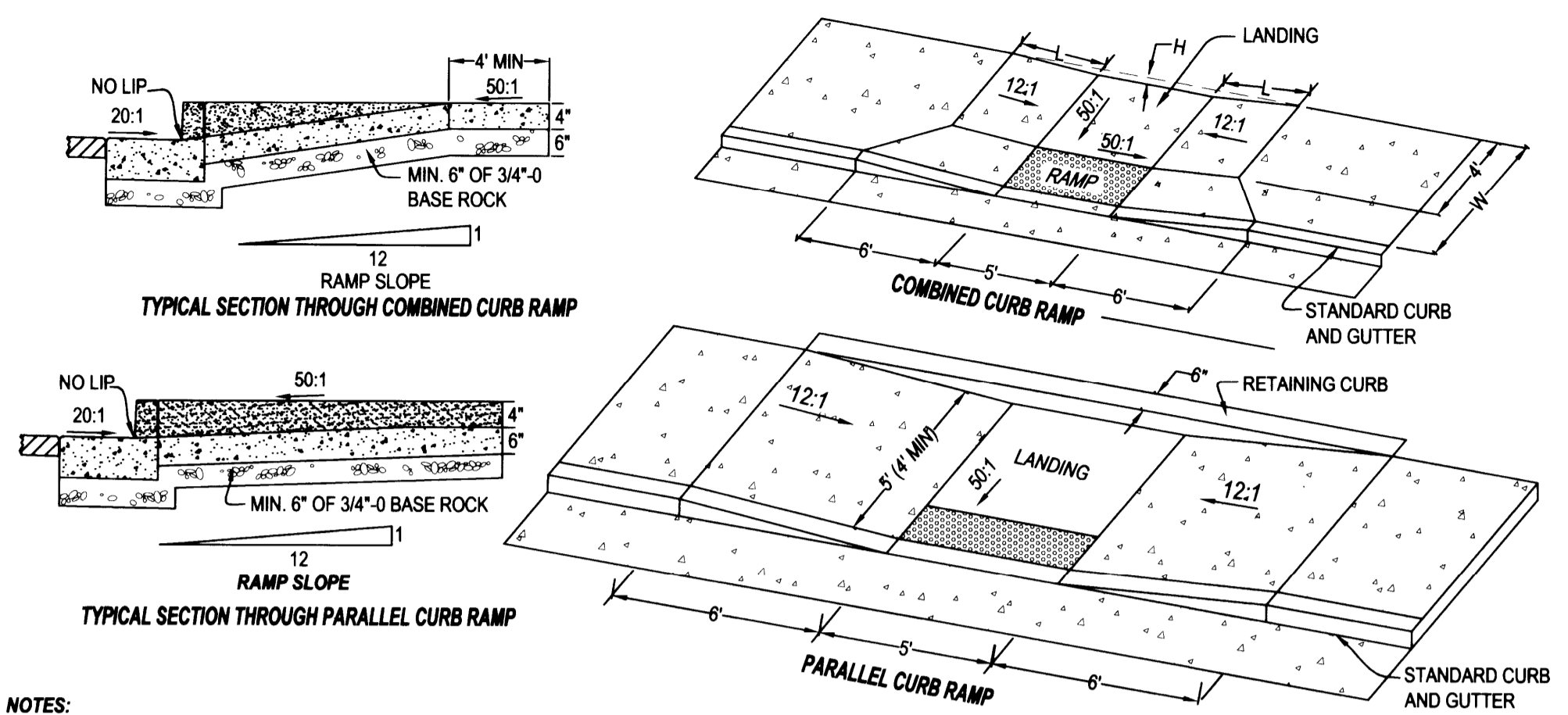
**MAP Engineering, Inc.**  
 741 SE JACKSON STREET  
 ROSEBURG, OREGON 97470  
 PHONE: (541) 229-0365 FAX: (541) 229-0353  
 EMAIL: info@mapengineeringinc.com

**KYLEE ESTATES  
 ASBUILT DRAWINGS**

PROJECT NAME: \_\_\_\_\_  
 DRAWING TITLE: \_\_\_\_\_  
 PROJECT NO.: 2005-01  
 DATE: 05/07/2007  
 DESIGNER: JCB  
 DRAFTER: JCB  
 APPROVAL: MAP

REVISION # BY DATE

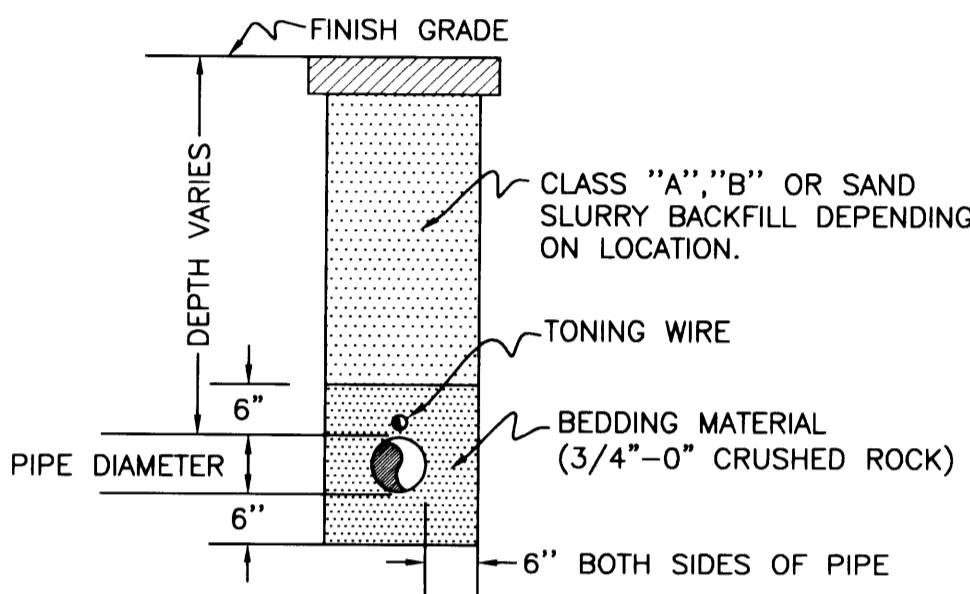
SHEET: 5 OF 8



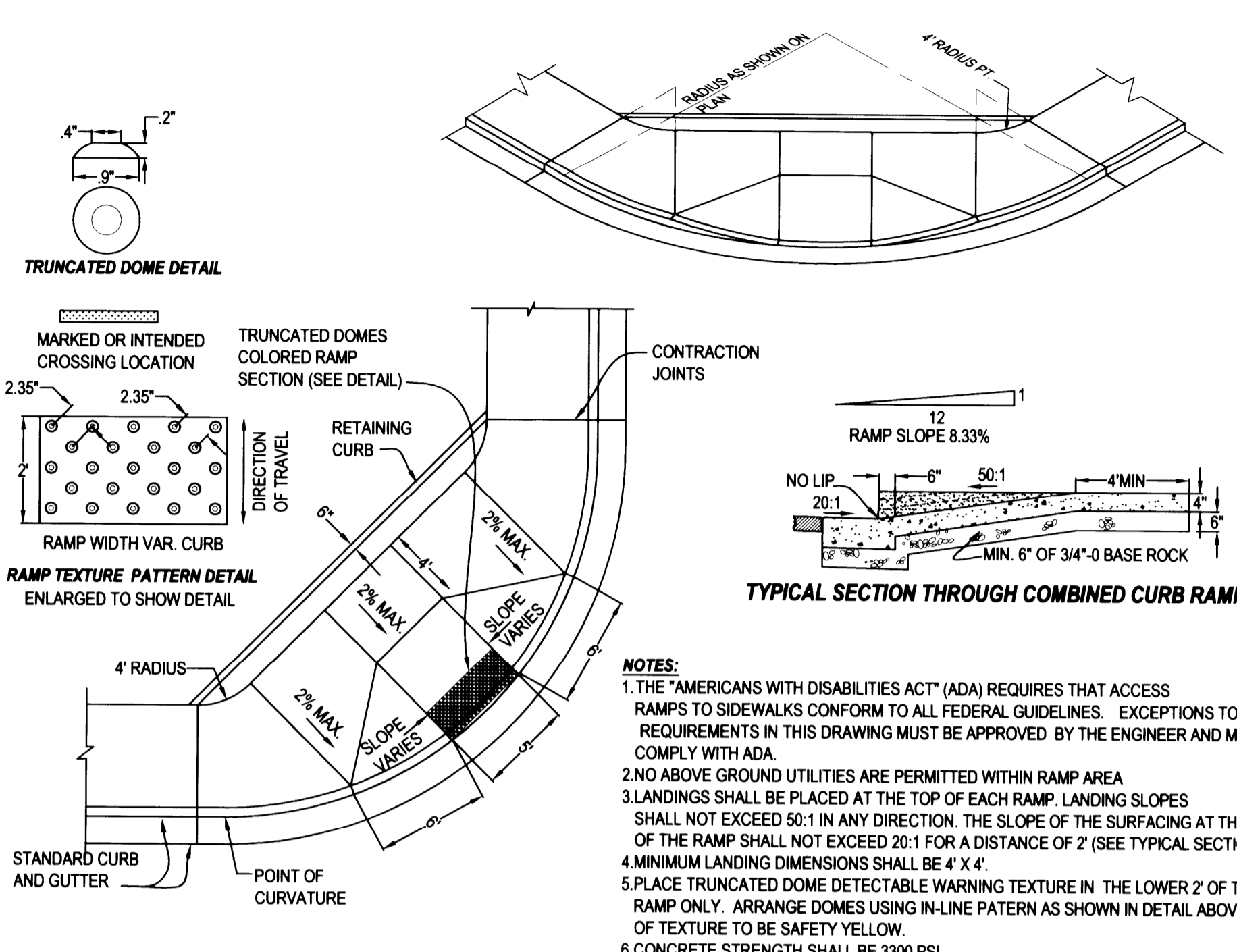
- NOTES:**
1. THE "AMERICANS WITH DISABILITIES ACT" (ADA) REQUIRES THAT ACCESS RAMPS TO SIDEWALKS CONFORM TO ALL FEDERAL GUIDELINES. EXCEPTIONS TO THE REQUIREMENTS IN THIS DRAWING MUST BE APPROVED BY PUBLIC WORKS DIRECTOR AND MUST COMPLY WITH ADA.
  2. LANDINGS SHALL BE PLACED AT THE TOP OF EACH RAMP. LANDING SLOPES SHALL NOT EXCEED 50:1 IN ANY DIRECTION.
  3. MINIMUM LANDING DIMENSIONS SHALL BE 4' X 4'.
  4. PLACE TRUNCATED DOME DETECTABLE WARNING TEXTURE IN THE LOWER 2" OF THROAT OF RAMP ONLY. ARRANGE DOMES USING IN-LINE PATTERN AS SHOWN IN DETAIL ABOVE. COLOR OF TEXTURE TO BE SAFETY YELLOW.
  5. CONCRETE STRENGTH SHALL BE 3300 PSI.

W	L	H
5'	4.36'	7/16"
5.5'	4.05'	13/32"
6'	3.73'	3/8"
6.5'	3.41'	1/32"
7'	3.10'	5/16"
7.5'	2.78'	9/32"
8'	2.46'	1/4"
8.5'	2.15'	7/32"
9'	1.83'	3/16"
9.5'	1.51'	5/32"
10'	1.20'	1/8"
10.5'	0.78'	3/32"

**SIDEWALK ACCESS RAMP**  
 ADA STANDARD-SINGLE MIDBLOCK RAMP

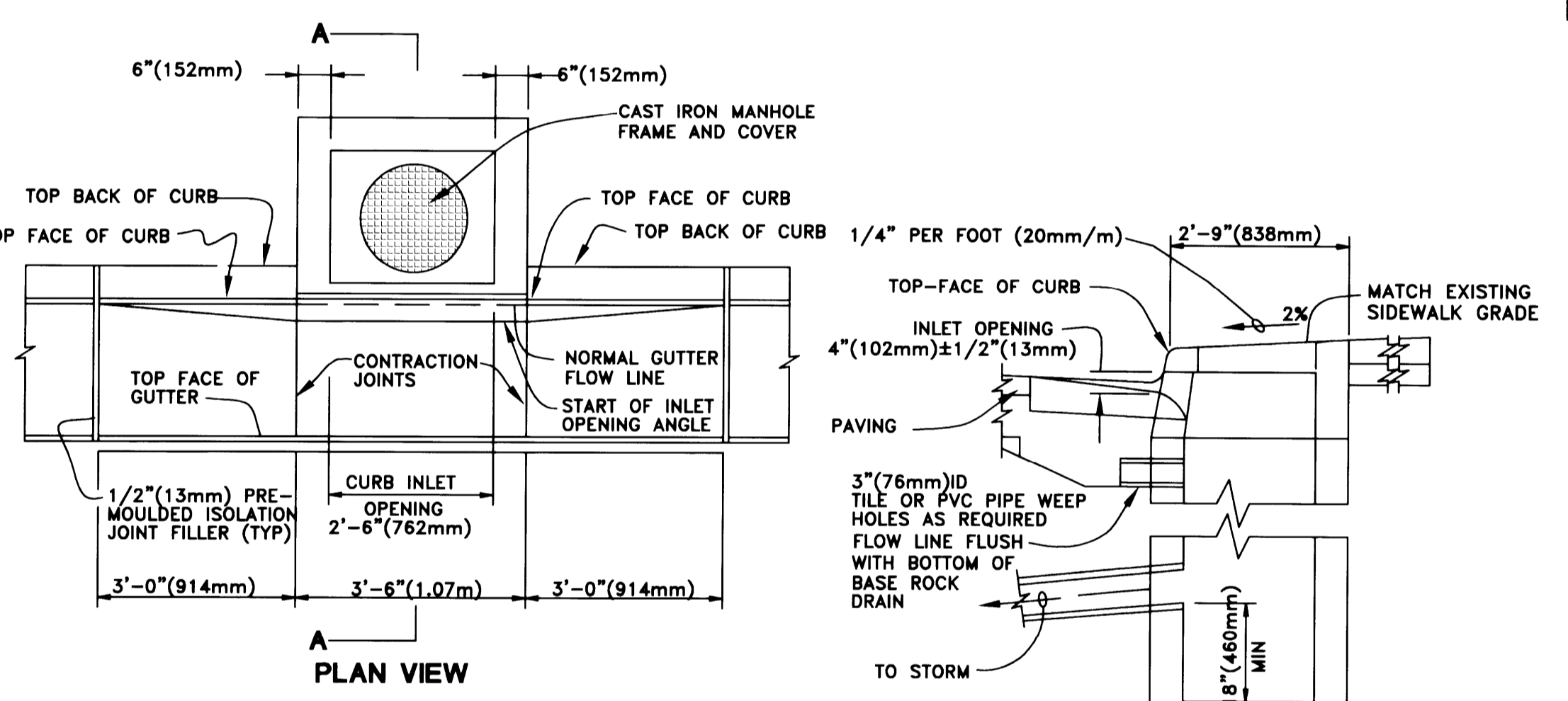


**TYPICAL STORM LINE TRENCH DETAIL**



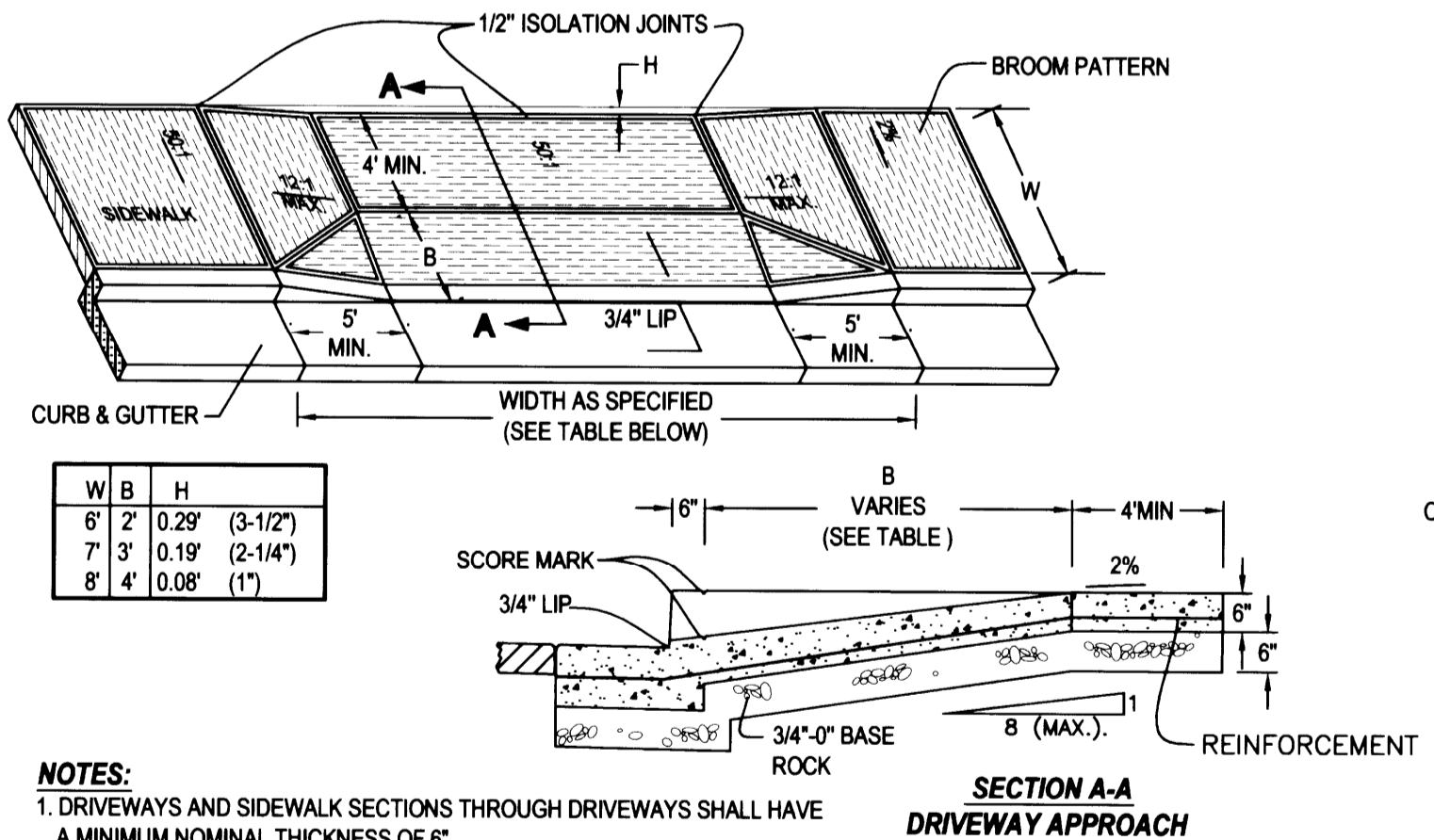
**SIDEWALK ACCESS RAMP**  
 SINGLE CORNER RAMP

- NOTES:**
1. THE "AMERICANS WITH DISABILITIES ACT" (ADA) REQUIRES THAT ACCESS RAMPS TO SIDEWALKS CONFORM TO ALL FEDERAL GUIDELINES. EXCEPTIONS TO THE REQUIREMENTS IN THIS DRAWING MUST BE APPROVED BY THE ENGINEER AND MUST COMPLY WITH ADA.
  2. NO ABOVE GROUND UTILITIES ARE PERMITTED WITHIN RAMP AREA.
  3. LANDINGS SHALL BE PLACED AT THE TOP OF EACH RAMP. LANDING SLOPES SHALL NOT EXCEED 50:1 IN ANY DIRECTION. THE SLOPE OF THE SURFACING AT THE BOTTOM OF THE RAMP SHALL NOT EXCEED 20:1 FOR A DISTANCE OF 2' (SEE TYPICAL SECTION ABOVE).
  4. MINIMUM LANDING DIMENSIONS SHALL BE 4' X 4'.
  5. PLACE TRUNCATED DOME DETECTABLE WARNING TEXTURE IN THE LOWER 2" OF THROAT OF RAMP ONLY. ARRANGE DOMES USING IN-LINE PATTERN AS SHOWN IN DETAIL ABOVE. COLOR OF TEXTURE TO BE SAFETY YELLOW.
  6. CONCRETE STRENGTH SHALL BE 3300 PSI.



**TYPICAL CURB INLET DETAIL**

- NOTES:**
1. ALL FABRICATED METAL PARTS SHALL BE HOT-DIPPED GALVANIZED AFTER FABRICATION EXCEPT MH FRAME AND COVER.
  2. CONCRETE SHALL MEET CITY STANDARD SPEC. FOR STREET CONSTRUCTION STRUCTURES. (3300 PSI, 22.75MPa)
  3. FOR STEEP GRADES USE STD. PRECAST INLET WITH 4'-0" (102mm) OPENING OR TWO 2'-6" (762mm) OPENING INLETS.
  4. CURB INLET BASE MAY BE PRECAST OR CAST-IN-PLACE.

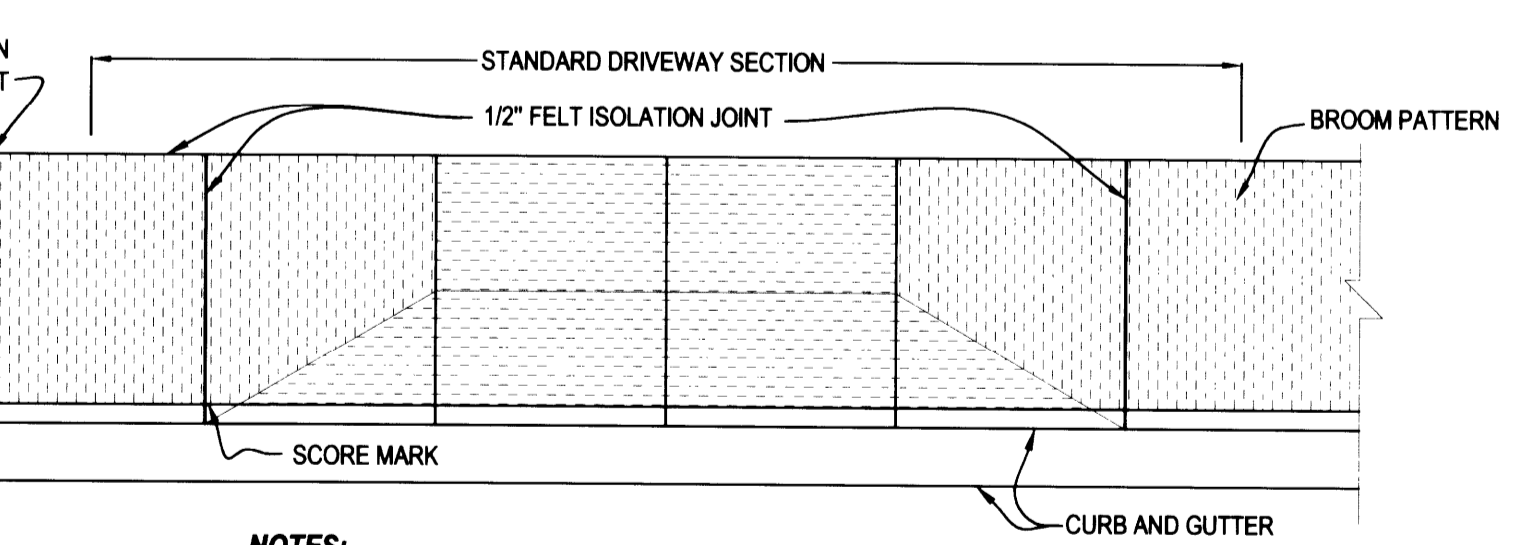
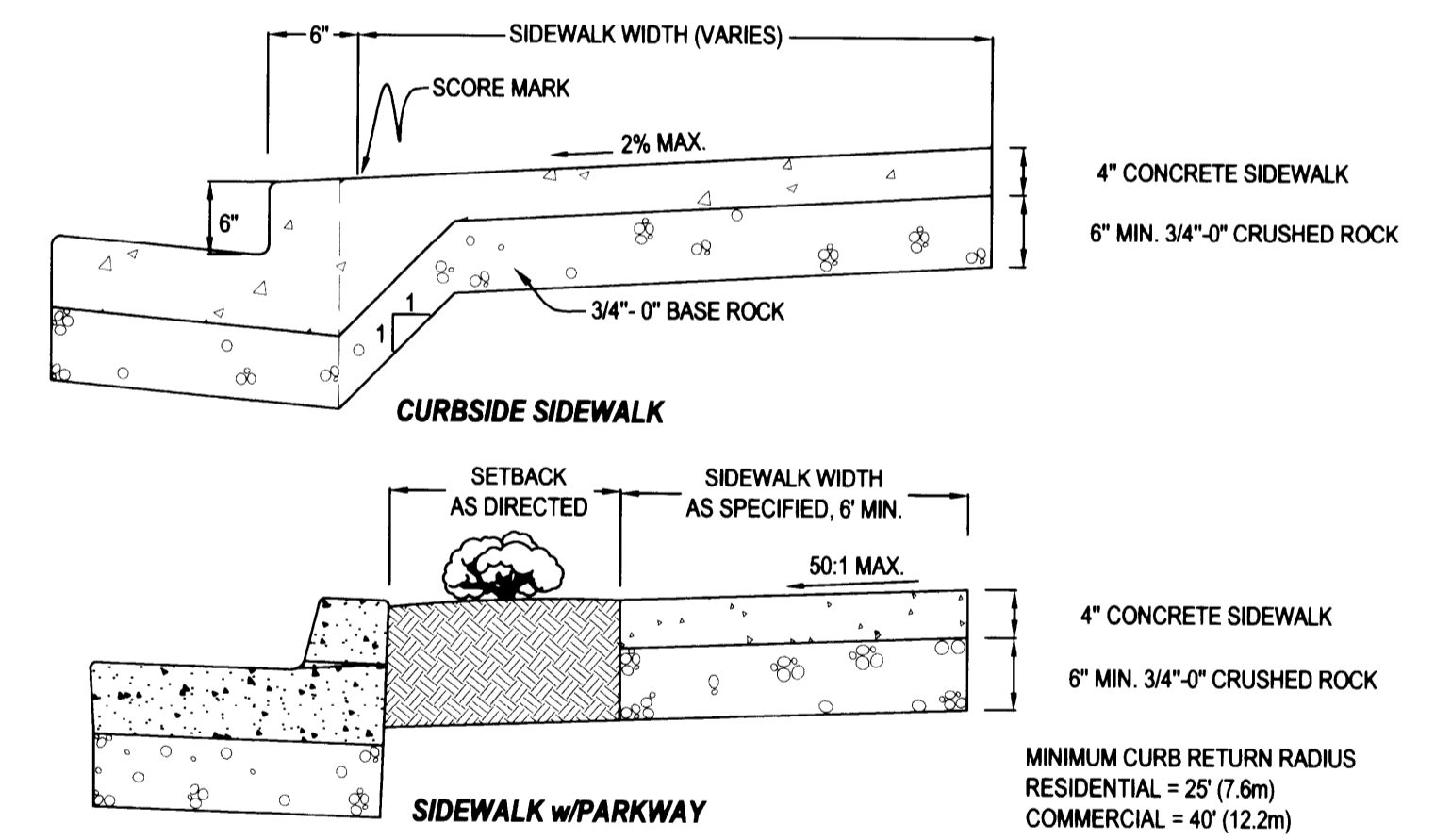


**MONOLITHIC DRIVEWAY APPROACH**

- NOTES:**
1. DRIVEWAYS AND SIDEWALK SECTIONS THROUGH DRIVEWAYS SHALL HAVE A MINIMUM NOMINAL THICKNESS OF 6".
  2. CONCRETE FOR COMMERCIAL USE AND ALLEY APPROACHES SHALL HAVE A MINIMUM ULTIMATE COMPRESSIVE STRENGTH OF 4,000 PSI. OTHER DRIVEWAYS SHALL MEET STANDARD SPECIFICATION FOR NON STRUCTURAL CONCRETE OF 3300 PSI.
  3. CURB TRANSITIONS FOR DRIVEWAY APPROACHES SHALL BE 5 FEET.
  4. REINFORCEMENT SHALL BE #4, GRADE 60 REBAR. REBAR SHALL BE PLACED 12" O.C. EACH WAY.
  5. IN SOME AREAS, 2" (50mm) OF SAND MAY BE USED AS BASE w/WITTEN APPROVAL OF CITY PUBLIC WORKS DEPARTMENT.
  6. 2% SLOPE (50:1) EQUALS 1/4" PER FOOT OR 20mm/m. 12.5% SLOPE (8:1) EQUALS 1 1/2" PER FOOT OR 125mm/m.
  7. THE 50:1 CROSS-SLOPE OF SIDEWALK IS MEASURED FROM HORIZONTAL. THE 12:1 SLOPE OF SIDEWALK TRANSITION TO DRIVEWAY/ALLEY IS RELATIVE TO THE RUNNING SLOPE OF THE APRON IS MEASURED RELATIVE TO HORIZONTAL.

**ALLOWABLE CURB CUT WIDTHS**

PROPERTY	MAX. WIDTH	MIN. WIDTH	MAX. % OF FRONTAGE
RESIDENTIAL	32'(10m)	22'(6.7m)	40%
PROFESSIONAL	32'(10m)	22'(6.7m)	50%
COMMERCIAL	32'(10m)	22'(6.7m)	80%
INDUSTRIAL	49'(15m)	22'(6.7m)	50%



- NOTES:**
1. CONCRETE USED IN SIDEWALKS SHALL HAVE A 28 DAY ULTIMATE COMPRESSIVE STRENGTH OF 3,300 PSI.
  2. ALL RADI SHALL BE 3/4" (20mm) UNLESS OTHERWISE SHOWN.
  3. ISOLATION JOINTS (FELT EXPANSION JOINTS) SHALL BE PLACED AT 45' INTERVALS.
  4. CONTRACTION JOINTS SHALL BE PLACED AT 15' (4.5m) INTERVALS AND SHALL EXTEND THROUGH THE CURB OR CURB & GUTTER EVERY OTHER ONE.
  5. 3" (76mm) DIAMETER WEEPHOLES ARE REQUIRED FROM BACK OF SIDEWALK TO FACE OF CURB AT ALL DOWNSPOUTS, DRAINS OR TWO PER LOT. A CONTRACTION JOINT SHALL BE PLACED OVER AND ALONG EACH WEEP HOLE.
  6. SIDEWALK ACCESS RAMPS ARE REQUIRED AT ALL STREET CORNERS AND AS OTHERWISE DIRECTED.

**SIDEWALK STANDARDS**