

**MAP Engineering, Inc.**

741 SE JACKSON STREET  
 ROSEBURG, OREGON 97470  
 PHONE: (541) 229-0365 FAX: (541) 229-0353  
 EMAIL: info@mapengineeringinc.com

**KYLEE ESTATES  
 ASBUILT PLANS**

**OVERALL SITE**

REVISION #	DATE	BY	PROJECT NAME

SHEET: 2 OF 8

CALL BEFORE YOU DIG!  
 ONE CALL: (800) 332-2344  
 OAR 952-001-0010 THROUGH  
 OAR 952-001-0090

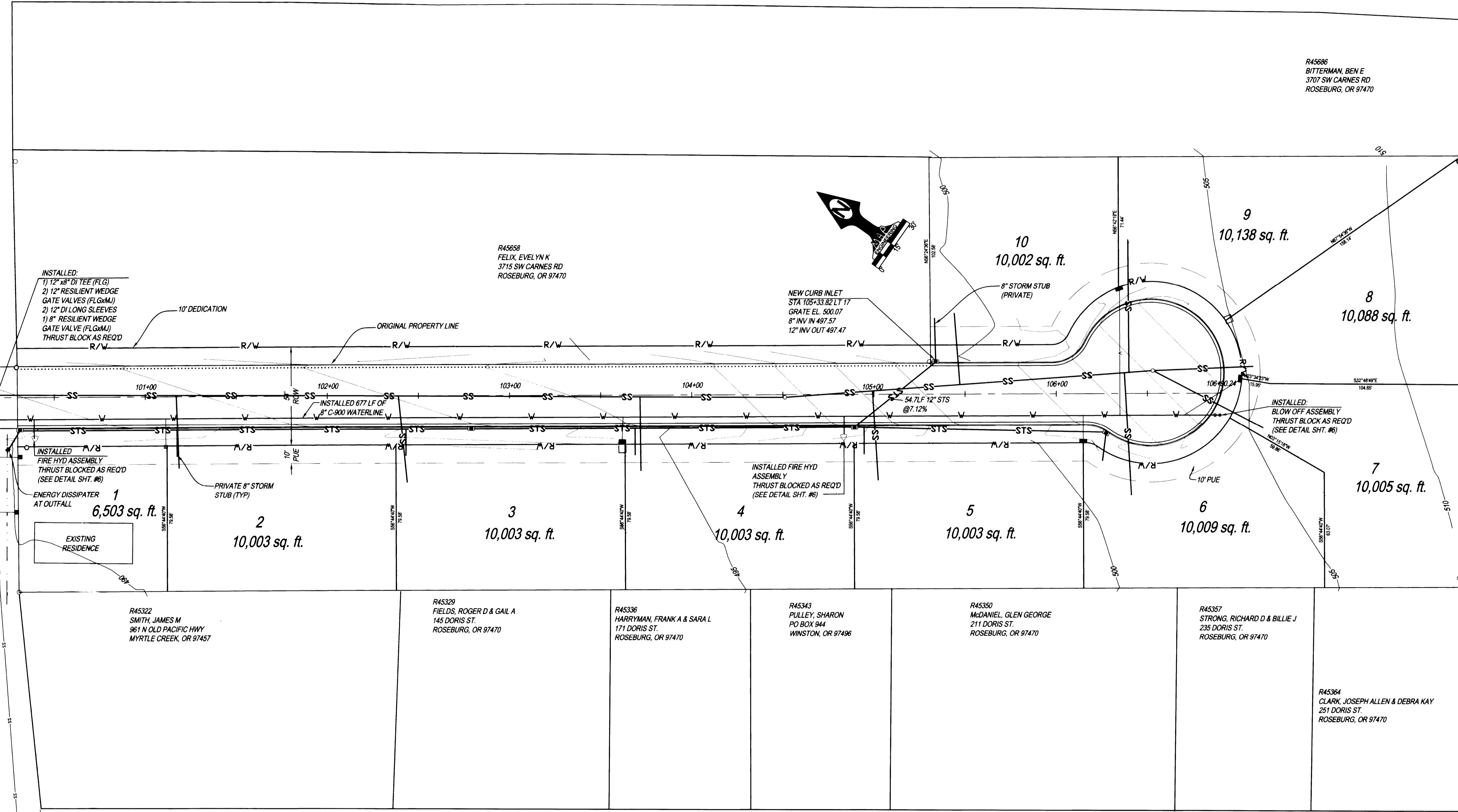
CARNES RD (CO. RD. # 16)

EX SS MH # E-5  
 STA 10+45  
 RIM EL. 491.46  
 8" INV. IN 485.07 (N)  
 8" INV. IN 485.04 (E)  
 8" INV. OUT 485.03 (S)

INSTALLED:  
 1) 12" x 8" DI TEE (FLG)  
 2) 12" RESILIENT WEDGE  
 GATE VALVES (FLGMJ)  
 2) 12" DI LONG SLEEVES  
 1) 8" RESILIENT WEDGE  
 GATE VALVE (FLGMJ)  
 THRUST BLOCK AS REQ'D  
 R/W

INSTALLED:  
 FIRE HYD ASSEMBLY  
 THRUST BLOCKED AS REQ'D  
 (SEE DETAIL SHT. #6)  
 ENERGY DISSIPATER  
 AT OUTFALL  
 1  
 6,503 sq. ft.

EX SS MH # E-3  
 STA 4+68.25  
 RIM EL. 484.30  
 8" INV. IN 477.75 (N)  
 8" INV. IN 477.73 (E)  
 8" INV. OUT 477.63 (S)



EXPIRATION DATE: 12/31/08

DESIGNER: JCB DRAFTER: JCB APPROVAL: MAP

DATE: 05/07/2007

DWG SCALE: 1" = 30'

PROJECT NO.: 2065-01